

**SUPPLIER OF NURSERY AND  
WETLAND STOCK TO THE TRADE**



**WE CARRY A FULL LINE OF**

- NATIVES                      ➤ SHRUBS
- ORNAMENTALS           ➤ PERENNIALS
- GROUNDCOVERS        ➤ VINES
- SHADE & ORNAMENTAL TREES
- WOODY & HERBACEOUS WETLAND PLANTS

**CONTRACT GROWING AVAILABLE**

*CALL FOR SAMPLES OR QUOTES OF  
WETLAND & EROSION CONTROL FABRICS*

**24 BUZZELL ROAD  
BIDDEFORD ME 04005**

*phone (207) 499-2994      (207) 282-7235*

*fax (207) 499-2912*

*e-mail: [sales@piersonnurseries.com](mailto:sales@piersonnurseries.com)*

**CALL OR WRITE FOR OUR CATALOG**



**42<sup>ND</sup> YEAR IN BUSINESS**

*Need top quality site and purpose adapted seed  
specifically selected to meet the requirements of  
your seeding project this fall?*

*Stevenson Intermountain Seed Inc. has you covered  
with over 450 species and varieties of grass, forb,  
wildflower, legume, and shrub seed in stock and  
ready for delivery. With this broad base of species,  
varieties and local origins, we can genetically select  
those that will be the best match for your project.*

*All accompanied by great prices; professional,  
knowledgeable assistance, and 42 years of  
reputable experience.*

Contact us by phone at 435-283-6639, email at [sales@siseed.com](mailto:sales@siseed.com) or mail at  
Stevenson Intermountain Seed Inc., P.O. Box 2, Ephraim, UT 84627

Please check out our website at [WWW.SISEED.COM](http://WWW.SISEED.COM)

# ALPHA NURSERIES, INC.



Species	Size	Type	Price per 1000
Spicebush	12-18"	Seedlings	\$590.00
White Spruce	20-30"	Transplants	\$850.00
Silver Maple	18-24"	Seedlings	\$610.00
Black Walnut	18-24"	Seedlings	\$660.00
Silky Dogwood	18-24"	Seedlings	\$660.00
Tulip Poplar	18-24"	Seedlings	\$710.00
Swamp White Oak	12-18"	Seedlings	\$580.00
White Pine	7-10"	Seedlings	\$240.00
Norway Spruce	16-24"	Transplants	\$805.00

***Contact us today for complete seedling list!***

3737 65th St. • Holland, MI 49423

269-857-7804 • Fax 269-857-8162 • Email: [info@alpha nurseries.com](mailto:info@alpha nurseries.com)

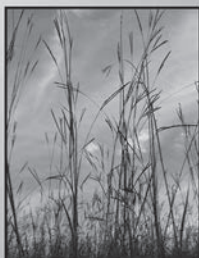
**[www.alphanurseries.com](http://www.alphanurseries.com)**



## SHOOTING STAR NATIVE SEEDS

Native Seed for CRP, CREP, DOT,  
BWSR, & Custom Native Mixes

Wholesale & Retail



20740 County Road 33 • Spring Grove, MN 55974

phone: 507.498.3944

info@ssns.co • www.ssns.co

## Restoring the native balance



ernstseed.com

sales@ernstseed.com

800-873-3321

# Genesis Nursery, Inc.



## Wholesale Midwest Native Seeds & Plants

Send us your custom seed mix  
via fax or email.

info@genesisenurseryinc.com

Toll Free: 877-817-5325

Fax: 815-438-2222

23200 Hurd Road ~ Tampico, IL  
61283

~Native Grasses, Sedges, Wildflowers & Wetland Shrubs.

~Seeds & plants for natural landscaping, wildlife habitat, reclama-  
tion, roadsides & streambank stabilization.

~Upper Midwest regional seed mixes based on local eco-  
systems. IDOT & Illinois Tollway native mixes & custom mixes  
available.

~Local ecotype & regionally adapted seed.

~Plugs and larger material.-Contract growing available.

*Over 30 years experience in restoring Midwest landscapes.*

~www.genesisenurseryinc.com~

[www.possibilityplace.com](http://www.possibilityplace.com)

Trees  
Shrubs  
Perennials

# Possibility Place Nursery

Purveyor of Native Plant life

**Contract Growing Available**

7548 W Monee Manhattan Road  
Monee, Illinois 60449

**708-534-3988**

Fax: 708-534-6272

## NEW MOON NURSERY



High Quality Plant Material  
for Wetlands, Uplands,  
Storm Water Management,  
Restoration, and Conservation



Herbaceous  
Grasses | Vines | Cultivars  
Grown in Deep Plugs

Compare our Deep Plug  
to the industry standard, we are sure  
you will see the advantages.



888-998-1951 | fax 888-998-1952  
[info@newmoonnursery.com](mailto:info@newmoonnursery.com)

Visit our website today!  
[www.newmoonnursery.com](http://www.newmoonnursery.com)



Get Wild, Grow Native

975 Barretts Run Road,  
Bridgeton, NJ 08302

## Native Trees & Shrubs

- Quality Native Conifers, Shrubs and Hardwoods
- Contract Growing
- Custom Propagation
- Willow & Cottonwood Live Stakes

Providing the conservation and restoration  
community with conservation grade  
seedlings and cuttings since 1993.

## WACD Plant Materials Center

Julie Whitacre, Sales Manager  
Jim Brown, Manager

16564 Bradley Road, Bow, WA 98232  
360-757-1094

[pmcsales@gmx.com](mailto:pmcsales@gmx.com)  
<http://www.wacdpmc.org/>





*Ecological  
restoration  
for a healthy  
relationship  
between nature  
& culture.*

SER is dedicated to promoting ecological restoration as a means of sustaining the diversity of life on Earth and re-establishing an ecologically healthy relationship between nature and culture.

The Society provides great opportunities for its members to network and to advance the science, practice and policy of ecological restoration.

WILD COLUMBINE  
*Aquilegia canadensis*

Visit [SER.org](http://SER.org) or email [info@ser.org](mailto:info@ser.org).



# Prairie Restorations, Inc.

Restoring Native Plant Communities Since 1977



**Prairie Restorations, Inc.**  
31646 128th Street  
Princeton, MN 55371  
800-837-5986  
[www.prairieresto.com](http://www.prairieresto.com)

**Products Including:**

Local Genotype Species  
Seed and Plants  
Trees and Shrubs  
Native Sod Flats  
Seed Mixes

**Services Including:**

Landscape Design and Installation  
Technical and Design Consulting  
Invasive Species Control  
Prescribed burning

## Natural Garden Natives®



Let Us Custom Grow  
Your Next Project.

*Natural Garden Natives® grows over 200 species of natives originating from known populations within a 90 mile genetic range of our production facility in St. Charles, IL.*

[www.midwestgroundcovers.com](http://www.midwestgroundcovers.com)

# NATIVEPLANTS


## JOURNAL

Edited by Stephen Love

ISSN: 1522-8339, e-ISSN: 1548-4785, 3/year

*Native Plants Journal* is a forum for dispersing practical information about planting and growing North American (Canada, Mexico, and U.S.) native plants for conservation, restoration, reforestation, landscaping, highway corridors, and related uses. Subscribers receive online access to all back issues. Volumes one through five are open access and available to all.

<http://npj.uwpress.org>

 THE UNIVERSITY OF WISCONSIN PRESS  
JOURNALS DIVISION

1930 Monroe Street, 3<sup>rd</sup> FL., Madison, WI 53711-2059

[journals@uwpress.wisc.edu](mailto:journals@uwpress.wisc.edu) | Phone: (608) 263-0668

Fax: (608) 263-1173 or (US only) (800) 258-3632

<http://uwpress.wisc.edu/journals>

# Landscape Journal


*The official journal of the Council of Educators in Landscape Architecture (CELA)*

Edited by Brian Lee *University of Kentucky*

ISSN: 0277-2426, e-ISSN: 1553-2704, 2/year

[lj.uwpress.org](http://lj.uwpress.org)

*Landscape Journal* offers in-depth exploration of ideas and challenges that are central to contemporary design, planning, and teaching. In addition to scholarly features, *Landscape Journal* includes editorial columns, creative work, and reviews of books, conferences, technology, and exhibitions.

 THE UNIVERSITY OF WISCONSIN PRESS  
JOURNALS DIVISION

1930 Monroe Street, 3<sup>rd</sup> FL., Madison, WI 53711-2059

[journals@uwpress.wisc.edu](mailto:journals@uwpress.wisc.edu) | (608) 263-0668

Fax: (608) 263-1173 or (US only) (800) 258-3632

[lj.uwpress.org/](http://lj.uwpress.org/)

## If you value *Ecological Restoration*, please let your librarian know!

In this time of tightening budgets, some libraries are not renewing journal subscriptions, unless they hear from **you**. If you find the articles you read in *Ecological Restoration* valuable, please take a moment to tell your library by filling out this library recommendation form, or accessing it online at:

<http://uwpress.wisc.edu/journals/pdfs/lib-form.pdf>

To subscribe visit <http://uwpress.wisc.edu/journals/> or contact your subscription agency.

*Ecological Restoration*

ISSN 1522-4740 • e-ISSN: 1543-4079

4 issues/year

### I recommend that the library subscribe to *Ecological Restoration*.

PROFESSOR \_\_\_\_\_

DEPARTMENT \_\_\_\_\_

DATE \_\_\_\_\_

SIGNATURE \_\_\_\_\_

### Reason for acquisition:

☐ This journal is an essential resource for myself and my colleagues

☐ I refer my students to this journal

☐ I publish or intend to publish articles within this journal

☐ Other \_\_\_\_\_

 THE UNIVERSITY OF WISCONSIN PRESS  
JOURNALS DIVISION

1930 Monroe Street, 3<sup>rd</sup> FL., Madison, WI 53711-2059

[journals@uwpress.wisc.edu](mailto:journals@uwpress.wisc.edu) | Phone: (608) 263-0668

Fax: (608) 263-1173 or (US only) (800) 258-3632

<http://uwpress.wisc.edu/journals/>