

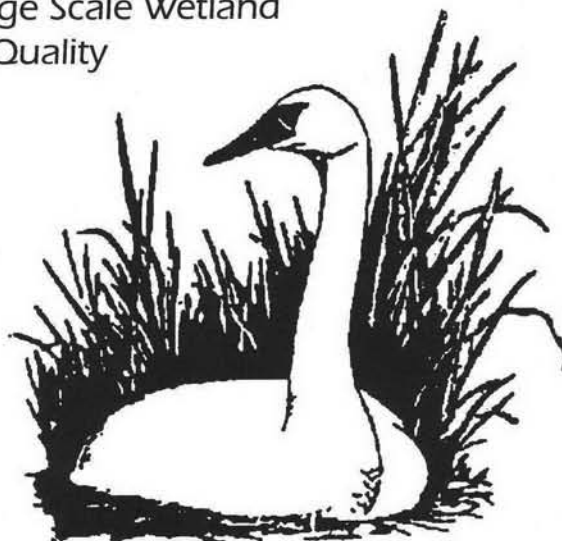
Join The Winning Team at Marshland Transplant

The Largest Wholesale Aquatic Nursery in Wisconsin for
Nursery Propagated Wetland, Woodland & Prairie Plants

Producers of Plant Materials for Large Scale Wetland
Mitigation and Native Restoration Quality

Native Plants for:

- Reclamation Areas
- Reforestation
- Wildlife Habitat
- Wetland Buffers
- Woodland Restoration
- Wastewater Treatment
- Roadside Restoration
- Prairie Restoration



Contract Growing Available

MARSHLAND TRANSPLANT AQUATIC NURSERY

P.O. Box 1 ▪ Berlin, WI 54923

(414) 361-4200 ▪ Fax (24 hours): (414) 361-4200

Join us in rebuilding our environment, call: (800) AQUATIC {208-2842}

Call for Free Wholesale Catalog!

**PLANTING INSTALLATION ▪ LARGEST SELECTION ▪ BEST QUALITY ▪
WHOLESALE PRICES ▪ POTTED & BARE-ROOT MATERIAL**

Marshland Transplant Aquatic Nurseries

A Regional Center for Aquatic Restoration

**Plants for Prairie, Sedge Meadow, &
Emergent Communities**

- PRAIRIE, WETLAND, &
WOODLAND RESTORATION
- CONTRACT GROWING
- PLANT INSTALLATION
- POTTED & BARE-ROOT MATERIAL

Call: 1 (800) AQUATIC (208-2842)

Office (414) 361-4200 ▪ Fax (24 Hours) (414) 361-4200
P.O. Box 1 ▪ Berlin, WI 54923

Seeds for Wetland and Prairie from ION Exchange

Along with our own large selection of native seed and prairie plants,
ION Exchange will also be your supplier of quality wetland and prairie
seed from Marshland Transplant

ION EXCHANGE

1878 Old Mission Drive

Harpers Ferry, Iowa 52146-7533

(319) 535-7231 • (800) 291-2143 • Fax: (319) 535-7362

Visit our Web Page on the Internet: <http://www.ionxchange.com>

E Mail: hbright@harpersferry.polaristel.net

Habitat Planters



truax COMPANY, INC.

3609 Vera Cruz Ave. • Minneapolis, MN 55422 • (612) 537-6639

- *native grass & wildflower planters*
- *no-till interseeders*
- *tree seed planters*

Designers and Manufacturers of the TRUAX NATIVE GRASS DRILL

Louis Berger & Associates, Inc.



Environmental and Engineering Consultants Since 1953

*"American Consulting Engineers Council
National Excellence Award Winner-
Wetland Design"*

- ★ Environmental Impact Studies
- ★ Wetland Design and Restoration
- ★ Landscape Specification
- ★ Habitat Management Plan
- ★ Endangered Species Surveys
- ★ Aquatic Ecology Studies

**For more information or a brochure please
contact: Mark Renna 201-678-1960 ext. 485**

Headquarters: 100 Halsted Street, East Orange, NJ 07019

Offices in: Arizona, Connecticut, District of Columbia, Illinois, Iowa, Louisiana, Maryland, Massachusetts, Mississippi, Nevada, New York, New Mexico, North Carolina, Pennsylvania, Rhode Island, Virginia, Washington, West Virginia

PLATEAUTM

herbicide



“WHEN NATURE CALLS”

For Native Prairie Establishment, Release and Maintenance

NATIVE PRAIRIEGRASSES

- ♣ Big Bluestem
- ♣ Indiangrass
- ♣ Little Bluestem
- ♣ Sideoats Grama
- ♣ Blue Grama

FORBS

- ♣ Partridge Pea
- ♣ Illinois Bundleflower
- ♣ Black-eyed Susan
- ♣ Purple Coneflower
- ♣ Purple Prairie Clover
- ♣ Lespedeza . . . and more

See label for correct timing, rate and additional tolerant species.

Controls over 70 weeds that compete with seedling prairiegrass Including:

- | | | |
|-----------------|--------------|-----------------|
| √ foxtails | √ velvetleaf | √ pigweed |
| √ crabgrass | √ smartweed | √ lambsquarter |
| √ barnyardgrass | √ ragweed | √ nutsedge |
| √ johnsongrass | √ cocklebur | . . . plus more |

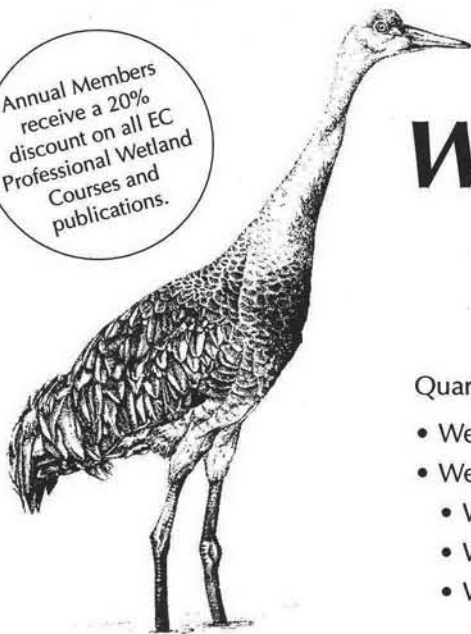
See label for specific rates and timings.

For additional information or to purchase PLATEAU herbicide contact:

Randy Lusher
Senior Vegetation Specialist
5430 Washington Street
Downers Grove, IL 60515
(630) 810-1832

Joe Vollmer
Senior Market Develop. Specialist
P.O. Box 577
669 Core Road
Frankfort, OH 45628
(614) 998-8672

Annual Members
receive a 20%
discount on all EC
Professional Wetland
Courses and
publications.



Wetland Journal

RESEARCH, RESTORATION, AND EDUCATION

ANNUAL MEMBERSHIP

Quarterly issues featuring:

- Wetlands Education
- Wetlands Issues, including
 - Wetlands Resources
 - Wetlands Dynamics
 - Wetlands Soils
- Restoration Techniques
- The Do's & Don'ts of Wetland Planning
- Horticulture & Research
- Wetlands Book Reviews

Visit our home-page on the web for wetlands articles, "The Do's and Don'ts of Wetland Planning" (included in each issue of the *Wetland Journal*), the EC nursery catalog, publications, Professional Wetlands Courses, and more!

[www: http://www.bluecrab.org/econcern/ec.html](http://www.bluecrab.org/econcern/ec.html)

Send us your comments, questions, suggestions, and orders:

e-mail: econcern@skipjack.bluecrab.org

ENVIRONMENTAL CONCERN INC., P.O. BOX P ST. MICHAELS, MD 21663 (410) 745-9620 (410) 745-3517 FAX

Books by Mail

Conservation Biology Quantitative Ecology Natural History

- Free catalogue subscription
- Five catalogues each year
- New and forthcoming books
- Over 800 books from over 200 publishers in each
- Helpful, knowledgeable staff

Visit us on the web:

<http://www.omicron.com/inforium/ledlie/>



Patricia Ledlie Bookseller, Inc.

One Bean Road, Post Office Box 90
Buckfield, Maine 04220
Phone/Fax (207) 336-2778
email: ledlie@maine.com

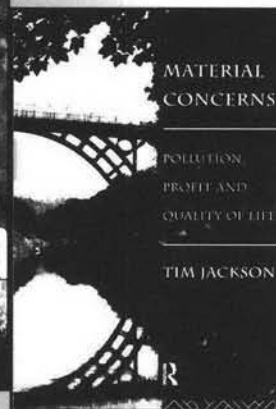
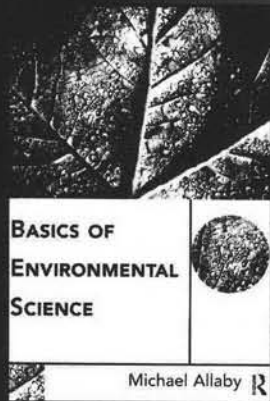
Prairie Restorations, Inc.

- Reconstructions modeled after natural plant communities.
- Planning, specification writing, materials, construction services, management and management planning.
- We strive for excellence and authenticity in our projects.



For further information
please write or call:

Prairie Restorations, Inc.
P.O. Box 327
Princeton, Minnesota 55371
(612)-389-4342



Basics of Environmental Science

Michael Allaby

A wide range of environmental concerns are addressed—from climate change and the greenhouse effect to soil erosion, pollution, biodiversity, and human population growth.

312 pp 120 illus \$17.95/pb

Green Backlash

Global Subversion of the Environment Movement

Andrew Rowell

Green Backlash is a controversial exposé of the anti-environmental movement which is now gathering steam around the globe.

504 pp 15 b/w illus \$18.95/pb

Ecology and Equity

The Use and Abuse of Nature in Contemporary India

Madhav Gadgil and Ramachandra Guha

Ecology and Equity presents a provocative interpretation of the environment debate in a large, diverse and vitally important Third World country.

224 pp 31 illus \$19.95/pb

Just Environments

Intergenerational, International and Inter-Species Issues

Edited by Joy Palmer and David Cooper

This is a multi-disciplinary examination of the international, intergenerational, inter-species issues arising from our treatment of the environment. The contributors consider our obligations to future generations, to the developing world, and to the sub-human species respectively.

208 pp \$16.95/pb

**Prices subject to change.*

Material Concerns

Pollution Profit and Quality of Life

Tim Jackson

Jackson offers the first non-technical introduction to preventative environmental management.

240 pp 33 illus \$17.95/pb

Modern Environmentalism

An Introduction

David Pepper

Examining key environmental ideas within their social and historical context, Pepper outlines contemporary environmentalist approaches to valuing nature, economics, third world development, technology, ecofeminism and social change.

384 pp 34 illus \$22.95/pb

The Spirit of the Soil

Agriculture and Environmental Ethics

Paul B. Thompson

Challenges environmentalists to think more deeply about the ethical dimensions of agriculture's impact on the environment.

Thompson considers environmental problems in industrial agriculture, such as the use of chemical pesticides and biotechnology.

144 pp \$14.95/pb

Geocology

An Evolutionary Approach

Richard John Huggett

Based on a new, "evolutionary" view of geocological systems, and the animals, plants and soils comprising them,

Geocology investigates the structure and function of geoecosystems.

352 pp 123 illus \$24.95/pb



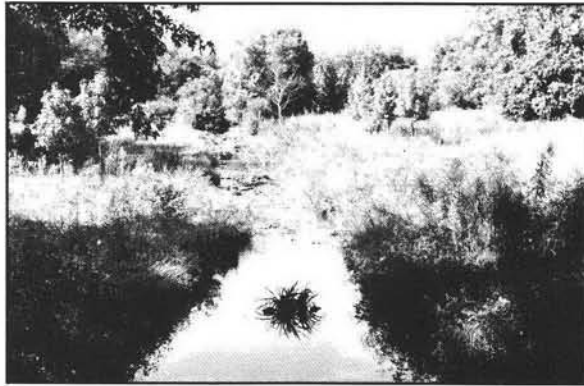


Effective, Ecological, Smart Erosion Control

Nature's own products for streambank stabilization, shoreline protection and habitat improvement

Let plants do all the work for you.

Creative Habitat Corporation sells the successful FIBER SCHINE™ System of Coir-based products used in erosion control. For more information about erosion control blankets, pillows & logs, call:



Creative Habitat
Corporation



914-948-4389
253 Old Tarrytown Road, White Plains, NY 10603

JJR/

JJR/inc has 30 years of experience and 30 professionals who can provide environmental impact statements, wetland mapping and habitat mitigation and restoration. If you would like to discuss your project with an environmental specialist, please call the nearest **JJR/inc** office listed below.

110 Miller
Ann Arbor, Michigan 48104
313 662 4457
313 662 7520 fax

30 West Monroe, Suite 1010
Chicago, Illinois 60603-2405
312 641 0770
312 641 6728 fax

One North Pinckney Street
Madison, Wisconsin 53703
608 251 1177
608 251 6147 fax

"If there is a 'bottom line' for this book, it might be this: species is not an adequate concept for organizing conservation management; levels below (metapopulations and genomes) and above (ecosystems and landscapes) must also be considered."

—from the Introduction by Olin E. Rhodes, Jr., and Eugene P. Odum

Population Dynamics in Ecological Space and Time

EDITED BY

OLIN E. RHODES, JR., RONALD K. CHESSER,
AND MICHAEL H. SMITH

"This book lays the foundations for a new ecology in which spatial and temporal variation are seen as primary features, and where they are treated as focal concepts for understanding the persistence of biodiversity. This book will therefore play an important role in redirecting the research framework of ecology in directions that bring it closer to our intuition about how the living world is structured."—Janis Antonovics, Duke University

Paper \$17.95 396 pages 2 halftones, 48 line drawings, 13 tables

Cloth edition available

The University of Chicago Press

5801 South Ellis Avenue, Chicago, Illinois 60637

Visit us at <http://www.press.uchicago.edu>



Varietal Verification
and Hybrid Purity Assays

Electrophoresis Testing Available

Fast *Same Day Results Available*

Economical *Up to 104 Samples Per Gel*

Flexible *Custom Procedures to Meet Your Needs*

Reliable *25 Years of Electrophoretic Experience*

Run HyPure precast
gels in your lab or
Send your samples
to us.

For more information,
please call Isolab's
Technical Service:

(330) 825-4525

(800) 321-9632

(330) 825-8520
TELEFAX

ISOLAB

Isolab Inc.
Drawer 4350
Akron, Ohio USA
44321

THE S/E GROUP

Professional Engineers & Scientists

Comprehensive Environmental Consulting:

- Hydrologic Engineering/Water Quality Studies
- Professional Soil Classification
- Wetland Delineation & Mitigation Design
- Prescribed Burn Management
- Wetland Permitting
- Floristic Surveys
- Ecological Restoration

(630) 990-0005

2000 York Road

Suite 112

Oak Brook, IL 60521

Island Press

the environmental publisher

Creating a Forestry for the Twenty-first Century The Science of Ecosystem Management

Edited by
*Kathryn A. Kohm
and Jerry E. Franklin*
Foreword by *Jack Ward Thomas*



This volume is an authoritative and multidisciplinary examination of the current state of forestry and its relation to the emergent field of ecosystem management. Features a sixteen-page center section with color photographs that illustrate some of the best on-the-ground examples of ecosystem management from around the world.

576 pages • tables, figures, photos, color insert, index
Cloth: \$50.00 ISBN 1-55963-398-0
Paper: \$30.00 ISBN 1-55963-399-9

Ecosystem Management in the United States An Assessment of Current Experience

Edited by
*Steve L. Yaffee,
Ali F. Phillips,
Irene C. Frenzt,
Paul W. Hardy, Sussane M. Maleki,
and Barbara E. Thorpe*
Foreword by *Gaylord Nelson*
The Wilderness Society



The first practical and comprehensive guide to ecosystem management efforts nationwide, it features descriptions of experiences at 105 ecosystem management sites: the projects and project areas, the stresses evident on site, and the strategies employed to deal with them.

8 1/2 x 11 • 352 pages
tables, figures, charts, maps,
indexes, appendixes, glossary
Paper: \$30.00 ISBN 1-55963-502-9

Metapopulations and Wildlife Conservation

Edited by *Dale R. McCullough*



Contributors describe what metapopulation approaches bring to wildlife conservation and management, present models of how metapopulation thinking has been applied in specific situations, and suggest the analysis required in given cases. Case studies of an array of vertebrate species illustrate nuances of metapopulation theory analysis and its practical applications.

432 pages • tables, figures, photos, index
Cloth: \$55.00 ISBN 1-55963-457-X
Paper: \$28.00 ISBN 1-55963-458-8

The Tallgrass Restoration Handbook For Prairies, Savannas and Woodlands

Edited by
*Stephen Packard and
Cornelia F. Mutel*
Foreword by *William R. Jordan III*
Society for Ecological Restoration



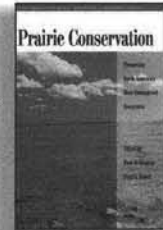
A hands-on manual, chapters provide guidance on all aspects of the restoration process, including:

- planning a restoration
- conserving biodiversity
- restoring populations of rare plants
- plowing and seeding
- obtaining and processing seeds
- conducting burns
- controlling invasive plants
- animal populations
- monitoring vegetation
- and more.

432 pages • tables, figures, appendixes, index
Cloth: \$50.00 ISBN 1-55963-319-0
Paper: \$25.00 ISBN 1-55963-320-4

Prairie Conservation Preserving North America's Most Endangered Ecosystem

Edited by *Fred B. Samson and
Fritz L. Knopf*
Foreword by *Nebraska Governor
E. Benjamin Nelson*

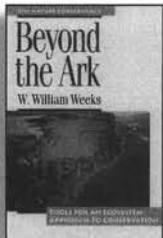


Prairie Conservation is a comprehensive examination of the history, ecology, and current status of North American grasslands. Chapters cover the economic value of prairie; prairie types and the ecological processes that sustain them; prairie fauna; and conservation programs such as the Great Plains Partnership, Canada's Prairie Conservation Action Plan; and the U.S. Prairie Pothole Joint Venture.

352 pages
tables, figures, index
Cloth: \$50.00 ISBN 1-55963-427-8
Paper: \$28.00 ISBN 1-55963-428-6

Beyond the Ark Tools for an Ecosystem Approach to Conservation

Edited by *W. William Weeks*
The Nature Conservancy



Weeks presents a detailed account of the conservation planning discipline that is at the heart of The Nature Conservancy's approach to preserving natural areas, gleaned from his fourteen years with TNC. Offers in-depth description and analysis of TNC's planning process.

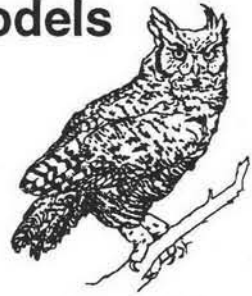
224 pages • tables, figures, photos, index
Cloth: \$40.00 ISBN 1-55963-392-1
Paper: \$20.00 ISBN 1-55963-393-X

Island Press • Box 7, Dept. 4RMN, Covelo, CA 95428

800/828-1302 • 707/983-6432 (outside the continental U.S.) 707/983-6414 (fax) • <http://www.islandpress.com>

RAMAS[®] Ecological Software

- ◆ GIS-based Data Linked to Ecological Models
- ◆ Conservation of Endangered Species
- ◆ Ecological Research and Teaching
- ◆ Metapopulations in Landscapes



RAMAS Software Library is used at over 600 universities and research institutions in 40 countries.

Free software catalog

800-735-4350 fax 516-751-3435

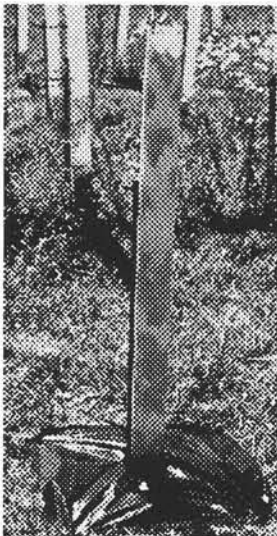
Email: ramas@gramercy.ios.com

Homepage: <http://gramercy.ios.com/~ramas>

Applied Biomathematics

RAMAS is a registered trademark of Applied Biomathematics

TREE PRO'S Survival System



1. TREE PRO Tree Protectors Stop Die-back and Protect Trees from:

- Deer Brouse and Rub
- Rabbits and Rodents
- Wind and Drought
- Mowers
- Chemical Sprays

2. MycorTree Mycorrhizal Root Dip Enhances Growth and Improves:

- Stem and Root Growth
- Survival Rate
- Disease Resistance
- Drought Tolerance

1-800-875-8071

3180 W. 250 N. W. Lafayette, IN 47906

www.nlci.com/treepro

PORTABLE SEED STRIPPERS

- COLLECT YOUR OWN SEED FOR RESTORATION, LANDSCAPING & EROSION CONTROL
- GRASSES, WILDFLOWERS, SHRUBS & WETLAND PLANTS TO 7.5 FT HIGH
- IDEAL FOR ROADSIDES, STREAMBANKS, ECOLOGICALLY SENSITIVE AREAS & NURSERY PLOTS
- LOW IMPACT, PORTABLE, DURABLE & COST EFFICIENT
- IN USE ACROSS NORTH AMERICA & AUSTRALIA



TOP RIGHT: 18" WIDE HAND HELD MODEL
ABOVE: 4' & 12' WIDE PULL TYPE MODELS

Prairie Habitats

BOX 1, ARGYLE, MB CANADA ROC OBO

PHONE 204 467-9371

FAX 204 467-5004

<http://www.prairiehabitats.com>

HUMANATURE



PETER GOIN

HUMANATURE

By Peter Goin

Goin challenges us to intelligently consider the far-reaching ways in which humans are reshaping nature on a planet-wide scale. His striking photographs, the vital core of this book, provide convincing confirmation of the extent to which people and nature have become a continuum—humanature.

With 91 color and 32 b&w photos.

\$29.95 paperback, \$60.00 cloth

At

book-

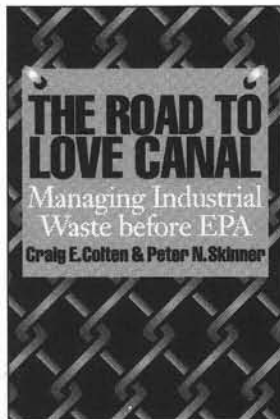
stores,

or call

800-

252-

3206.



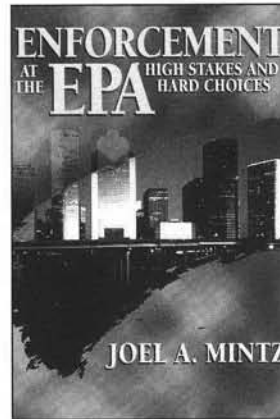
THE ROAD TO LOVE CANAL

Managing Industrial Waste before EPA

by Craig E. Colten and Peter N. Skinner

The toxic legacy of Love Canal brought the crisis in industrial waste disposal to public awareness across the country. To discover why disasters like Love Canal occurred and whether they could have been averted, the authors examine the disposal of industrial waste before the formation of the EPA in 1970.

\$14.95 paperback, \$35.00 cloth.



ENFORCEMENT AT THE EPA

High Stakes and Hard Choices

by Joel A. Mintz

The first comprehensive history of an often neglected part of EPA's responsibilities—the enforcement of federal environmental standards. Drawing on extensive interviews and his own professional experience with the EPA, Mintz explores the historical evolution of the agency's enforcement program, its institutional setting within the larger political arena, and its current strengths and shortcomings.

\$24.95 cloth.

UNIVERSITY OF TEXAS PRESS

Box 7819 • Austin, TX 78713



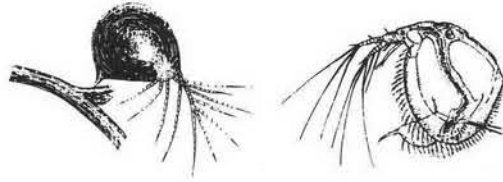
F.W. SCHUMACHER CO., INC.



SEEDS for the nurseryman and forester. Ask for our free catalog of seed items.

F.W. SCHUMACHER CO., INC.
HORTICULTURIST
Sandwich, MA 02563-1023
(508) 888-0659 Fax (508) 833-0322

Munro Ecological Services, Inc.



Full range of wetland services
20+ years, Eastern US regional experience
Ecological restoration design
Reedbed water filter system design
Stabilization with vegetation and bioengineering
Terrestrial and waterways consulting
Professional certification, ESA, SWS
Specialized salvage and restoration accessories
PA native seeds, wetland mixes, and plants

990 OLD SUMNEYTOWN PIKE
HARLEYSVILLE, PA. 19438-1215
PHONE 610-287-0671 FAX 610-287-0672

Roadsides Wetlands Wildlife Reclamation



Conservation Seeds

9006 Mercer Pike Meadville PA 16335
1-800-873-3321 • Fax: 1-814-425-2228



Lic.No. 429252

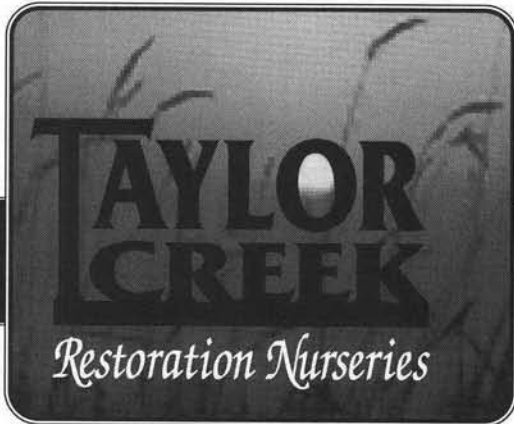
**Sierra View
Landscape, Inc.**

Wildland Restoration Contractors

- Site Evaluation & Plan Preparation (GIS)
- Earthwork & Dam Construction
- Stream Bank Stabilization & Revegetation
- Irrigation System Design & Installation
- Plant Collection & Installation
- Grassland & Erosion Control Seeding
- Restored Wetland, Riparian & Upland
Habitat Maintenance & Monitoring

5729 Manzanita Ave., Carmichael, California 95608

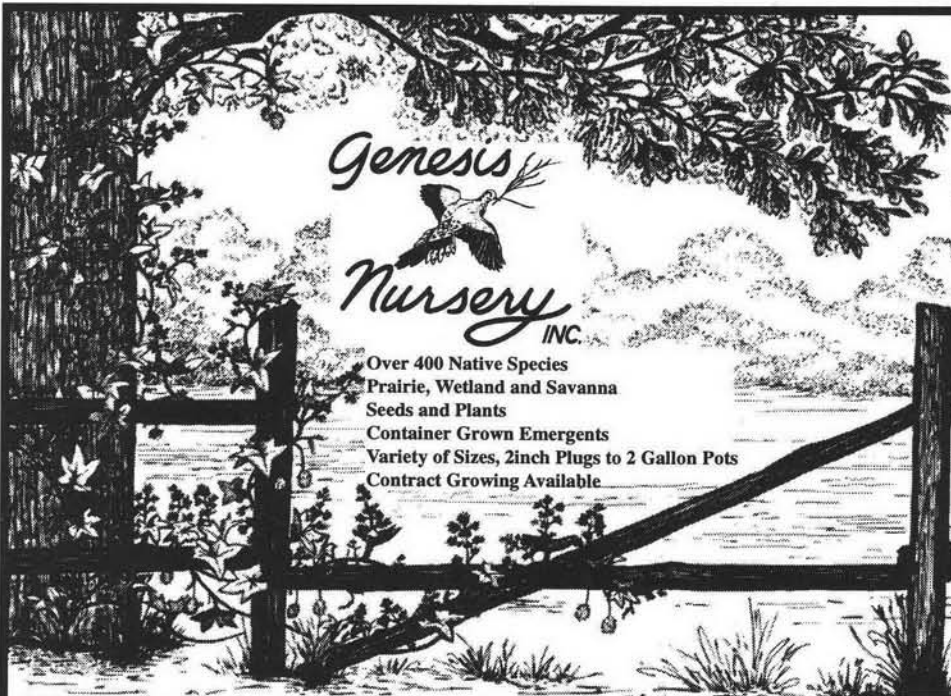
916-344-4943



**A Regional Center
for Restoration Ecology**

- 250 Species of Native Seeds/Plants
 - Prairie & Wetland Restoration
 - Contract Growing
 - Planting Design & Installation

Phone: (608) 897-8641 • Fax: (608) 897-8486 • Rt. 3 Smith Road, P.O. Box 256 • Brodhead, WI 53520



Genesis
Nursery
INC.

Over 400 Native Species
Prairie, Wetland and Savanna
Seeds and Plants
Container Grown Emergents
Variety of Sizes, 2inch Plugs to 2 Gallon Pots
Contract Growing Available

Producers of Plant Materials

for

Large Scale

Native Restorations

and

Wetland Mitigation

23200 Hurd Rd Tampico, Illinois 61283 Phone (815) 438-2220 Fax (815) 438-2222

LSA ECOLOGICAL RESTORATION

- Project Mitigation Plans and Permits •
 - Resource Management Plans •
 - Erosion Control Plans •
- Custom Seed Collection and Plant Propagation •
 - Preservation and Propagation • of Endangered Plant Species
 - Plant and Irrigation •
 - Installation Supervision •
 - Project Nursery Design •
- Mitigation Maintenance and Monitoring •

LSA Associates, Inc.
157 Park Place
Point Richmond, CA 94801
510-236-6810

1 Park Place, Suite 500
Irvine, CA 92714
714-553-0666

3403 10th Street, Suite 520
Riverside, CA 92501
909-781-9310

6721 Five Star Blvd., Suite C
Rocklin, CA 95677
916 630 4600



Frosty Hollow

Ecological Restoration

- since 1982 -

Project Planning & Design Training / Workshops

PACIFIC NORTHWEST NATIVE SEEDS

- ◆ Contract Collection
- ◆ Preliminary Site Surveys
- ◆ Site Specific Seed Collection
- ◆ Scoping Reports & Estimates

Steve Erickson & Marianne Edain
Box 53, Langley, WA, USA 98260
(360) 579-2332 / 579-6456 (message/fax)

The Reveg EdgeSM

A division of the Redwood City Seed Co.,
Box 609, Redwood City, Ca. 94064

Craig C. Dremann (415) 325-7333

"HOW LOCAL IS LOCAL?"

The World's only Scotype survey company,
specializing in native grasses! Send a list of
species and map of survey area for quote.

Native Grass Bare-root plants grown from
your locally collected seed, as low as 20¢.
Call for a list of species or see us on the
internet at:

<http://www.batnet.com/rwc-seed/native.grass.html>

DIFFICULT SITES? Having trouble getting
vegetation established? Send photos of site,
species list of surrounding area, acreage,
reclamation plan (if any), and one quart
sample of soil for free evaluation.

Ion Exchange

Providing Natural Beauty With
A Human Touch

With over 200 species of seeds and over 100 species of plugs
and potted plants grown from our hand-collected seed,
we can meet all your prairie/wetland/savanna needs.

Call or Write for Our Stock/Price List—

1878 Old Mission Drive, Harpers Ferry, IA 52146-7533

(319) 535-7231 or (800) 291-2143

Web: <http://www.ionxchange.com>

e-mail: hbright@polaristel.net



BESTMANN GREEN SYSTEMS, INC.

Bioengineering for erosion
control, water quality,
and habitat restoration.

CONSULTING

Bioengineering design team with over two decades of experience.

MATERIALS

Coconut fiber products designed and proven for streambank and lakeshore erosion control and habitat restoration.

NATIVE WETLAND NURSERY

Offering plants for bioengineering applications.

We invite collaboration
with planners, engineers,
and other professionals.
Please contact us for
literature on our products
and services.



53 Mason Street
Salem, MA 01970
Tel: 508/741-1166
Fax: 508/741-3780

S&S SEEDS

Specializing in top quality seeds,
site-specific custom collecting, and an
extensive inventory for fast delivery.

SEED SPECIES

Over 900 species available in stock:

- ♦ Wildflowers
- ♦ Native Plants
- ♦ Drought-Tolerant Plants
- ♦ Reclamation Grasses
- ♦ Ground Covers
- ♦ Seed Mixes
- ♦ Erosion Control
- ♦ Revegetation

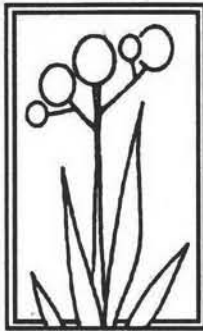
EROSION CONTROL PRODUCTS

- ♦ Ecology Controls M-Binder
- ♦ DSS-40 Acrylic Polymer
- ♦ Soil Guard™ Bonded Fiber Matrix

Call or Fax for Prices and Availability

P.O. BOX 1275
CARPINTERIA, CA 93014-1275
PHONE: 805-684-0436
FAX: 805-684-2798

Melica imperfecta



RESTORATION

DESIGN AND
MASTERPLANNING

BOTANICAL
INVENTORY

NATIVE LANDSCAPE

DESIGN AND RESTORATION, LTD.

C. Colston Burrell, President
407 Second Street N.E., Minneapolis, MN 55413

(612) 379-3106

*"Environmentally Appropriate
Design for People and Plants"*

PRAIRIE SPECIES

Bitterroot Restoration

Bitterroot Consultants
Bitterroot Native Growers
Bitterroot Revegetation Services



The Revegetation Specialists

445 Quast Lane
Corvallis, Montana 59828-9406
(406) 961-4991 Fax: (406) 961-4626
E-mail: bnginc@montana.com

Celebrating 10 Years of Service

- Complete revegetation services
- Site-adapted, container-grown native trees, shrubs and wetland plants
- Mycorrhizal inoculation
- Consulting services

Western Native Seed



SPECIALIZING in native plant seed for the Western Great Plains and the Rocky Mountain Bioregion. Quality, source identified seed at reasonable prices. Many difficult to locate species available including:

Wetlands and Riparian Species
Native Wildflowers and Forbs
Grasses, Shrub and Tree Seed

Call or FAX for a current seedlist.

WESTERN NATIVE SEED

P.O. Box 1463-R, Salida, Colorado 81201
(719) 539-1071 FAX (719) 539-6755

Restoration Success Means:

- Self-Sustaining Ecosystems
- Greater Species Diversity
- Better Soil Structure and Permeability
- Faster Plant Growth
- Higher Plant Survival
- Resistance to Invasive Species

Restoration Success Means:

VAM80
MYCORRHIZAL
INOCULUM

Proven In The Field
For Restoration &
Erosion Control

Tel: (714) 728-0685

Fax: (714) 728-0509

e-mail: tstjohn@prtcl.com

**TREE
OF
LIFE**
NURSERY

Specializing in
California Native Plants

P.O. Box 635, San Juan Capistrano, California 92693

<http://www.prtcl.com/tol/home.htm>

Wetland Permitting and Restoration



Mitigation Design and Monitoring



Section 404 of the Clean Water Act



Section 10 of the Rivers and Harbors Act



Section 7 of the Endangered Species Act



National Environmental Policy Act

GLENN LUKOS ASSOCIATES

Regulatory Services



23441 South Pointe Dr. ■ Suite 150 ■ Laguna Hills, CA 92653
Telephone: (714) 837-0404 ■ Facsimile: (714) 837-5834

Successful revegetation or restoration starts with quality native seed

Call the
North Coast Seed Bank

A regional source for wetland &
riparian native seed/plants

Offering Wildland Seed

- Site specific collection
- Good inventory on hand



5851 Myrtle Avenue
Eureka, California 95503
(800) 200-8969



TETHYS CONSULTANTS, INC.

"Exceeding Expectations"

Engineering ♦ Ecology ♦ Hydrology ♦ Geology

Professional engineers and scientists working together for integrated environmental, ecological and earth science solutions to natural resource management issues, especially those concerning the Chesapeake Bay watershed region.

- ♦ Stream macroinvertebrate surveys
- ♦ Restoration of aquatic and terrestrial habitat
- ♦ Endangered species surveys
- ♦ Environmental assessment and EIS
- ♦ Hydrology studies
- ♦ Geotechnical studies
- ♦ Wetland design, delineation and permitting
- ♦ Wetland and streambank restoration

for further information, call

717-233-7625

717-233-5054 fax

800-277-3267

2933 North Front Street
Harrisburg, PA 17110

Natures Image, Inc.

Specialists in ♦ Seed Imprinting ♦ Habitat Restoration ♦ Maintenance

Benefits

of

Seed

Imprinting

- ♦ Lower cost method of seeding
- ♦ Increases seed to soil contact
- ♦ Higher germination rates & seedling establishment
- ♦ Reduces water runoff
- ♦ Applies seed & mycorrhizal inoculum simultaneously



We provide only quality seed imprinting, landscape construction & maintenance services for all your native habitat restoration needs. Call today and Natures Image, Inc. will make your next project a success.

State License #720513

(714) 589-1254 ♦ Fax (714) 589-2096

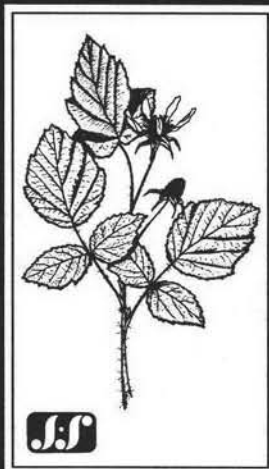
26741 Portola Pkwy., Ste. 1E-437

Foothill Ranch ♦ CA ♦ 92610

Jones & Stokes Associates

*Environmental Planning and
Natural Resource Sciences*

- ♦ Stream and Wetland Restoration
- ♦ Native Habitat Revegetation
- ♦ CAD/GIS Services
- ♦ Environmental Impact Studies
- ♦ Mitigation Plans and Specifications



2600 V Street

Sacramento, California 95818 • 916/737-3000

Bellevue, Washington 206/822-1077
Phoenix, Arizona 602/852-9772
Irvine, California 714/260-1080

*"Giving Nature
A Helping Hand"*



Spence Nursery, Inc.

Landscaping &

- **Plants for Prairie, Sedge Meadow & Emergent Communities**
- Truax Native Grass & Wildflower Drill Services
- Consultation & Design
- Wetland Restorations
- Erosion Control
- Hydro-Seeding

P.O. Box 546

Muncie, IN 47308

Nursery Location: 2220 E. Fuson Rd.

Phone (317) 286-1740

FAX (317) 286-0264

Run your (horizontal) business card and reach the most influential people in the field. Black/white preferred. Cards with colored paper or ink will be made into contact prints for an additional charge. Do not staple, paper clip or write on card. **Rate: \$70 per insertion. A 10% discount given for four consecutive insertions.** Summer '97 closes March 31 and will be mailed July 1997. Send order to: **Restoration & Management Notes, University of Wisconsin Press, 114 N. Murray Street, Madison, WI 53715. Phone: 608/262-5839. Fax: 608/265-5277.** Please call for quarter page or larger size ad rates.

EAST

Wholesale - Natural Landscape Design - Restoration

ARROWWOOD NURSERY INC.



"Growers of Native Plants"

870 W Malaga Road
Williamstown, NJ 08094

Joe & Cathy Arsenault
Ted & Dawn Sowers

Office 609-697-6044
Fax 609-697-6050
Nursery 609-875-4889



CONNOLLY ENVIRONMENTAL INC.

HALLIE CONNOLLY-AUBIN
PRESIDENT

317 U.S. HIGHWAY 46 EAST
DENVER, NEW JERSEY 07834
201/625-2786

AN ENVIRONMENTAL SYSTEMS COLLABORATIVE

LEC

- ECOLOGICAL ANALYSIS
- WILDLIFE HABITAT EVALUATION
- WETLAND DELINEATION
- WATER QUALITY ASSESSMENT
- PERMIT ACQUISITION

LEC Environmental Consultants, Inc.
100 Corporate Place, Suite 110
Peabody, MA 01960
508 535-7861; 508 535-6080 Fax
3 Otis Park Drive Bourne, MA 02532
508 759-0050; 508 759-0013 Fax



J. F. New & Associates, Inc.

Wetland Scientists and Environmental Planners

Will D. Ditzler, Director of Business
708 Roosevelt Road
Walkerton, Indiana 46574

Permitting • Mitigation Design • Wetland Nursery • Natural Systems for Wastewater Treatment • Lake and Stream Enhancement • Biological Inventories

219-586-3400
Fax 219-586-3446

Growers of Quality Nursery Stock for 35 Years

SEEDLINGS AND TRANSPLANTS



NOW SUPPLYING PLANT MATERIAL
TO OVER 100 SOIL AND WATER
CONSERVATION DISTRICTS
WRITE OR CALL FOR CURRENT LISTINGS

CARINO NURSERIES

P.O. BOX 538 INDIANA, PENNSYLVANIA 15701
PHONE 1-800-225-7075



RETTEW Associates, Inc.

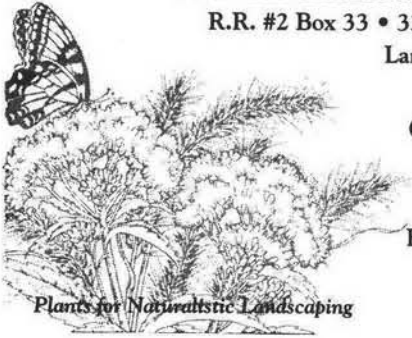
5010 Ritter Road, Suite 102
Mechanicsburg, PA 17055
(717) 697-3551
FAX (717) 697-6953

James G. Kooser
Ecologist

- Rare Plant Surveys
- Natural Area Restoration
- Natural Areas Management
- Wetland Delineation & Permitting
- Wetland Mitigation, Design, Planting & Monitoring

ENGINEERS • LANDSCAPE ARCHITECTS • SURVEYORS
PLANNERS • ENVIRONMENTAL CONSULTANTS

EAST



NORTH CREEK NURSERIES, INC.
 R.R. #2 Box 33 • 33 North Creek Road
 Landenberg, PA 19350

C. Dale Hendricks

(610) 255-0100
 Fax (610) 255-4762

Nemeth Landscaping Wetscape

1469 Oakridge Dr.
 South Fork, PA 15956

Phone 814-266-4663
 Fax 814-266-3439

Hydroseeding

Wetland Plantings
 Native Trees & Shrubs
 Live Sod Transplanting

CENTRAL

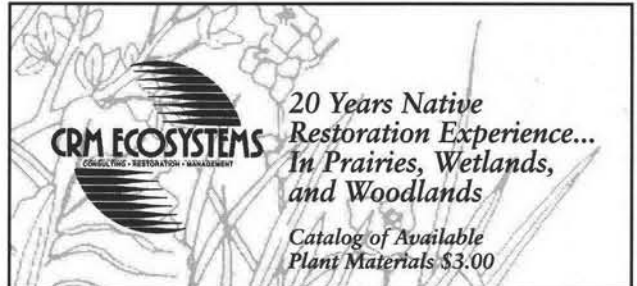


NORMANDEAU ASSOCIATES

- Wetland delineation and restoration
- Environmental impact assessment
- Threatened & endangered species surveys and management plans
- Local, state & Federal permitting
- Impact mitigation
- Aquatic and terrestrial surveys
- Ecological risk assessment
- Fisheries and benthic macroinvertebrate studies
- Aquatic toxicology

RMC Environmental Services Division
 3450 Schuykill Road
 Spring City, PA 19475-1124

Contact Keith R. Maurice
 Phone: (610) 948-4700
 Fax: (610) 948-4752



9738 OVERLAND ROAD • MT. HOREB, WI 53572-2832
 608/437-5245 • FAX 608/437-8982

CENTRAL

BIOLOGIC ENVIRONMENTAL CONSULTING

Restoration of Prairie, Woodland and Wetland
 Natural Area Planning and Management
 Biological Inventory and Assessment
 Education

Michael P. Anderson

Tel: 608-256-4401 122 Nygard St. Madison, WI 53713



Bluestem Farm Native Wildflowers and Grasses

We propagate rare plants for non-profits
 & other organizations
 Ask about our orchid flasking service

Scott Weber
Martha Barrett

55920 Lehman Road
 Baraboo, WI 53913
 608 356-0179

Prairie Moon Nursery

Native Plants and Seeds
Wetland - Prairie - Woodland
 Genotypes for use in Southern
 Minnesota - Wisconsin and
 Northern Illinois - Iowa



Route 3 Box 163
 Winona, MN 55987
 (507) 452-1362

Catalog & Cultural Guide \$2



Conservation Land Use Specialist
 Consulting Ecologist Environmental Planner

(507) 894-4940

Route 1 Box 125

Hokah, MN 55941-9715

**PHILLIPS SEEDING
and RECLAMATION, INC.**

Revegetation Specialists
Seeding of Native Grasses, Forbes and Shrubs

11843 Billings
Lafayette, Colorado 80026
(303) 665-2618



inside passage

seeds and native plant services

- ✿ on-site *consultation* & design document review
- ✿ site-specific *seed harvest*
- ✿ *workshops* on aspects of native plants
- ✿ *wholesale prices* for over 150 species of northwest native plant seeds

p.o. box 639, port townsend, wa 98368 usa
(360) 781-3575 e-mail: inpass@whidbey.net
forest shomer, owner



Marc Boulé, Shapiro and Associates, Inc.
Seattle, WA 206.624.9190

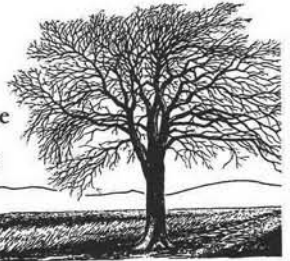
Stan Geiger, SRI/Shapiro, Inc.
Portland, OR 503.274.9000

SHAPIRO

- Wetland creation and restoration
- Stream enhancement and bioengineering
- Lake diagnostics and restoration

Mark Griswold Wilson

Restoration Ecologist
4105-B SW View Point Terrace
Portland, Oregon 97201
VOICE 234-2233 FAX 224-7304



Landscape Contractor (Oregon LCB Number 11610)

4240 Hollis Street
Suite 360
Emeryville
California 94608
Tel: 510-596-2690

2627 J Street
Sacramento
California 95816
Tel: 916-442-5620

Wetland Planning and Restoration

ZENTNER 
and ZENTNER

FUGRO WEST, INC.



Biological and Wetland Studies • Environmental Impact Assessment
Habitat Restoration • Biotechnical Bank Stabilization • Water
Resources • Wetland Permitting • Geotechnical/Geoenvironmental
Engineering • Erosion Control • Habitat Mapping • GIS

David Magney ♦ Kent Reeves ♦ Allyson Biskner

Ventura (Headquarters)
5855 Olivas Park Drive
Ventura, CA 93003
(805) 650-7000

Other offices in:
**Roseville • San Luis Obispo
Santa Barbara • Glendale
San Francisco • Seattle**

Native
Planting
Design

Fuel
Modification

Landscape
Assessments &
Evaluations

Revegetation
& Restoration



Stivers & Associates

150 El Camino Real, Suite 120
Tustin, California 92680

(714) 838-9811
(714) 838-0727 FAX

- Fully Insured
- CA Lic. Landscape Architect, R.L.A. #2708
- CA Lic. Landscape Contractor, C-27, 430-017

Landscape Architects & Environmental Planners



Scott J. Stewart

Post Office Box 455
Rio Vista, California 94571

Business (916) 775-1676
775-1646

Mobile (916) 425-5839
Pager (916) 954-4491

ATTRACT WILDLIFE



IMPROVE OUR ENVIRONMENT

Over 100 Varieties of Plants & Shrubs
Available for Natural Landscaping

- Wetlands
- Woodlands
- Prairies
- Water Gardens
- Mini Refuge
- Reclamation Areas

For instant service & best results,
please send \$2.00 for our 32-page illustrated catalog

J & J TRANZPLANT AQUATIC NURSERY INC.
P.O. Box 227-R&M, Wild Rose, WI 54984-0227