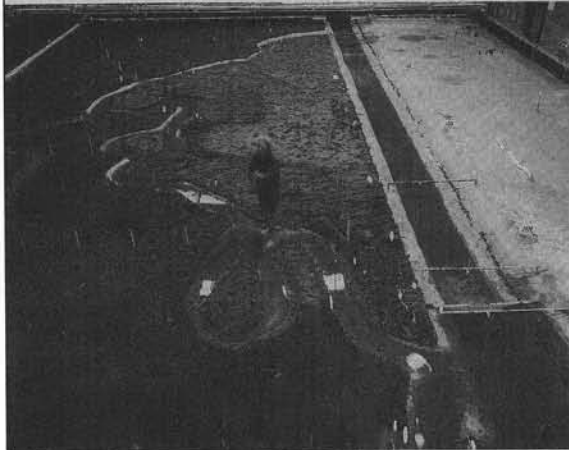


HUMANATURE



PETER GOIN

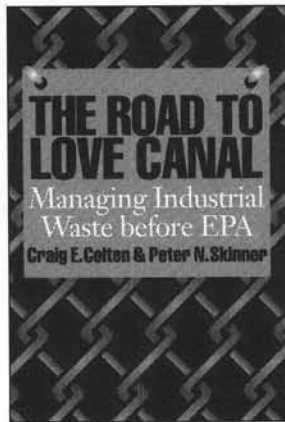
HUMANATURE

By Peter Goin

Goin challenges us to intelligently consider the far-reaching ways in which humans are reshaping nature on a planet-wide scale. His striking photographs, the vital core of this book, provide convincing confirmation of the extent to which people and nature have become a continuum—humanature.

With 91 color and 32 b&w photos.
\$29.95 paperback, \$60.00 cloth

At
book-
stores,
or call
800-
252-
3206.



**THE ROAD TO
LOVE CANAL**
**Managing Industrial
Waste before EPA**
*by Craig E. Colten and
Peter N. Skinner*

The toxic legacy of Love Canal brought the crisis in industrial waste disposal to public awareness across the country. To discover why disasters like Love Canal occurred and whether they could have been averted, the authors examine the disposal of industrial waste before the formation of the EPA in 1970.

\$14.95 paperback, \$35.00 cloth.



**ENFORCEMENT
AT THE EPA**
**High Stakes and
Hard Choices**
by Joel A. Mintz

The first comprehensive history of an often neglected part of EPA's responsibilities—the enforcement of federal environmental standards. Drawing on extensive interviews and his own professional experience with the EPA, Mintz explores the historical evolution of the agency's enforcement program, its institutional setting within the larger political arena, and its current strengths and shortcomings.

\$24.95 cloth.

UNIVERSITY OF TEXAS PRESS 

Box 7819 • Austin, TX 78713

The California Native Grass Association
Announces its
Annual General Membership Meeting

Friday, November 8, 1996
at the Holiday Inn Resort in Monterey, California

The highlight of this year's meeting will be a session entitled
"Honoring the Elders"
during which

Drs. Alan A. Beetle, Beecher Crampton, and G. Ledyard Stebbins
will be present at the meeting, will speak, and will be honored for
their lifelong contributions to our greater understanding of the
ecology, evolution, and taxonomy of California Native Grasses
and other plants.

Everyone is encouraged to attend the meeting so that they do not
miss this opportunity to hear from three of the pioneers in the
fields of native grass research and teaching.

Additional topics to be addressed during the meeting include:

- * Weed Control in Native Grass Establishment
- * Limits to Success in Native Grass Restoration Projects
- * Maintaining Genetic Integrity Among Native Grasses

Be sure to register early as space for this event may be limited
For more information and to register contact:

The California Native Grass Association
P.O. Box 566
Dixon, California 95620
(916) 678-6282

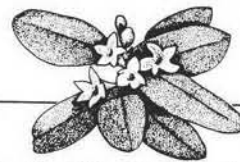
Books by Mail

Conservation Biology
Quantitative Ecology
Natural History

- Free catalogue subscription
- Five catalogues each year
- New and forthcoming books
- Over 800 books from over 200 publishers in each
- Helpful, knowledgeable staff

Visit us on the web:

<http://www.omicron.com/inforium/ledlie/>



Patricia Ledlie Bookseller, Inc.

One Bean Road, Post Office Box 90
Buckfield, Maine 04220
Phone/Fax (207) 336-2778
email: ledlie@maine.com

The Reveg EdgeSM

A division of the Redwood City Seed Co.,
Box 609, Redwood City, Ca. 94064

Craig C. Dremann (415) 325-7333

"HOW LOCAL IS LOCAL?"

The World's only Ecotype survey company,
specializing in native grasses! Send a list of
species and map of survey area for quote.

*Native Grass Bare-root plants grown from
your locally collected seed, as low as 20¢.*
Call for a list of species or see us on the
internet at:

<http://www.batnet.com/rwc-seed/native.grass.html>

DIFFICULT SITES? Having trouble getting
vegetation established? Send photos of site,
species list of surrounding area, acreage,
reclamation plan (if any), and one quart
sample of soil for free evaluation.

Portable Seed Strippers

- Collect your own seed for restoration
& landscaping
- grasses, wildflowers, shrubs &
wetland plants to 6' high
- ideal for roadsides, ecological areas
& nursery plots
- low impact, portable, durable &
inexpensive
- in use across North America & Australia



18" Wide Hand Held Model



4' Wide Pull Type Model

PRAIRIE HABITATS

Box 1, Argyle, MB Canada ROC OBO
Phone (204)467-9371 Fax (204)467-5004

NEW FROM ARIZONA

Science and Ecosystem Management in the National Parks

Edited by **WILLIAM L. HALVORSON & GARY B. DAVIS**

This volume presents twelve case studies of long-term research conducted in and around national parks—including Grand Canyon, Saguaro and Yellowstone—that address major natural resource issues such as forest fires, urban encroachment, and predator control.

384 pp., 28 line drawings, \$40.00 cloth

Grand Canyon, a Century of Change Rephotography of the 1889–1890 Stanton Expedition

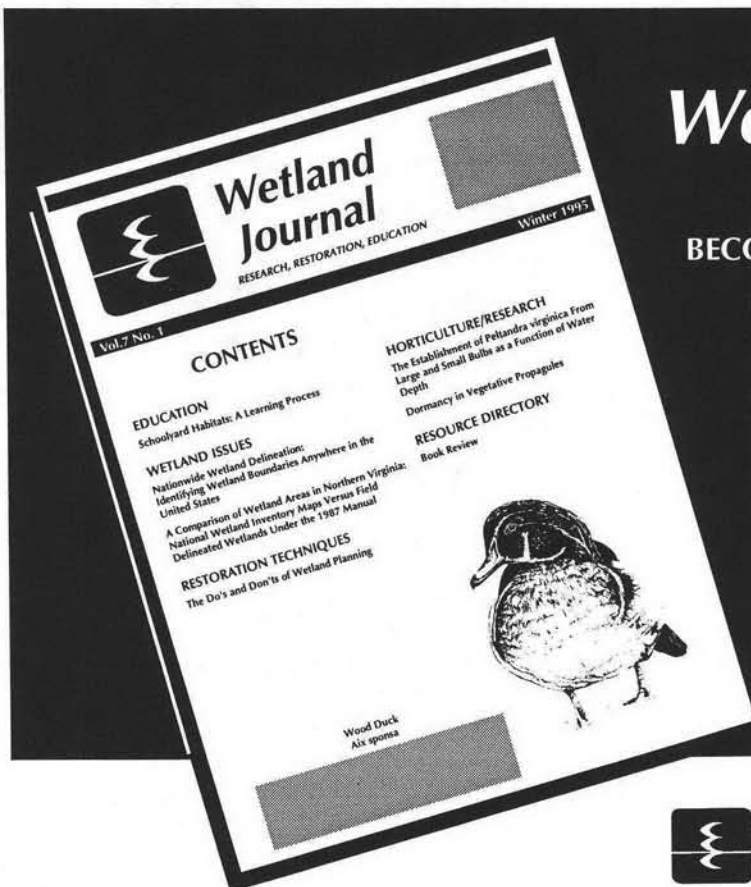
ROBERT H. WEBB

A fascinating account of environmental history and change along the Colorado River through the Grand Canyon, this volume is the most detailed documentation effort ever conducted using repeat photography.

320 pp., 94 photos, 23 line drawings, \$60.00 cloth, \$26.95 paper

THE UNIVERSITY OF ARIZONA PRESS

1230 N. Park Ave., Ste. 102, Tucson, AZ 85719, Phone/Fax 1-800-426-3797



Environmental Concern Inc.

Wetland Journal

BECOME A 1995 ANNUAL MEMBER!

Receive all four 1995 issues, featuring:

- *Wetland Education*
- *Wetland Issues*
- *Wetland Resources*
- *Wetland Soils*
- *Dynamics of Wetlands*
- *Horticulture/Research*
- *Restoration Techniques*

MEMBERSHIP BENEFITS

Send your \$30.00 tax-deductible check, payable to Environmental Concern Inc.

Visa and Mastercard accepted.



Environmental Concern Inc.
P.O. Box P, Dept. RMN St. Michaels, MD 21663
(410) 745-9620 or FAX (410) 745-3517

F.W. SCHUMACHER CO., INC.



SEEDS for the nurseryman and forester. Ask for our free catalog of seed items.

FW. SCHUMACHER CO., INC.
HORTICULTURIST
Sandwich, MA 02563-1023
(508) 888-0659 Fax (508) 833-0322



SYLVA NATIVE

Nursery & Seed Company

Offering a wide selection of native trees, shrubs, and wildflowers of the Northeast and mid-Atlantic States for:

- **Reforestation**
- **Wetland mitigation**
- **Mine reclamation**
- **Streambank and Riparian restoration**



Please contact us for a plant list

R.D. #2, Box 1033

New Freedom, PA 17349

(717) 227-0486 • Fax (717) 227-0484

e-mail mshollins@aol.com

ION EXCHANGE

- **Prairies & Wetlands**
- **Native Seed & Plants**



Howard & Donna Bright

1878 Old Mission Drive

Harpers Ferry, IA 52146

Ph: (319) 535-7231

Fax: (319) 535-7362

800 291-2143

TREE OF LIFE

N U R S E R Y

33201 Ortega Highway

P.O. Box 635

San Juan Capistrano, CA 92693

Tel. (714) 728-0685

Fax (714) 728-0509

Growers of Fine California Native Plants

- Ecological restoration
- Revegetation
- Contract growing
- Authentic landscapes
- Site specific provenance
- Mycorrhizal plant program
- Rare & endangered species recovery

PLANTS OF
EL CAMINO REAL

Habitat Planters



truax COMPANY, INC.

3609 Vera Cruz Ave. • Minneapolis, MN 55422 • (612) 537-8639

- *native grass & wildflower planters*
- *no-till interseeders*
- *tree seed planters*

Designers and Manufacturers of the TRUAX NATIVE GRASS DRILL

ENVIRONMENTAL S/E

Professional Engineers & Scientists

Comprehensive Environmental Consulting:

- Hydrologic Engineering/Water Quality Studies
- Professional Soil Classifier
- Wetland Delineation & Mitigation Design
- Prescribed Burn Management (insured)
- Wetland Permitting
- Floristic Surveys

(708) 990-0005

2000 York Road

Suite 112

Oak Brook, IL 60521

Country Wetlands Nursery & Consulting Ltd.

- * Wetland, woodland and prairie restoration installation, management and enhancement
- * Provision of native seed and plant materials
- * Certified wetland delineation and assessment, and site evaluations
- * Seed bank analysis

We work with ecologists, engineers, administrative agency representatives and environmental advocates to create cost-effective and functional landscapes.

Country Wetlands Nursery
& Consulting Ltd.
575 W20755 Field Dr.
P.O. Box 337
Muskego, WI 53150
414-679-1268
FAX 414-679-1279

S&S SEEDS

Specializing in top quality seeds, site-specific custom collecting, and an extensive inventory for fast delivery.

SEED SPECIES

Over 900 species available in stock:

- ♦ Wildflowers
- ♦ Native Plants
- ♦ Drought-Tolerant Plants
- ♦ Reclamation Grasses
- ♦ Ground Covers
- ♦ Seed Mixes
- ♦ Erosion Control
- ♦ Revegetation

EROSION CONTROL PRODUCTS

- ♦ Ecology Controls M-Binder
- ♦ DSS-40 Acrylic Polymer
- ♦ Soil Guard™ Bonded Fiber Matrix

Call or Fax for Prices and Availability

P.O. BOX 1275
CARPINTERIA, CA 93014-1275
PHONE: 805-684-0436
FAX: 805-684-2798



Melica imperfecta

Successful revegetation or restoration starts with quality native seed

Call the
North Coast Seed Bank

A regional source for wetland & riparian native seed/plants

Offering Wildland Seed

- Site specific collection
- Good inventory on hand



Freshwater Farms

5851 Myrtle Avenue
Eureka, California 95503
(800) 200-8969

Western Native Seed



SPECIALIZING in native plant seed for the Western Great Plains and the Rocky Mountain Bioregion. Quality, source identified seed at reasonable prices. Many difficult to locate species available including:

Wetlands and Riparian Species
Native Wildflowers and Forbs
Grasses, Shrub and Tree Seed

Call or FAX for a current seedlist.

WESTERN NATIVE SEED

P.O. Box 1463-R, Salida, Colorado 81201
(719) 539-1071 FAX (719) 539-6755

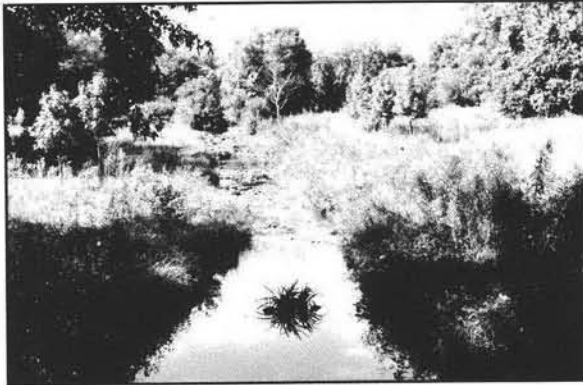


Effective, Ecological, Smart Erosion Control

Nature's own products for streambank stabilization, shoreline protection and habitat improvement

Let plants do all the work for you.

Creative Habitat Corporation sells the successful FIBER SCHINE™ System of Coir-based products used in erosion control. For more information about erosion control blankets, pillows & logs, call:

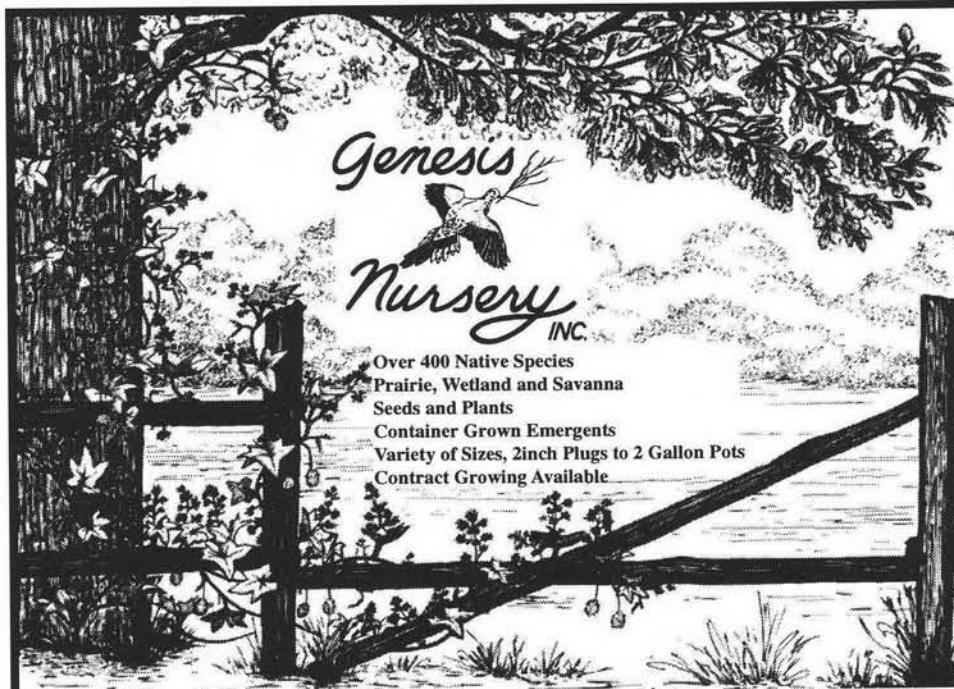


Creative Habitat
Corporation



914-948-4389

253 Old Tarrytown Road, White Plains, NY 10603



Genesis
Nursery
INC.

Over 400 Native Species
Prairie, Wetland and Savanna
Seeds and Plants
Container Grown Emergents
Variety of Sizes, 2inch Plugs to 2 Gallon Pots
Contract Growing Available

Producers of Plant Materials

for

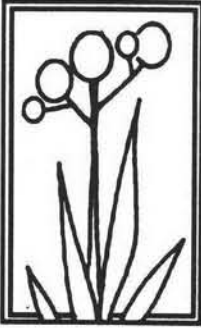
Large Scale

Native Restorations

and

Wetland Mitigation

23200 Hurd Rd Tampico, Illinois 61283 Phone (815) 438-2220 Fax (815) 438-2222



RESTORATION
DESIGN AND MASTERPLANNING
BOTANICAL INVENTORY

NATIVE LANDSCAPE
DESIGN AND RESTORATION, LTD.

C. Colston Burrell, President
 407 Second Street N.E., Minneapolis, MN 55413
 (612) 379-9166

*Environmentally Appropriate
 Design for People and Plants*

PRAIRIE SPECIES

Prairie Restorations, Inc.

- Reconstructions modeled after natural plant communities.
- Planning, specification writing, materials, construction services, management and management planning.
- We strive for excellence and authenticity in our projects.

For further information please write or call:

Prairie Restorations, Inc.
 P.O. Box 327
 Princeton, Minnesota 55371
 (612)-389-4342




STOCK SEED FARMS

LEADERS IN
 PRAIRIEGRASS AND WILDFLOWER SEED
 PRODUCTION SINCE 1957

Producing prairiegrass, wildflower and turf-type buffalograss seed for:

- landscaping
- reclamation
- revegetation
- erosion control
- roadside seeding
- floodplain re-establishment
- rural & urban beautification
- low-maintenance groundcovers






Custom blending available

To receive our beautiful
 1996 Catalog and Information Guide
 call us toll-free at


1-800-759-1520
 fax: 402-867-2442

28008 Mill Rd., Murdock, NE 68407-2350

Wetland Permitting and Restoration

-  Mitigation Design and Monitoring
-  Section 404 of the Clean Water Act
-  Section 10 of the Rivers and Harbors Act
-  Section 7 of the Endangered Species Act
-  National Environmental Policy Act

GLENN LUKOS ASSOCIATES
 Regulatory Services



23441 South Pointe Dr. ■ Suite 150 ■ Laguna Hills, CA 92653
 Telephone: (714) 837-0404 ■ Facsimile: (714) 837-5834

Project Mitigation Plans
and Permits

Resource Management Plans

Erosion Control Plans

Custom Seed Collection and
Plant Propagation

Preservation and Propagation of
Endangered Plant Species

Plant and Irrigation Installation

Project Nursery Design

Mitigation Maintenance
and Monitoring

LSA

ECOLOGICAL RESTORATION

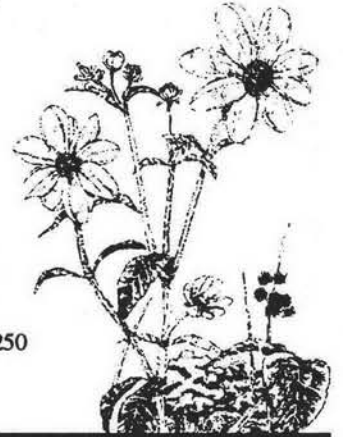
LSA Associates, Inc.

157 Park Place
Pt. Richmond, CA 94801
510 236 6810

1 Park Place, Suite 500
Irvine, CA 92714
714 553 0666

3403 10th Street, Suite 520
Riverside, CA 92501
714 781 9310

2485 Natomas Park Drive #250
Sacramento, CA 95833
916 920 1265



 **HyPure**[®]

Varietal Verification
and Hybrid Purity Assays

Electrophoresis Testing Available

Fast *Same Day Results Available*

Economical *Up to 104 Samples Per Gel*

Flexible *Custom Procedures to Meet Your Needs*

Reliable *25 Years of Electrophoretic Experience*

Run HyPure precast
gels in your lab or
Send your samples
to us.

For more information,
please call Isolab's
Technical Service:

(330) 825-4525

(800) 321-9632

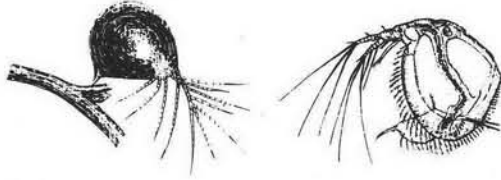
(330) 825-8520

TELEFAX

ISOLAB

Isolab Inc.
Drawer 4350
Akron, Ohio USA
44321

Munro Ecological Services, Inc.



Full range of wetland services
20+ years, Eastern US regional experience
Ecological restoration design
Reedbed water filter system design
Stabilization with vegetation and bioengineering
Terrestrial and waterways consulting
Professional certification, ESA, SWS
Specialized salvage and restoration accessories
PA native seeds, wetland mixes, and plants

990 OLD SUMNEYTOWN PIKE
HARLEYSVILLE, PA. 19438-1215

PHONE 610-287-0671 FAX 610-287-0672

Roadsides Wetlands Wildlife Reclamation



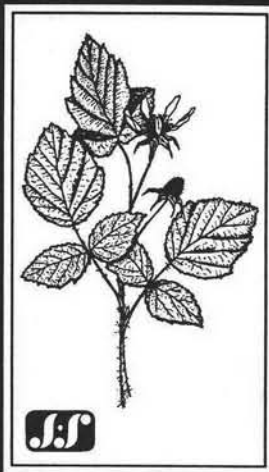
Conservation Seeds

9006 Mercer Pike Meadville PA 16335
1-800-873-3321 • Fax: 1-814-425-2228

Jones & Stokes Associates

*Environmental Planning and
Natural Resource Sciences*

- ◆ Stream and Wetland Restoration
- ◆ Native Habitat Revegetation
- ◆ CAD/GIS Services
- ◆ Environmental Impact Studies
- ◆ Mitigation Plans and Specifications



2600 V Street
Sacramento, California 95818 • 916/737-3000

Bellevue, Washington 206 822-1077
Phoenix, Arizona 602/241-8566
Irvine, California 714/260-1080

Bitterroot Restoration

Bitterroot Consultants
Bitterroot Native Growers
Bitterroot Revegetation Services

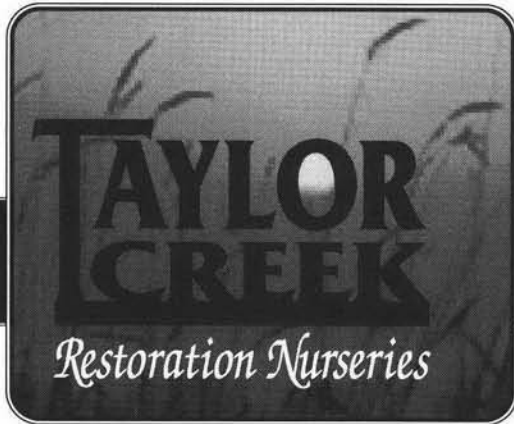


The Revegetation Specialists

445 Quast Lane
Corvallis, Montana 59828-9406
(406) 961-4991 Fax: (406) 961-4626
E-mail: bnginc@montana.com

Celebrating 10 Years of Service

- Complete revegetation services
- Site-adapted, container-grown native trees, shrubs and wetland plants
- Mycorrhizal inoculation
- Consulting services



A Regional Center for Restoration Ecology

- 250 Species of Native Seeds/Plants
- Prairie & Wetland Restoration
 - Contract Growing
- Planting Design & Installation

Phone: (608) 897-8641 • Fax: (608) 897-8486 • Rt. 3 Smith Road, P.O. Box 256 • Brodhead, WI 53520

Louis Berger & Associates, Inc.



Environmental and Engineering Consultants Since 1953

*"American Consulting Engineers Council
National Excellence Award Winner-
Wetland Design"*

- ★ Environmental Impact Studies
- ★ Wetland Design and Restoration
- ★ Landscape Specification
- ★ Habitat Management Plan
- ★ Endangered Species Surveys
- ★ Aquatic Ecology Studies

**For more information or a brochure please
contact: Mark Renna 201-678-1960 ext. 485**

Headquarters: 100 Halsted Street, East Orange, NJ 07019

Offices in: Arizona, Connecticut, District of Columbia, Illinois, Iowa, Louisiana, Maryland, Massachusetts, Mississippi, Nevada, New York, New Mexico, North Carolina, Pennsylvania, Rhode Island, Virginia, Washington, West Virginia

BESTMANN GREEN SYSTEMS, INC.

Bioengineering for erosion
control, water quality,
and habitat restoration.

CONSULTING

Bioengineering design team with over two decades of experience.

MATERIALS

Coconut fiber products designed and proven for streambank and lakeshore erosion control and habitat restoration.

NATIVE WETLAND NURSERY

Offering plants for bioengineering applications.

*We invite collaboration
with planners, engineers,
and other professionals.
Please contact us for
literature on our products
and services.*



53 Mason Street
Salem, MA 01970
Tel: 508/741-1166
Fax: 508/741-3780



Natures Image

Imprinting & Habitat Restoration

How can you benefit from seed imprinting?

Imprinting transforms closed soil surfaces into rough open surfaces that can freely exchange water and soil air while minimizing soil erosion. Advantages of imprinting include:

- * Ability to inoculate the soil with mycorrhizal fungi and apply seed simultaneously.
- * Ability to punch mulch or straw.
- * Imprinting increases seed to soil contact and creates "safe sites" for germination & seedling establishment.
- * Imprinting reduces runoff by increasing percolation of water.
- * Usage for highways, mines, gravel pits, landfills, overgrazed land, fire restoration & mitigation.



(714) 589-1254 • Fax (714) 589-2096

State License #717405
26741 Portola Pkwy., Ste. 1E-437 • Foothill Ranch, CA 92610

"Giving Nature
A Helping Hand"



Spence Nursery, Inc.

Landscaping &

- Plants for Prairie, Sedge Meadow & Emergent Communities
- Truax Native Grass & Wildflower Drill Services
- Consultation & Design
- Wetland Restorations
- Erosion Control
- Hydro-Seeding

P.O. Box 546
Muncie, IN 47308
Nursery Location: 2220 E. Fuson Rd.
Phone (317) 286-1740
FAX (317) 286-0264



Frosty Hollow

Ecological Restoration

- since 1982 -

Project Planning & Design
Training / Workshops

PACIFIC NORTHWEST NATIVE SEEDS

- ◆ Contract Collection
- ◆ Preliminary Site Surveys
- ◆ Site Specific Seed Collection
- ◆ Scoping Reports & Estimates

Steve Erickson & Marianne Edain
Box 53, Langley, WA, USA 98260
(360) 579-2332 / 579-6456 (message/fax)

ENVIRONMENTAL ETHICS



AN INTERDISCIPLINARY JOURNAL DEDICATED TO THE PHILOSOPHICAL ASPECTS OF ENVIRONMENTAL PROBLEMS

The major journal in this field, and where most of the important papers are published. . . . Makes most environmental magazines . . . seem like glossy 4-H club bulletins.

—WHOLE EARTH REVIEW

. . . *Environmental Ethics* offers the sort of deep thinking that is lacking in most environmental magazines. . . . In documenting this philosophic approach, *Environmental Ethics* gives careful readers new ways to consider and understand environmental issues.

—THE BEAR ESSENTIAL

Subscription price per volume (four issues) **anywhere in the world:** Individuals, \$20 (\$7 per copy); Institutions, Libraries, Private Organizations, International, Federal, State, and Local Offices and Agencies, \$40 (\$10 per copy). For air printed matter, add \$16. **All payments must be in U.S. dollars and payable at a bank within the U.S.** For MasterCard or Visa payments, enclose your name as it appears on your card, the card number, and the expiration date. *Prepayment is required at the individual rate.*

Send Remittance to: **Environmental Ethics**, University of North Texas, P.O. Box 13496, Denton TX 76203
Tel.: (817)-565-2727; FAX: (817) 565-4448; E-mail: ee@unt.edu; WWW: <http://www.cep.unt.edu>



A Western North America Native Plant Directory & Journal

HORTUS West

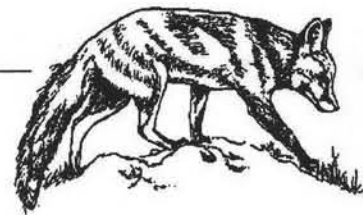
- Formerly *Hortus Northwest*, it now covers 11 western states and 2 Canadian provinces.
- Updated and published every 6 months, our directory lists commercially-available western native species **AND** the vendors who sell them. Included are many hard-to-find wetland & aquatic species.
- Our journal features informative articles about using native plants for restoration, reclamation, & gardening.

THE source for locating western native plants & seeds.

Call today!
(800) 704-7927

Say you saw our ad & receive a **FREE** copy with your paid, one-year [\$9.00] subscription.

Women in Natural Resources



**WE ARE ALWAYS ON THE TRAIL,
SCOUTING OUT NEW SUBSCRIBERS**

We are:

- A quarterly journal with articles & departments
 - A great tool for those interested in workplace diversity
 - For, by, and about professionals who work in natural resources
- Plus, a FREE monthly employment flyer included.*

To subscribe, send \$23 for a personal subscription, or \$39 for a business, university, or government agency subscription.
Non-US, add \$10 for postage. To use a credit card, call the number below.

Women in Natural Resources, P.O. Box 3577, Moscow ID 83843
For information call 208-885-6754; e-mail dixie@uidaho.edu

109

Run your (horizontal) business card and reach the most influential people in the field. Black/white preferred. Cards with colored paper or ink will be made into contact prints for an additional charge. Do not staple, paper clip or write on card. **Rate: \$70 per insertion. A 10% discount given for four consecutive insertions.** Winter '96 issue closes Oct. 9 and will be mailed Dec. 1996. Send order to: **Restoration & Management Notes, University of Wisconsin Press, 114 N. Murray Street, Madison, WI 53715. Phone: 608/262-5839. Fax: 608/265-5277.**
Please call for quarter page or larger size ad rates.

EAST

AN ENVIRONMENTAL SYSTEMS COLLABORATIVE



LEC Environmental Consultants, Inc.
100 Corporate Place; Suite 110
Peabody, MA 01960
508 535-7861; 508 535-6080 Fax
3 Otis Park Drive; Bourne, MA 02532
508 759-0050; 508 759-0013 Fax

Wholesale - Natural Landscape Design - Restoration

ARROWWOOD NURSERY INC.



"Growers of Native Plants"

870 W Malaga Road
Williamstown, NJ 08094

Joe & Cathy Arsenault
Ted & Dawn Sowers

Office 609-697-6044
Fax 609-697-6050
Nursery 609-875-4889



CONNOLLY
ENVIRONMENTAL INC.

HALLIE CONNOLLY-AUBIN
PRESIDENT

317 U.S. HIGHWAY 46 EAST
DENVER, NEW JERSEY 07834
201/625-2786

Growers of Quality Nursery Stock for 35 Years

SEEDLINGS AND TRANSPLANTS



NOW SUPPLYING PLANT MATERIAL
TO OVER 100 SOIL AND WATER
CONSERVATION DISTRICTS
WRITE OR CALL FOR CURRENT LISTINGS



CARINO NURSERIES

P.O. BOX 558 INDIANA, PENNSYLVANIA 15701
PHONE 1-800-225-7075



NORTH CREEK NURSERIES, INC.
R.R. #2 Box 33 • 33 North Creek Road
Landenberg, PA 19350

C. Dale Hendricks

(610) 255-0100
Fax (610) 255-4762



**Nemeth Landscaping
Wetscape**

1469 Oakridge Dr.
South Fork, PA 15956

Phone 814-266-4663
Fax 814-266-3439

Hydroseeding

Wetland Plantings
Native Trees & Shrubs
Live Sod Transplanting

EAST



NORMANDEAU ASSOCIATES

- Wetland delineation and restoration
- Environmental impact assessment
- Threatened & endangered species surveys and management plans
- Local, state & Federal permitting
- Impact mitigation
- Aquatic and terrestrial surveys
- Ecological risk assessment
- Fisheries and benthic macroinvertebrate studies
- Aquatic toxicology

RMC Environmental Services Division
3450 Schuylkill Road
Spring City, PA 19475-1124

Contact Keith R. Maurice
Phone: (610) 948-4700
Fax: (610) 948-4752



J. F. New & Associates, Inc.

Wetland Scientists and Environmental Planners

Will D. Ditzler, Director of Business
708 Roosevelt Road
Walkerton, Indiana 46574

Permitting • Mitigation Design • Wetland Nursery • Natural Systems for Wastewater Treatment • Lake and Stream Enhancement • Biological Inventories

219-586-3400
Fax 219-586-3446

CENTRAL



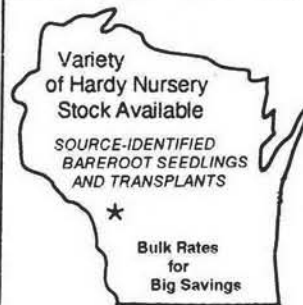
**PRESCRIBED
FIRE
CONSULTING**

(708) 323-6359

SPECIALISTS IN ECOLOGICAL MANAGEMENT BURNING

BOB STANTON

3605 SPRING ROAD • OAKBROOK, ILLINOIS 60521



Variety of Hardy Nursery Stock Available

SOURCE-IDENTIFIED
BAREROOT SEEDLINGS
AND TRANSPLANTS

★
Bulk Rates
for
Big Savings

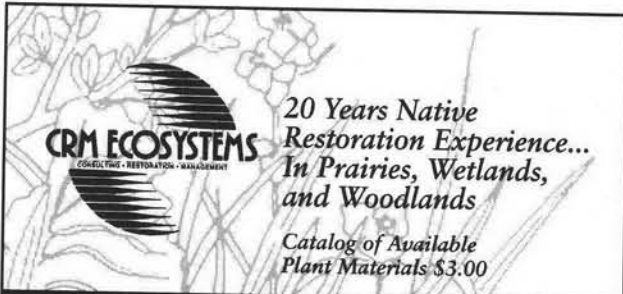


NURSERY & CHRISTMAS TREES

Route 4, Box 141 • Sparta, WI 54656

1-800-458-7275

(608) 272-3171
FAX: (608) 272-3605



CRM ECOSYSTEMS
*20 Years Native
Restoration Experience...
In Prairies, Wetlands,
and Woodlands*

*Catalog of Available
Plant Materials \$3.00*

9738 OVERLAND ROAD • MT. HOREB, WI 53572-2832
608/437-5245 • FAX 608/437-8982

**BIOLOGIC
ENVIRONMENTAL CONSULTING**

Restoration of Prairie, Woodland and Wetland
Natural Area Planning and Management
Biological Inventory and Assessment
Education

Michael P. Anderson

Tel: 608-256-4401 122 Nygard St. Madison, WI 53713



ECO-SYSTEMS DESIGN
KENNETH N. KAILING

Conservation Land Use Specialist
Consulting Ecologist Environmental Planner

(507) 894-4940 Route 1 Box 125
Hokah, MN 55941-9715

Prairie Moon Nursery

Native Plants and Seeds
Wetland - Prairie - Woodland
Genotypes for use in Southern
Minnesota - Wisconsin and
Northern Illinois - Iowa



Route 3 Box 163
Winona, MN 55987
(507) 452-1362

Catalog & Cultural Guide \$2

**PHILLIPS SEEDING
and RECLAMATION, INC.**

*Revegetation Specialists
Seeding of Native Grasses, Forbs and Shrubs*

11843 Billings
Lafayette, Colorado 80026
(303) 665-2618



FORESTRY CONSULTING
REFORESTATION SERVICES

TREE SEED
CONTAINER SEEDLINGS
TRANSPLANT SERVICE
STYROBLOCK CONTAINERS

SILVASEED COMPANY
SALES AND CUSTOM COLLECTION FOREST TREE SEED

MICHAEL GERDES
VICE PRESIDENT - FORESTER

BUSINESS
P.O. BOX 118
ROY, WASHINGTON 98580
PHONE (206) 843-2246
FAX (206) 843-2239

HOME
13007 - 75th AVE. CT. E.
PUYALLUP, WA 98373
PHONE (206) 536-8993

inside passage
seeds and native plant services

- ✿ on-site consultation & design document review
- ✿ site-specific seed harvest
- ✿ workshops on aspects of native plants
- ✿ wholesale prices for over 150 species of northwest native plant seeds



p.o. box 639, port townsend, wa 98368 usa
(360) 781-3575 e-mail: inspass@whidbey.net
forest shomer, owner



Marc Boulé, Shapiro and Associates, Inc.
Seattle, WA 206.624.9190

Stan Geiger, SRI/Shapiro, Inc.
Portland, OR 503.274.9000

SHAPIRO

- Wetland creation and restoration
- Stream enhancement and bioengineering
- Lake diagnostics and restoration



Scott J. Stewart
Post Office Box 455
Rio Vista, California 94571
Business (916) 775-1676
775-1646
Mobile (916) 425-5839
Pager (916) 954-4491

4240 Hollis Street
Suite 360
Emeryville
California 94608
Tel: 510-596-2690

ZENTNER
and **ZENTNER**



2627 J Street
Sacramento
California 95816
Tel: 916-442-5620

Wetland Planning and Restoration

Native
Planting
Design

Fuel
Modification

Landscape
Assessments &
Evaluations

Revegetation
& Restoration



Stivers & Associates
150 El Camino Real, Suite 120
Tustin, California 92680
(714) 838-9811
(714) 838-0727 FAX

- Fully Insured
- CA Lic. Landscape Architect, R.L.A. #2708
- CA Lic. Landscape Contractor, C-27, 430-017

Landscape Architects & Environmental Planners

FUGRO WEST, INC.



Biological and Wetland Studies • Environmental Impact Assessment • Habitat Restoration • Biotechnical Bank Stabilization • Water Resources • Land Use Planning • Geotechnical / Geoenvironmental Engineering • Erosion Control

Richard Meredith
ROSEVILLE
1050 Melody Lane, Suite 160
Roseville, CA 95678
(916) 782-2110

David Magney
VENTURA
5855 Olivas Park Drive
Ventura, CA 93003-7672
(805) 650-7000

ATTRACT WILDLIFE



IMPROVE OUR ENVIRONMENT

Over 100 Varieties of Plants & Shrubs
Available for Natural Landscaping

- Wetlands
- Woodlands
- Prairies
- Water Gardens
- Mini Refuge
- Reclamation Areas

For instant service & best results,
please send \$2.00 for our 32-page illustrated catalog

J & J TRANZPLANT AQUATIC NURSERY INC.
P.O. Box 227-R&M, Wild Rose, WI 54984-0227