

KEEP UP-TO-DATE!!
GET THE LATEST TITLES FROM KRIEGER —

**OCEANIC PROCESSES IN
MARINE POLLUTION, Vol. 1 —
Biological Processes and Wastes
in the Ocean**

by Judith Capuzzo & Dana Kester (Eds.)
Orig. Ed. 1987 280 pp. \$43.50
ISBN 0-89874-810-0

The chapters in this volume are concerned with the biological aspects of waste disposal and are directed, in particular, toward bioaccumulation and toxicological effects of contaminants in marine organisms.

**THE PHILOSOPHY AND PRACTICE
OF WILDLIFE MANAGEMENT**

by Fredrick F. Gilbert &
Donald G. Dobbs
Orig. Ed. 1987 292 pp. \$24.50
ISBN 0-89874-911-5

Most books on wildlife management tend to stress ecology and wildlife biology, failing to recognize that biopolitics is the true basis of effective management. This book shows the mechanics and historical foundations of wildlife management.

**CULTURAL RESOURCES
MANAGEMENT**

by Ronald Johnson & Michael Schene
Orig. Ed. 1987 272 pp. \$23.50
ISBN 0-89874-880-1

This book is not meant to be encyclopedic or all inclusive; it is survey of the sweeping panorama of philosophies, techniques, and activities that are now the thrust of cultural resources management at the local, state and national levels.

**HANDBOOK ON THE
MAINTENANCE OF REPTILES
IN CAPTIVITY**

by Kenneth R.G. Welch
Orig. Ed. 1987 \$17.50
ISBN 0-89874-830-5

The aim of this book is not to tell the reader how to keep reptiles, but to act as a guide, a base for the beginner to start from, and at least in part, a handbook for the more experienced reptile keeper.

**SNAKES OF THE ORIENT:
A Checklist**

by Kenneth R.G. Welch
Orig. Ed. 1987 Price Not Set
ISBN 0-89874-203-0

In this work an attempt is made to list the snake fauna of the Orient as a whole (Pakistan, east of China, south through Asia, to include Japan, Philippine Islands, Indonesia, and Papua New Guinea.) The list includes present-day anemas, original names and references, type locality, distribution and any recent taxonomic references.

**LAND USE PLANNING:
Techniques of Implementation**

by T. William Patterson
Rev. Ed. 1987 Price Not Set
ISBN 0-89874-944-1

Covering both current practices and experimental innovations, this comprehensive reference source describes the most up-to-date organizational and legal considerations affecting land use plans and policies.

When ordering, please add \$4.00 for first book, \$1.00 for each additional to cover shipping.

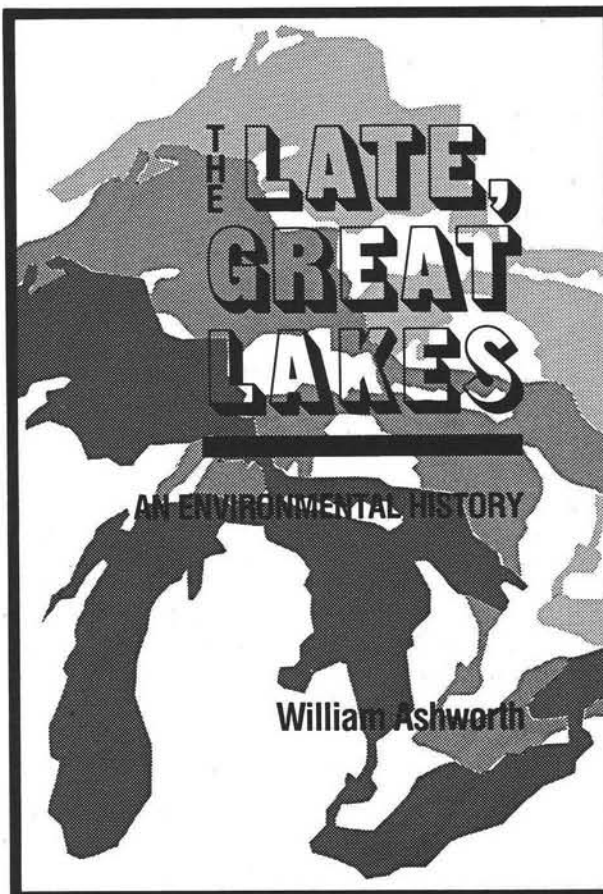


KRIEGER PUBLISHING COMPANY, INC.

P.O. Box 9542, Melbourne, FL 32902-9542

(305) 724-9542





"Thoroughly researched and readable."—The Wall Street Journal

"A fine Great Lakes history."—Detroit Free Press


The Late, Great Lakes is a passionate call to save the world's largest freshwater reservoir from irreversible destruction. Environmental journalist William Ashworth provides a compelling history of the Great Lakes, from their formation in the Ice Age to their impending death in our time. He systematically discusses the wildlife that once flourished in the region—beaver, salmon, whitefish, and trout—and describes the threatening elements which have displaced them—the predatory sea lamprey, the alewives, toxic waste, and volatile solids.

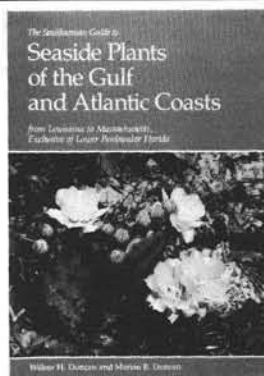
The Late, Great Lakes is a powerful indictment of man's carelessness, ignorance, and apathy toward the Great Lakes. A *Great Lakes Books* paperback edition of the well-received 1986 Knopf publication.

276 pages, 5¾ X 8½

ISBN 0-8143-1887-8

paper, \$12.95

Order from your bookstore or directly from
 WAYNE STATE UNIVERSITY PRESS
 The Leonard N. Simons Building
 5959 Woodward Avenue
 Detroit, Michigan 48202
 (313) 577-4604



588 color, 189 b&w illus.

Cloth: \$45.00

Paper: \$29.95

Please send me _____ cloth-bound and _____ paperbound books. I include \$1.75 p/h for the first book and \$.50 for each additional. My check is enclosed.

Name _____

Address _____

City _____

State _____ Zip _____ Phone _____

MAIL NOW TO: Smithsonian Institution Press, P.O. Box 4866, Hampden Station, Baltimore, MD 21211 • (301) 338-6963

RMN

The Smithsonian Guide to Seaside Plants of the Gulf and Atlantic Coasts from Louisiana to Massachusetts, Exclusive of Lower Peninsular Florida

Wilbur H. Duncan and Marion B. Duncan

The definitive guide to coastal plants encountered while exploring the Gulf and Atlantic seaboard. Profusely illustrated with full-color photos to aid identification; cross-referenced species descriptions; information on flowering, habitat, abundance, and distribution.

New and Recent Titles from Cambridge University Press

The Cambridge Illustrated Dictionary of Natural History

R.J. Lincoln and G.A. Boxshall

This concise dictionary contains over 10,000 entries and 700 illustrations of organisms and their ecosystems, habitats, communities, populations, species, trophic structures, productivity, energetics, dynamics, associations, behavior, reproduction, and physiology.

10 black-and-white plates/30 line diagrams/
700 line drawings

1987/c. 352 pp./30551-9/Cloth \$24.95

The Natural History of Lakes

Mary J. Burgis and Pat Morris

This richly illustrated book introduces the general, scientifically curious reader to the fascinating world of lakes. It beautifully informs the reader about the formation of lakes and their dramatic seasonal patterns, the plants and animals that they support, and the different properties of lake water.

16 pages of color plates/100 black-and-white plates/
75 line drawings

1987/c. 232 pp./30793-7/Cloth \$24.50

The Bird of Time

*The Science and Politics of Natural
Conservation*

N.W. Moore

The author sets out to prove that the significance of conservation is much more fundamental than is conventionally believed, and that its importance will not be recognized until it is viewed within its proper context of time.

1987/290 pp./25259-8/Cloth \$49.50/33871-9/Paper \$15.95

Biological Surveys of Estuaries and Coasts

Edited by J.M. Baker and W.J. Wolff
**Estuarine and Brackish Water Sciences
Association**

A comprehensive introduction to the wide range of biological survey techniques used for estuaries and coasts.

1987/470 pp./32407-6/Cloth \$69.50/31191-8/Paper \$24.95

Chemicals and Society

A Guide to the New Chemical Age
Hugh Crone

This book provides a sound scientific understanding of the facts and issues behind the growing use and misuse of chemicals in our society.

1986/256 pp./30869-0/Cloth \$39.50/31359-7/Paper \$14.95

Ecology, Recreation and Tourism

John M. Edington and Ann Edington

This textbook offers a comprehensive analysis of the ways in which a thorough understanding of ecological factors can help reduce the scale of environmental damage associated with recreational and tourist activities.

1986/200 pp./30646-9/Cloth \$39.50/31409-7
Paper \$15.95

Now in paperback...

The Background of Ecology: Concept

and Theory

Robert P. McIntosh

Cambridge Series in Ecology

"...provides an up-to-date and virtually exhaustive bibliography of relevant primary and secondary materials... a reference work of distinction and one which is sure to be of interest to ecologists." — *Nature*

"The breadth of *The Background of Ecology* is admirable, the references are thorough and usefully indexed, and the writing is clear." — *Science*

1986/383 pp./27087-1/Paper \$16.95

Climate and Plant Distribution

F.I. Woodward

Cambridge Studies in Ecology

The author sets out to examine the central thesis of the distribution of species in relation to climate over different scales of time and space, and reviews the various approaches to explaining observed correlation between plant distribution and climate.

1987/225 pp./23766-1/Cloth \$39.50/28214-4
Paper \$14.95

Forthcoming...

Restoration Ecology

*A Synthetic Approach to Ecological
Research*

**Edited by William R. Jordan III, Michael
E. Gilpin and John D. Aber**

This book explores the ecological concepts and ideas involved in the practice of habitat restoration by taking a theoretical approach that will appeal to ecologists concerned with the structure and dynamics of communities. The contributors examine aspects of this new realization and its implications for both ecology and the practice of habitat restoration.

1987/c. 300 pp./33110-2/Cloth about \$60.00
33728-3/Paper about \$22.50

At bookstores or order from

Cambridge University Press

32 East 57th Street, NY, NY 10022.

Cambridge toll-free numbers for orders only:

800-872-7423, outside NY State. 800-227-0247, NY State only.

MasterCard and Visa accepted.

We carry your books for you

Sources of Native Seeds and Plants

lists 272 suppliers of native plants, including wildflower, grass, tree, and shrub seeds as well as nursery stock. 35 pages; softbound; \$3, postpaid.

Reclaiming Mine Soils and Overburden in the Western United States: Analytic Parameters and Procedures

is a thorough and impartial review of 19 important analytical characteristics of mined-land reclamation planning, prepared by the Western Soil and Overburden Task Force. 336 pages; hardbound; \$25, postpaid.

Aldo Leopold: The Man and His Legacy honors the father of the land ethic. Leopold's legacy lives on in this collection of new essays. 170 pages; softbound; \$10, postpaid.

Please make payment in U.S. funds. MasterCard and VISA accepted.



Soil Conservation Society of America
7515 N.E. Ankeny Road
Ankeny, Iowa 50021-9764
(515) 289-2331

LEARNING FROM THE LAND®

Professional training in field ecology - basic and applied. Workshops in S & N Wis., scheduled and *ad hoc*: Woodlands; Grasslands; Wetlands & Waters; Prairie Restoration; Using & Managing Natural Areas; Teacher Training; Bird Ecology; Grasslike Plants; Natural Landscaping. Both 1½ and 5-day sessions @ \$20/day.

ASSOCIATED ENVIRONMENTAL CONSULTANTS

Innovative environmental problem-solving services: Site inventory & evaluation; Impact analysis; Clarifying goals; Tailored solutions; Specs. & oversight in construction & maintenance phases; Referrals & integration of advice; Sound mitigation & restoration; Native species procurement; Report preparation.

SALE: Proc. II Midwest Prairie Conf. @ Madison & UW-Parkside, 1972, 242 pp., illus. A few copies left @ \$5.00 plus \$1.00 postage, prepaid.

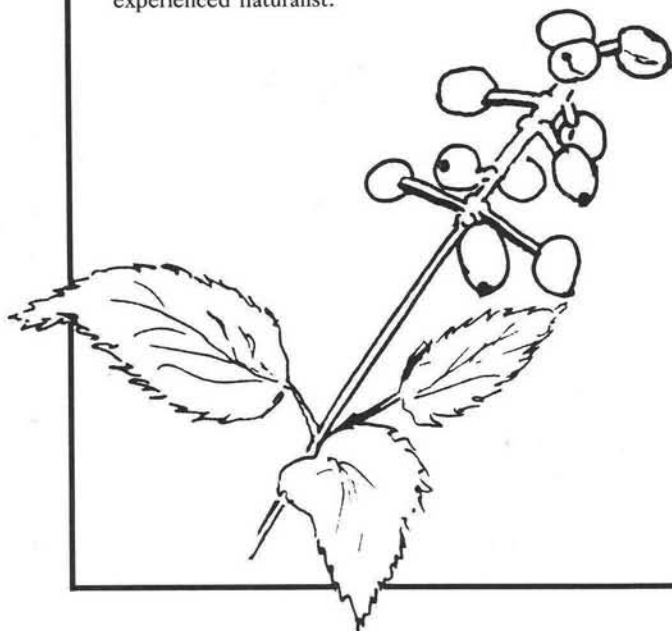
JAMES H. ZIMMERMAN, Ph.D.
Consulting Ecologist

2114 Van Hise Avenue, Madison, WI 53705
608 233-5433 - 40 Years' Experience -
Red Cedar Lake Field Station 608 423-4047

Fall Wildflowers of the Blue Ridge and Great Smoky Mountains

Oscar W. Gupton and Fred C. Swope

This is a comprehensive and versatile guidebook to the fall wildflowers of the Blue Ridge and Great Smoky Mountains. A rare combination of beauty and utility, this unique book will please both the novice and the experienced naturalist.



For the first time many of the interesting and beautiful fruits of wildflowers that can be seen only in the autumn are presented here—including American Mistletoe, Common Milkweed, Sassafras, Pawpaw, Lady's Sorrel, and Field Garlic. Information to aid in the identification of 100 species of trees, shrubs, vines, and herbs is included. A full-page color photograph accompanies descriptions of ninety-three genera, each description including information about general appearance, character of the stem, leaf, flora, and fruit, medicinal or culinary uses, poisonous nature, habitat, and propagation. x, 208 pp., 100 4-color illus. \$12.95

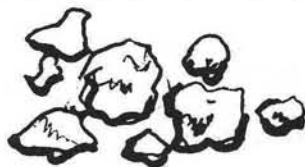
By the same authors

- Trees and Shrubs of Virginia \$12.95
- Wildflowers of the Shenandoah Valley and Blue Ridge Mountains \$12.95
- Wildflowers of Tidewater Virginia \$12.95

Please add \$1.50 postage for first book ordered, \$.75 for each additional book.

University Press of Virginia

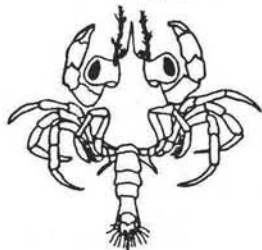
Box 3608 University Station, Charlottesville, VA 22903



Dirt

John Anthony Adams

John Anthony Adams dispels the mysteries surrounding this frequently misunderstood element of nature. He presents information that is useful to gardeners, that can help to clarify recent environmental controversies, or that is just interesting to know—methods that allow crop production on sand dunes, the secret of quicksand, and whether scientific evidence supports theories of organic gardening and acid rain. Concise explanations and anecdotes touch on unexpected aspects of soil, water, agriculture, history, and technology. Other topics include government policies, types of soils and their properties, and mankind's effects on soil and the environment. Superb illustrations complement the text. 176 pp. Illus. \$19.95 cloth; \$11.95 paper



Estuarine Ecology of the Southeastern United States and Gulf of Mexico

Robert R. Stickney

"...a readable account of general ecological descriptions and concepts, covering both abiotic and biotic subjects. ...a rich source of ways in which the environment might be better managed. ..."—*American Scientist*

Harsh and demanding ecosystems, estuaries often remain wilderness preserves of extraordinary beauty despite the constant physical and chemical changes common to such areas. The author presents a wealth

of technical information on the physical, chemical, geological, and biological characteristics, and forcefully argues that the preservation of estuaries depends on man learning to live in harmony with his environment. 324 pp. Illus. \$24.50

U.S. Forest Service Grazing and Rangelands

A History

William D. Rowley

"...a good book and an important topic. Long overdue, it adds another piece to the topical puzzle called conservation history."—*Journal of American History*

"...a major contribution to the understanding of the Forest Service, early attempts to regulate grazing, and many continuing issues relating to range management today. It should be read by anyone interested in those subjects."—*Journal of Soil and Water Conservation*

"...covers everything of importance from the formation of the na-

tional forests in 1891 through the Wilderness Act of 1964 and on past 1980. ...a reliable and comprehensive reference work."—*American Historical Review*. 288 pp. Illus. \$29.50

Marshes of the Ocean Shore

Development of an Ecological Ethic

Joseph V. Siry

Joseph Siry carefully traces the interplay among scientific knowledge, popular values, legal frameworks, and public policy in the development of a wetlands ecological ethic. Since 1945, Siry argues, growing anxiety over destructive industrialism, loss of wild seashores, and the need for coastal resources has produced wetlands protection. He describes, in language appealing to the lay reader as well as the specialist, the nationwide estuarine sanctuary system that exists today as the result of a new ecological awareness. 264 pp. Illus. \$22.50

NATURAL HISTORY and the SOUTHWEST

Plants of the Texas Shore

A Beachcomber's Guide

Mary Michael Cannatella
Rita Emigh Arnold

78 pp. 44 b&w photos. 17 line drawings. \$5.95 paper

Brush Management

Principles and Practices for Texas and the Southwest

Charles J. Scifres

376 pp. 92 illus. \$24.50 cloth; \$9.95 paper

The Natural World of the Texas Big Thicket

Photographs by Blair Pittman
Introduction by William A. Owens

100 pp. 98 color photos. \$24.95 cloth; \$12.95 paper

Common Texas Grasses

An Illustrated Guide

Frank W. Gould

280 pp. 150 illus. \$15.95 cloth; \$8.95 paper

Mountain Islands and Desert Seas

A Natural History of the U.S.-Mexican Borderlands

Frederick R. Gehlbach

320 pp. 65 color, 36 b&w illus. \$19.95

MasterCard and Visa accepted.
Include \$1.50 per order for postage/handling.

TEXAS A&M
University Press

Drawer C
College Station, Texas 77843-4354

- White Pine
- Norway Pine
- Scotch Pine
- Mugho Pine
- Concolor Fir
- Balsam Fir
- White Spruce
- Black Hills Spruce
- Colorado Spruce
- Norway Spruce
- Arborvitae
- Juniper
- Fraser Fir

Seedlings
Transplants
Conifer Seed

Wholesale Prices

Howards Nursery

RFD 4
Sparta, Wisconsin 54656
(608) 272-3171



California
Native
Plants

Wholesale Nursery

Plants of El Camino Real

Growers of fine Native California plants for

- landscaping
- conservation
- revegetation

contract growing available

(714) 728-0685

33201 Ortega Highway

P.O. Box 736

San Juan Capistrano, CA 92693

Shared Expertise

... a valued commodity for anyone involved in the management and restoration of our natural resources...At Prairie Nursery we place nearly two decades of shared expertise and experience at your calling. Next time you're looking for creative native plant solutions...fresh habitat ideas...ask us. We're more than an outstanding source for prairie seeds and plants; we're committed to assisting you in any way we can. Call us.



P.O. Box 365
Westfield, WI
53964
(608) 296-3679

S & S SEEDS THE SEED EXPERTS

*Specializing in top quality seeds...
Offering professional recommendations,
and an extensive inventory for
fast delivery.*

OVER 400 SEED SELECTIONS FOR:

- Wildflowers
- Natives
- Grasses
- Ground Covers
- Seed Mixtures
- Erosion Control
- Landscape Use
- Revegetation

**Call for
FREE Seed Selection Guide**



P.O. Box 4093
San Marcos, CA 92069
619/756-1347

P.O. Box 1275
Carpinteria, CA 93013
805/684-0436

Telex: 658314



E n v i r o n m e n t a l C o n c e r n

SERVICES

Consulting, design and construction
for creation, mitigation and
restoration of wetlands.

Nursery of trees, shrubs and
herbaceous plants for wetlands
landscaping.

Environmental Concern

P.O. Box P.
St. Michaels, Maryland 21663
(301) 745-9620



*Dedicated to ecosystem analysis,
restoration, and management*

*Native plant
communities by design.*

Prairie Restorations, Inc.

P.O. Box 327
Princeton, Minnesota 55371
(612) 389-4342



BLUESTEM PRAIRIE NURSERY

Native Illinois Wildflower Seeds & Plants

GARY COLIN

304 Church Street
Hillsboro, IL 62049
(217) 532-6618

KEN SCHAAI

Rural Route 2
Hillsboro, IL 62049
(217) 532-6344

SERE

Native Landscape Restoration

5023 McKean Avenue
Philadelphia, Pennsylvania
19144

215/848-5099

Working with landscape architects to integrate ecology and sculptural process with landscape design.

SERE works in the field (and forest) to restore the health and unlock the inherent beauty of the native landscape.

iep inc.

ENVIRONMENTAL SCIENTISTS • PLANNERS • ENGINEERS

Environmental Impact Assessment
Municipal and Environmental Planning
Lake Management
Water Supply and Aquifer Studies
Soil & Groundwater Contamination Investigation
Wetland Mapping and Evaluation

NORTHBOROUGH: 617-393-8558 • BARNSTABLE: 617-362-6262
MASSACHUSETTS

CONWAY DESIGN ASSOCIATES

LANDSCAPE ARCHITECTS

Conway, Massachusetts 01341
413-369-4006



3140 Red Hill Avenue • Suite 200
Costa Mesa, CA 92626 • (714) 250-5555

MICHAEL BRANDMAN ASSOCIATES

- EIS/EIR/EA Preparation
- Natural Resources Management
- Biological Impact Assessment
- Vegetation Mapping
- Wildlife Inventories
- Endangered Species Surveys
- Mining Reclamation Plans
- Revegetation/Transplanting
- 404/1603 Permit Acquisition
- Mitigation Design

Regional Office • 411 West 5th Street • Suite 1010
Los Angeles, CA 90013 • (213) 622-4443

Planner
(305) 334-1643

JOSEPH L. GILIO, E.P.

President

Ecologist

P.O. Box 1122
Jensen Beach, FL 33457

WETLANDS MANAGEMENT, INC.



Plan, Design, Aquascape
Native Plants & Trees

Lakes • Wetlands • Mangroves
Dunes

Innovative Leader In Aesthetic Restoration



PHYTON TECHNOLOGIES INC.

PLANT PROPAGATION
1299 Bethel Valley Road
Oak Ridge, Tennessee 37830

RICHARD R. TARDIF, Ph.D.
Director, Revegetation Program

(615) 482-0046 Office
(800) 874-9866
(615) 482-9782 Res.



ECOHORIZONS, INC.

- Natural Landscape Consulting,
Design & Installation
- Pineland & Tropical Hammock
Management
- Pest Plant Control

George Gann-Matzen
President

22601 S.W. 152 Ave.
Goulds, FL 33170
(305) 248-0038



GRIN REAPER

"Sow what you reap"

Patent Pending

The **Grin Reaper** is an attachment for a rotary line trimmer which collects the cut material. Used for the harvest of wild grown seed, it is an efficient collector of the many native species which are not commercially grown, but which are extremely important for habitat restoration.

With the **Grin Reaper**, operators can harvest seed wherever walking is possible, even in steep, rocky or brushy territory. They can be very selective in cutting, therefore harvesting only selected species and avoiding unwanted species. This equipment is efficient for the harvest of single species in large colonies, but its capacity to harvest an assortment of seed is perhaps even more useful for restoration. When used in a diverse habitat, the harvest can emulate the variety of species which are producing seed at that time of year.

For more information, please call or write our office. To order, you must specify straight or bent shaft, and clockwise or counterclockwise rotation (as observed while holding trimmer during operation).

Environmental Survey Consulting

4602 Placid Place
Austin, TX 78731
512/458-8531

PRAIRIE PLUGS

FROM COUNTRY ROAD GREENHOUSES, INC.

MULTIPLY THE VALUE OF PRAIRIE INSTALLATIONS

Use established plants to supplement direct seeded prairie plantings. Prairie Plugs can be planted in highly visible locations for maximum impact.

REDUCE THE WAITING TIME

Introduce colorful perennial wildflowers to show your customers a faster return on their investment.

MAKE YOUR INSTALLATION A SUCCESS

Use Prairie Plugs in your next project. Country Road Greenhouses offers a large variety of one- and two-year-old hardy native perennials.



P.O. BOX 74 • R.R. #1 • MALTA, IL 60150
PHONE: (815) 825-2305

LAKE ENHANCEMENT

Aeration/Destratification to maintain the biological integrity of your lake, pond or reservoir.



P.O. BOX 1446
APOPKA, FL 32704-1446
Phone: (305) 886-3939

FLEX-FENCE MFG. CO.

A Division of FENCE PARTS, INC.

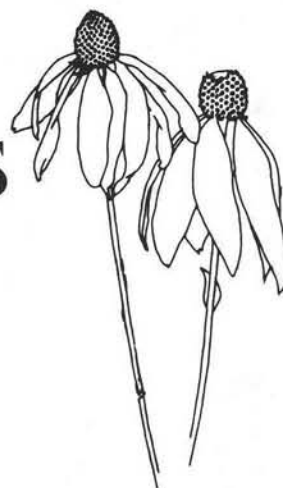


800 North Henderson
Fort Worth, Texas 76107

1-800-233-3623 (National)

Bill Turner

Restoration & Management Notes



Founded: 1981

Editor: William R. Jordan, III

Back Issues Available \$5.00 Each

Volume 4, Number 1 - Summer, 1986

Tropical Seagrass Restoration, *Signe Holtz*

Going to School and Getting Jobs in the Reclamation Business, *Mary Sagal and William R. Jordan III*

Volume 4, Number 2 - Winter, 1986

Bringing Back a Beautiful Landscape - Wetland Restoration on the Des Plains River, Illinois, *Signe Holtz*

Perspective: Restoration and Reunion with Nature, *Carolyn Merchant*

A complete list of back issues and a detailed brochure will be sent upon request. When ordering the above issues please indicate volume, number, and please enclose payment.

ISSN 0733-0707

Published twice yearly at The University of Wisconsin Press

RATES:

Individuals: \$14/yr.
(must prepay)

Institutions: \$31/yr.

Foreign subscribers add \$5.50
for regular postage, or \$11
for Airmail delivery.

REPLY TO:

Journal Division
The University of Wisconsin Press
114 North Murray Street
Madison, Wisconsin 53715
USA
(608) 262-4952
