

# Prairie Restorations, Inc.

Restoring Native Plant Communities Since 1977



**Prairie Restorations, Inc.**  
31646 128th Street  
Princeton, MN 55371  
800-837-5986  
[www.prairieresto.com](http://www.prairieresto.com)

**Products Including:**  
Local Genotype Species  
Seed and Plants  
Trees and Shrubs  
Native Sod Flats  
Seed Mixes

**Services Including:**  
Landscape Design and Installation  
Technical and Design Consulting  
Invasive Species Control  
Prescribed burning

# ALPHA NURSERIES, INC.



Species	Size	Type	Price per 1000
Spicebush	12-18"	Seedlings	\$580.00
American Arborvitae	8-15"	Seedlings	\$260.00
Silver Maple	18-24"	Seedlings	\$590.00
Black Walnut	18-24"	Seedlings	\$610.00
Silky Dogwood	12-18"	Seedlings	\$430.00
Tulip Poplar	18-24"	Seedlings	\$690.00
Swamp White Oak	12-18"	Seedlings	\$560.00
White Pine	7-10"	Seedlings	\$230.00
Norway Spruce	16-24"	Transplants	\$795.00

*Contact us today for complete seedling list!*

3737 65th St. • Holland, MI 49423  
269-857-7804 • Fax 269-857-8162 • Email: [info@alphanurseries.com](mailto:info@alphanurseries.com)

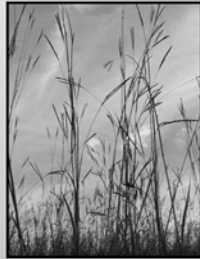
[www.alphanurseries.com](http://www.alphanurseries.com)



## SHOOTING STAR NATIVE SEEDS

**Native Seed for CRP, CREP, DOT,  
BWSR, & Custom Native Mixes**

**Wholesale & Retail**



20740 County Road 33 • Spring Grove, MN 55974

phone: 507.498.3944

[info@ssns.co](mailto:info@ssns.co) • [www.ssns.co](http://www.ssns.co)

## Native Trees & Shrubs

- Quality Native Conifers, Shrubs and Hardwoods
- Contract Growing
- Custom Propagation
- Willow & Cottonwood Live Stakes

Providing the conservation and restoration community with conservation grade seedlings and cuttings since 1993.

## WACD Plant Materials Center

Julie Whitacre, Sales Manager

Jim Brown, Manager

16564 Bradley Road, Bow, WA 98232

360-757-1094

[pmcsales@gmx.com](mailto:pmcsales@gmx.com)

<http://www.wacdpmc.org/>



*"from the water ... to the woods™"*

**Wetland Species  
Storm Water Management  
Restoration and Conservation**

Herbaceous Plants, Grasses, Vines  
Grown in Deep Plugs

Visit our website for current availability:

**[www.NewMoonNursery.com](http://www.NewMoonNursery.com)**

Contact us Toll Free:

**phone 888-998-1951 ☼ fax 888-998-1952**

**975 Barretts Run Road, Bridgeton, NJ 08302**

Zentner and Zentner  
is now



**ZENTNER**  
Planning & Ecology

Zentner and Zentner is pleased to announce our name change to **Zentner Planning and Ecology** to better reflect our work, knowledge, and expertise. In conjunction with this change, long-time Zentner and Zentner partners, Sean Micallef and Brian Davis have now assumed management responsibility for the firm.

Zentner Planning and Ecology will continue to provide the highest quality service for your complex ecological and regulatory issues.

**Please make note of our new address:**

Zentner Planning and Ecology | 120A Linden Street  
Oakland, CA 94607

510-812-6101 | [www.zentner.com](http://www.zentner.com)

[seanm@zentner.com](mailto:seanm@zentner.com) | [briand@zentner.com](mailto:briand@zentner.com)

[www.possibilityplace.com](http://www.possibilityplace.com)

Trees ◐  
Shrubs ◐  
Perennials ◐

# Possibility Place Nursery

Purveyor of Native Plant life

**Contract Growing Available**

**7548 W Monee Manhattan Road  
Monee, Illinois 60449**

**708-534-3988**

**Fax: 708-534-6272**

**SUPPLIER OF NURSERY AND  
WETLAND STOCK TO THE TRADE**



**PIERSON**  
NURSERIES, INC.

**WE CARRY A FULL LINE OF**

- NATIVES
- SHRUBS
- ORNAMENTALS
- PERENNIALS
- GROUNDCOVERS
- VINES
- SHADE & ORNAMENTAL TREES
- WOODY & HERBACEOUS WETLAND PLANTS

**CONTRACT GROWING AVAILABLE**

**CALL FOR SAMPLES OR QUOTES OF  
WETLAND & EROSION CONTROL FABRICS**

24 BUZZELL ROAD  
BIDDEFORD ME 04005  
phone (207) 499-2994 (207) 282-7235  
fax (207) 499-2912

**e-mail: [sales@piersonnurseries.com](mailto:sales@piersonnurseries.com)**

**CALL OR WRITE FOR OUR CATALOG**

## Landscape Journal

The official journal of the Council of Educators in Landscape Architecture (CELA)

Edited by Daniel J. Nadenicek *University of Georgia*  
and David G. Pitt *University of Minnesota*

ISSN: 0277-2426, e-ISSN: 1553-2704, 2/year  
[lj.uwpress.org](http://lj.uwpress.org)

*Landscape Journal* offers in-depth exploration of ideas and challenges that are central to contemporary design, planning, and teaching. In addition to scholarly features, *Landscape Journal* includes editorial columns, creative work, and reviews of books, conferences, technology, and exhibitions.



**THE UNIVERSITY OF WISCONSIN PRESS**  
JOURNALS DIVISION

1930 Monroe Street, 3<sup>rd</sup> Fl., Madison, WI 53711-2059  
[journals@uwpress.wisc.edu](mailto:journals@uwpress.wisc.edu) | (608) 263-0668  
Fax: (608) 263-1173 or (US only) (800) 258-3632  
[lj.uwpress.org/](http://lj.uwpress.org/)

# Genesis Nursery, Inc.



## Wholesale Midwest Native Seeds & Plants

Send us your custom seed mix  
via fax or email.

[info@genesisenurseryinc.com](mailto:info@genesisenurseryinc.com)

Toll Free: 877-817-5325

Fax: 815-438-2222

23200 Hurd Road ~ Tampico, IL  
61283

~Native Grasses, Sedges, Wildflowers & Wetland Shrubs.

~Seeds & plants for natural landscaping, wildlife habitat, reclama-  
tion, roadsides & streambank stabilization.

~Upper Midwest regional seed mixes based on local eco-  
systems. IDOT & Illinois Tollway native mixes & custom mixes  
available.

~Local ecotype & regionally adapted seed.

~Plugs and larger material. ~Contract growing available.

*Over 30 years experience in restoring Midwest landscapes.*

*~www.genesisenurseryinc.com~*



41<sup>ST</sup> YEAR IN BUSINESS

Need top quality site and purpose adapted seed  
specifically selected to meet the requirements of  
your seeding project this fall?

Stevenson Intermountain Seed Inc. has you covered  
with over 450 species and varieties of grass, forb,  
wildflower, legume, and shrub seed in stock and  
ready for delivery. With this broad base of species,  
varieties and local origins, we can genetically select  
those that will be the best match for your project.

All accompanied by great prices, professional,  
knowledgeable assistance, and 41 years of  
reputable experience.

Contact us by phone at 435-283-6639, email at [sales@siseed.com](mailto:sales@siseed.com) or mail at  
Stevenson Intermountain Seed Inc., P.O. Box 2, Ephraim, UT 84627

Please check out our website at [WWW.SISEED.COM](http://WWW.SISEED.COM)

## Restoring the native balance



ERNST

[ernstseed.com](http://ernstseed.com)

[sales@ernstseed.com](mailto:sales@ernstseed.com)

800-873-3321



SEEDS



# US Postal Service Statement of Ownership, Management, and Circulation

1. Publication Title: Ecological Restoration. 2. Publication Number: 1522-4740.  
3. Filing Date: 9/22/17. 4. Issue Frequency: Quarterly. 5. Number of Issues Published Annually: 4. 6. Annual Subscription Price: \$75 Individual; \$289 Institutional. 7. Complete Mailing Address of Known Office of Publication: 1930 Monroe St. Floor 3, Madison, WI 53711-2059. 8. Complete Mailing Address of Headquarters or General Business Office of Publisher: 1930 Monroe St. Floor 3, Madison, WI 53711-2059. 9. Full Names and Complete Mailing Addresses of Publisher, Editor, and Managing Editor: Publisher: University of Wisconsin Press, 1930 Monroe St. Floor 3, Madison, WI 53711-2059; Editor: Dr. Steven Handel, Rutgers, The State Univ. of New Jersey, 1 College Farm Rd., New Brunswick, NJ 08901-1582; Managing Editor: Dr. Myla Aronson, Rutgers, The State Univ. of New Jersey, 1 College Farm Rd., New Brunswick, NJ 08901-1582. 10. Owner: Board of Regents of the University of Wisconsin, Madison, WI 53706. 11. Known Bondholders, Mortgagees, and Other Security Holders Owning or Holding 1 Percent or More of Total Amount of Bonds, Mortgages, or Other Securities: None. 12. Tax Status (For completion by nonprofit organizations authorized to mail at nonprofit rates): Has Not Changed During Preceding 12 Months. 13. Publication Title: Ecological Restoration 14. Issue Date for Circulation Data Below: 8/7/2017. 15. Extent and Nature of Circulation:

	Average No. Copies Each Issue During Preceding 12 Months	No. Copies of Single Issue Published Nearest to Filing Date
a. Total Number of Copies (Net press run)	528	525
b. Paid Circulation (By Mail and Outside the Mail)		
(1) Mailed Outside-County Paid Subscriptions	325	322
(2) Mailed In-County Paid Subscriptions	0	0
(3) Sales Through Dealers and Carriers, Street Vendors, Counter Sales, and Other Paid Distribution	0	0
(4) Paid Distribution by Other Classes of Mail Through the USPS	39	40

	Average No. Copies Each Issue During Preceding 12 Months	No. Copies of Single Issue Published Nearest to Filing Date
c. Total Paid Distribution [Sum of 15b (1), (2), (3), and (4)]	364	362
d. Free or Nominal Rate Distribution (By Mail and Outside the Mail)		
(1) Outside-County Copies	0	0
(2) In-County Copies	0	0
(3) Other Classes Through the USPS	0	0
(4) Outside the Mail (Carriers or other means)	0	0
e. Total Free or Nominal Rate Distribution (Sum of 15d (1), (2), (3) and (4))	0	0
f. Total Distribution (Sum of 15c and 15e)	364	362
g. Copies not Distributed	164	163
h. Total (Sum of 15f and g)	528	525
i. Percent Paid (15c divided by 15f x 100)	100	100

## 16. Electronic Copy Circulation:

	Average No. Copies Each Issue During Preceding 12 Months	No. Copies of Single Issue Published Nearest to Filing Date
a. Paid Electronic Copies	170	175
b. Total Paid Print Copies (15c) + Paid Electronic Copies (16a)	534	537
c. Total Print Distribution (15f) + Paid Electronic Copies (16a)	534	537
d. Percent Paid (Both Print & Electronic Copies) (16b divided by 16c / 100)	100	100

17. Publication of Statement of Ownership: Publication required. Will be printed in the 11/10/2017 issue of this publication. 18. Signature and Title of Editor, Publisher, Business Manager, or Owner: Toni Gunnison, Journals Manager. 608-263-0667. Date: 9/22/17

If you value *Ecological Restoration*, please let your librarian know!

In this time of tightening budgets, some libraries are not renewing journal subscriptions, unless they hear from **you**. If you find the articles you read in *Ecological Restoration* valuable, please take a moment to tell your library by filling out this library recommendation form, or accessing it online at:

<http://uwpress.wisc.edu/journals/pdfs/lib-form.pdf>

To subscribe visit <http://uwpress.wisc.edu/journals/> or contact your subscription agency.

*Ecological Restoration*  
ISSN 1522-4740 • e-ISSN: 1543-4079  
4 issues/year

## I recommend that the library subscribe to *Ecological Restoration*.

PROFESSOR \_\_\_\_\_  
DEPARTMENT \_\_\_\_\_ DATE \_\_\_\_\_  
SIGNATURE \_\_\_\_\_

## Reason for acquisition:

- ☐ This journal is an essential resource for myself and my colleagues  
☐ I refer my students to this journal  
☐ I publish or intend to publish articles within this journal  
☐ Other \_\_\_\_\_



1930 Monroe Street, 3rd Fl., Madison, WI 53711-2059  
journals@uwpress.wisc.edu | Phone: (608) 263-0668  
Fax: (608) 263-1173 or (US only) (800) 258-3632  
<http://uwpress.wisc.edu/journals/>

# ENVIRONMENTAL ETHICS



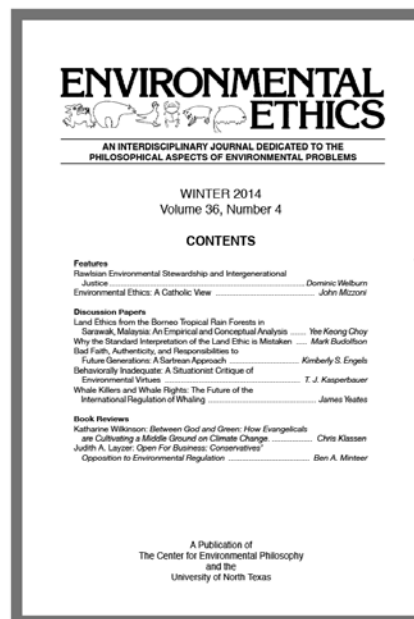
AN INTERDISCIPLINARY JOURNAL DEDICATED TO THE  
PHILOSOPHICAL ASPECTS OF ENVIRONMENTAL PROBLEMS

*Environmental Ethics is intended as a forum for diverse interests and attitudes, and seeks to bring together the nonprofessional environmental philosophy tradition with the professional interest in the subject.*

**AVAILABLE IN  
PRINT OR ONLINE!**

*The online subscription is searchable and includes all issues from volume 1 (1979) in PDF format from the PHILOSOPHY DOCUMENTATION CENTER.*

*The print subscription is four-issues (512 pages) from the CENTER FOR ENVIRONMENTAL PHILOSOPHY.*



Published by the **Center for Environmental Philosophy**  
[www.cep.unt.edu](http://www.cep.unt.edu)

**Print subscription price per volume, anywhere in the world:**  
Individuals, \$40; Institutions, \$80

Subscribe at <http://www.cep.unt.edu/enethics.html> or mail to:  
Environmental Ethics, Center for Environmental Ethics  
University of North Texas  
1155 Union Circle #310980  
Denton, TX 76203-5017

**Questions? Contact us at:**  
940-565-2727  
FAX 950-565-4439  
[ee@unt.edu](mailto:ee@unt.edu)



 **Philosophy  
Documentation  
Center**  
<https://secure.pdcnet.org>

**Online Subscriptions:**

**Individuals**  
Online only (single user): \$90

**Campus-Wide License for Institutions**  
Online only (5 simultaneous users): \$216