

Hardwood Seedlings for Reforestation



With over 80 hardwood species for wetlands mitigation, mine reclamation and wildlife food and habitat, SuperTree Seedlings® is the leading seedling producer providing the highest quality reforestation stock.

High productivity on short rotations

Potential planting on marginal lands

Multiple crops from a single planting

High bulk density and excellent fiber properties

Exceptional performance and yield



8 8 8 . 8 8 8 . 7 1 5 8

SUPERTREESEEDLINGS.COM

Genesis Nursery, Inc.



Wholesale Midwest Native Seeds & Plants

Send us your custom seed mix
via fax or email.

info@genesishnurseryinc.com

Toll Free: 877-817-5325

Fax: 815-438-2222

23200 Hurd Road ~ Tampico, IL
61283

~Native Grasses, Sedges, Wildflowers & Wetland Shrubs.

~Seeds & plants for natural landscaping, wildlife habitat, reclamation, roadsides & streambank stabilization.

~Upper Midwest regional seed mixes based on local eco-systems. IDOT & Illinois Tollway native mixes & custom mixes available.

~Local ecotype & regionally adapted seed.

~Plugs and larger material. ~Contract growing available.

Over 30 years experience in restoring Midwest landscapes.

~www.genesishnurseryinc.com~

*Some see roots...
we see performance.*

Tough sites require sure-fire success. That's why **results-driven managers depend on family-owned Forrest Keeling's RPM plants for better results in all applications...guaranteed.**

- **Superior**, appropriate seed source
- **Unrivaled root mass** and vigorous plant growth
- Over 95% survivability and faster maturation **saves time and money**
- **Broad selection** of trees, shrubs and perennials for one-stop shopping
- **Order online:** availability updated every three hours!



from nature...to us...to you... faster!

88 Forrest Keeling Lane • Elsberry, MO 63343
800-FKN-2401 • (573) 898-5571

www.forrestkeeling.com



**Helping You Put the
Right Seed in the
Right Place
for Over 50 Years!**

- CRP Programs
- Hay & Pasture
- Alfalfa & Legumes
- Lawn Seed
- Fertilizer
- Floodplain Repair
- Landscaping
- Wildflowers
- Waterways
- Wildlife Habitat
- Prairie Restoration
- Warm and Cool-Season Native Grasses
- Sundancer™ Turf-type Buffalograss
- Erosion Control
- Soil Conservation
- Wildlife Habitat
- Acreage Seedings

Free Catalog Available!

www.stockseed.com

1-800-759-1520 • 28008 Mill Road • Murdock, NE 68407

Native Trees & Shrubs

- Quality Native Conifers, Shrubs and Hardwoods
- Contract Growing
- Custom Propagation
- Willow & Cottonwood Live Stakes

Providing the conservation and restoration community with conservation grade seedlings and cuttings since 1993.

WACD Plant Materials Center

Julie Whitacre, Sales Manager

Jim Brown, Manager

16564 Bradley Road, Bow, WA 98232

360-757-1094

pmcsales@gmx.com

<http://www.wacdpmc.org/>



STEVENSON
INTERMOUNTAIN SEED, INC.

38TH YEAR IN BUSINESS

WE SUPPLY A COMPLETE
SELECTION OF SITE AND PURPOSE ADAPTED
GRASS, FORB & SHRUB SEED FOR LAND
RESTORATION PROJECTS THROUGHOUT THE
WESTERN U.S.

OVER 450 SPECIES AND VARIETIES AVAILABLE

Ephraim, Utah / 435.283.6639 / www.siseed.com / sales@siseed.com

SAVE THE DATE

SPONSORSHIPS NOW AVAILABLE!



RESTORE
AMERICA'S
ESTUARIES



THE
COASTAL
SOCIETY

Collaborate to Present

Our Coasts, Our Future, Our Choice

**8th National Summit on Coastal and Estuarine Restoration
and**

25th Biennial Meeting of The Coastal Society

December 10-15, 2016

*Please join us for the largest national gathering of the coastal
restoration and management community in 2016!*

www.estuaries.org/summit

"Filling Oyster Sacks" © 2013, Marian Brister Martinez



ALPHA NURSERIES



Species	Size	Type	Price per 1000
Spicebush	12-18"	Seedlings	\$580.00
American Arborvitae	8-15"	Seedlings	\$240.00
Silver Maple	18-24"	Seedlings	\$590.00
Black Walnut	18-24"	Seedlings	\$610.00
Silky Dogwood	12-18"	Seedlings	\$430.00
Tulip Poplar	18-24"	Seedlings	\$680.00
Swamp White Oak	12-18"	Seedlings	\$560.00
White Pine	8-12"	Seedlings	\$220.00
Norway Spruce	16-24"	Transplants	\$775.00

Contact us today for complete seedling list!

3737 65th St. • Holland, MI 49423

269-857-7804 • Fax 269-857-8162 • Email: info@alphanurseries.com

www.alphanurseries.com

ZENTNER  ZENTNER

Land Planning and Restoration

Success of environmental restoration projects is measured by their performance over time. That success is a direct reflection of the skill of the restoration team—and its ability to solve complex ecological and regulatory issues. Over the last decade, Zentner and Zentner has managed over 500 restoration projects.

Our services include:

- Wetland Delineations
- Restoration and Mitigation Planning
- Biological Assessments
- Endangered Species: Section 7 and 2081 Approvals
- Regulatory Planning and Permitting
- Construction and Post Construction Monitoring

Contact us at:
Oakland: (510) 622-8110



**Prairie Moon®
Nursery**

**More than 600
species of seeds
and plants native
to the midwest.**

**www.prairiemoon.com
(866) 417-8156**

PRAIRIE • WETLAND • SAVANNA • WOODLAND

Free full-color catalog and native plant growing guide!

GREAT PLAINS RESEARCH

A JOURNAL OF NATURAL AND SOCIAL SCIENCES

VOLUME 24, NUMBER 2 FALL 2014



N CENTER FOR GREAT PLAINS STUDIES
UNIVERSITY OF NEBRASKA-LINCOLN

UNIVERSITY OF
NEBRASKA PRESS

Great Plains Research is available online
through Project MUSE which offers free
access via library subscriptions and pay-per-
view options for those without library access.
muse.jhu.edu

For subscriptions or back issues,
visit nebraskapress.unl.edu or call 402-472-8536

www.possibilityplace.com

Trees ◀
Shrubs ◀
Perennials ◀

Possibility Place Nursery

Purveyor of Native Plant life

Contract Growing Available

7548 W Monee Manhattan Road
Monee, Illinois 60449

708-534-3988

Fax: 708-534-6272



"from the water ...to the woods™"

Wetland Species Storm Water Management Restoration and Conservation

Herbaceous Plants, Grasses, Vines
Grown in Deep Plugs

Visit our website for current availability:

www.NewMoonNursery.com

Contact us Toll Free:

phone 888-998-1951 ☼ fax 888-998-1952
975 Barretts Run Road, Bridgeton, NJ 08302

**SUPPLIER OF NURSERY AND
WETLAND STOCK TO THE TRADE**



PIERSON
NURSERIES, INC.

WE CARRY A FULL LINE OF

- NATIVES
- SHRUBS
- ORNAMENTALS
- PERENNIALS
- GROUNDCOVERS
- VINES
- SHADE & ORNAMENTAL TREES
- WOODY & HERBACEOUS WETLAND PLANTS

CONTRACT GROWING AVAILABLE

**CALL FOR SAMPLES OR QUOTES OF
WETLAND & EROSION CONTROL FABRICS**

24 BUZZELL ROAD
BIDDEFORD ME 04005

phone (207) 499-2994 (207) 282-7235

fax (207) 499-2912

e-mail: sales@piersonnurseries.com

CALL OR WRITE FOR OUR CATALOG



Ethics the Environment

conceptual approaches to
ethical theory and ecological
philosophy

EDITED BY VICTORIA DAVION

Ethics & the Environment is an interdisciplinary forum for theoretical and practical articles, discussions, reviews, and book reviews in the broad area encompassed by environmental ethics. Topics include conceptual approaches to ethical theory and ecological philosophy, such as deep ecology and ecological feminism as they pertain to such issues as environmental education and management, ecological economies, and ecosystem health.

PUBLISHED SEMIANNUALLY

eISSN 1535-5306 | pISSN 1085-6633

SUBSCRIBE <http://www.jstor.org/r/iupress>

For more information on Indiana University Press
<http://www.iupress.indiana.edu>



INDIANA UNIVERSITY PRESS

OFFICE OF SCHOLARLY PUBLISHING

Prairie Restorations, Inc.

Restoring Prairies, Wetlands, Shorelines and Woodlands since 1977

Services Including:

Landscape Design and Installation
Invasive Species Control
Prescribed Burning
Technical and Design Consulting

**Prairie
Restorations, Inc.**

P.O. Box 327
Princeton MN 55371
(800) 837-5986

www.prairieresto.com

Products Including:

Local Genotype Native Seed and Plant Materials
Plugs, Four Inch Pots and One Gallon Containers
Trees and Shrubs
Native Sod Flats



Spence Restoration Nursery

- *Native Plants and Seeds for Stormwater Applications*
- *Source Identified Ohio Valley and Southern Great Lakes Genotypes*
- *Large Vigorous Plants that Establish in Deeper water*
- *Mycorrhizal Inoculation for Success on Disturbed Sites*
- *Season Long Availability*
- *Downloadable seed mixes and specifications at www.spencenursery.com*

Spence Restoration Nursery

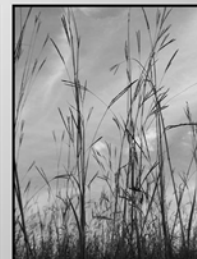
2220 East Fuson Road • Muncie, IN 47302
(765) 286-7154 • Fax (765) 286-0264
www.spencenursery.com
kevin@spencenursery.com



SHOOTING STAR
— NATIVE SEEDS —

**Native Seed for CRP, CREP, DOT,
BWSR, & Custom Native Mixes**

Wholesale & Retail



20740 County Road 33 • Spring Grove, MN 55974

phone: 507.498.3944

info@ssns.co • www.ssns.co

LANDSCAPE JOURNAL

Design, Planning and Management of the Land

The official journal of the Council of Educators in Landscape Architecture (CELA)
 Edited by Lance M. Neckar and David G. Pitt,
 University of Minnesota
 print ISSN: 0277-2426, e-ISSN: 1553-2704
 2 per year | lj.uwpress.org

Landscape Journal offers in-depth exploration of ideas and challenges that are central to contemporary design, planning, and teaching. In addition to scholarly features, *Landscape Journal* includes editorial columns, creative work, reviews of books, conferences, technology, and exhibitions.

THE UNIVERSITY OF WISCONSIN PRESS
JOURNALS DIVISION
 1930 Monroe Street, 3rd FL., Madison, WI 53711-2059
 journals@uwpress.wisc.edu | Phone: (608) 263-0668
 Fax: (608) 263-1173 or (US only) (800) 258-3632
 http://uwpress.wisc.edu/journals

Restoring the native balance



US Postal Service Statement of Ownership, Management, and Circulation

1. Publication Title: Ecological Restoration. 2. Publication Number: 1522-4740.
 3. Filing Date: 9/24/15. 4. Issue Frequency: Quarterly. 5. Number of Issues Published Annually: 4. 6. Annual Subscription Price: \$70 Individual; \$270 Institutional. 7. Complete Mailing Address of Known Office of Publication: 1930 Monroe St. Floor 3, Madison, WI 53711-2059. 8. Complete Mailing Address of Headquarters or General Business Office of Publisher: 1930 Monroe St. Floor 3, Madison, WI 53711-2059. 9. Full Names and Complete Mailing Addresses of Publisher, Editor, and Managing Editor: Publisher: University of Wisconsin Press, 1930 Monroe St. Floor 3, Madison, WI 53711-2059; Editor: Dr. Steven Handel, Rutgers, The State Univ. of New Jersey, 1 College Farm Rd., New Brunswick, NJ 08901-1582; Managing Editor: Dr. Myla Aronson, Rutgers, The State Univ. of New Jersey, 1 College Farm Rd., New Brunswick, NJ 08901-1582. 10. Owner: Board of Regents of the University of Wisconsin, Madison, WI 53706. 11. Known Bondholders, Mortgagees, and Other Security Holders Owning or Holding 1 Percent or More of Total Amount of Bonds, Mortgages, or Other Securities: None. 12. Tax Status (For completion by nonprofit organizations authorized to mail at nonprofit rates): Has Not Changed During Preceding 12 Months. 13. Publication Title: Ecological Restoration. 14. Issue Date for Circulation Data Below: 8/18/2015. 15. Extent and Nature of Circulation:

	Average No. Copies Each Issue During Preceding 12 Months	No. Copies of Single Issue Published Nearest to Filing Date
a. Total Number of Copies (Net press run)	615	575
b. Paid Circulation (By Mail and Outside the Mail)		
(1) Mailed Outside-County Paid Subscriptions	373	360
(2) Mailed In-County Paid Subscriptions	0	0
(3) Sales Through Dealers and Carriers, Street Vendors, Counter Sales, and Other Paid Distribution	0	0
(4) Paid Distribution by Other Classes of Mail Through the USPS	51	50

	Average No. Copies Each Issue During Preceding 12 Months	No. Copies of Single Issue Published Nearest to Filing Date
c. Total Paid Distribution [Sum of 15b (1), (2), (3), and (4)]	424	410
d. Free or Nominal Rate Distribution (By Mail and Outside the Mail)		
(1) Outside-County Copies	0	0
(2) In-County Copies	0	0
(3) Other Classes Through the USPS	0	0
(4) Outside the Mail (Carriers or other means)	0	0
e. Total Free or Nominal Rate Distribution (Sum of 15d (1), (2), (3) and (4))	0	0
f. Total Distribution (Sum of 15c and 15e)	424	410
g. Copies not Distributed	191	165
h. Total (Sum of 15f and g)	615	575
i. Percent Paid (15c divided by 15f x 100)	100	100

16. Electronic Copy Circulation:

	Average No. Copies Each Issue During Preceding 12 Months	No. Copies of Single Issue Published Nearest to Filing Date
a. Paid Electronic Copies	151	159
b. Total Paid Print Copies (15c) + Paid Electronic Copies (16a)	575	569
c. Total Print Distribution (15f) + Paid Electronic Copies (16a)	575	569
d. Percent Paid (Both Print & Electronic Copies) (16b divided by 16c / 100)	100	100

17. Publication of Statement of Ownership: Publication required. Will be printed in the 11/15/2015 issue of this publication. 18. Signature and Title of Editor, Publisher, Business Manager, or Owner: Toni Gunnison, Journals Manager. 608-263-0667. Date: 9/24/15