

# DriWater

TIME-RELEASE WATER

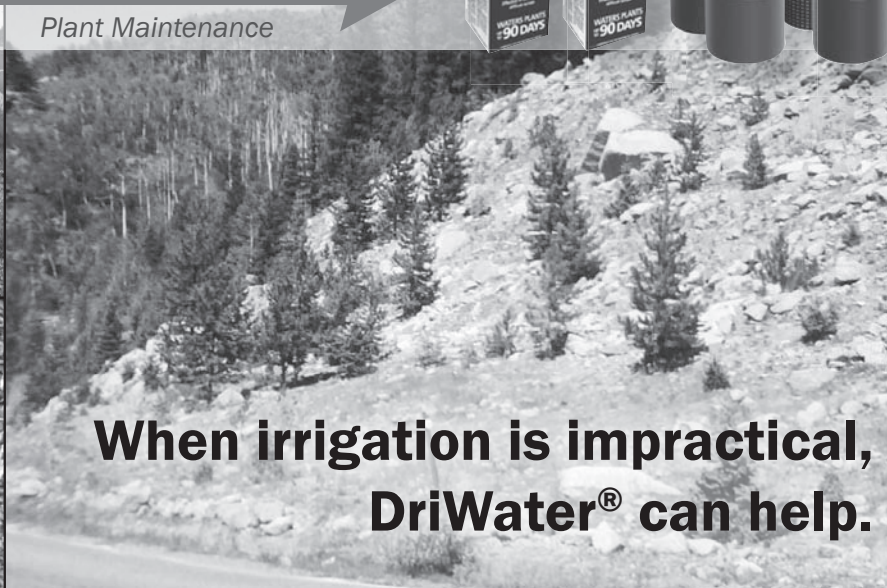
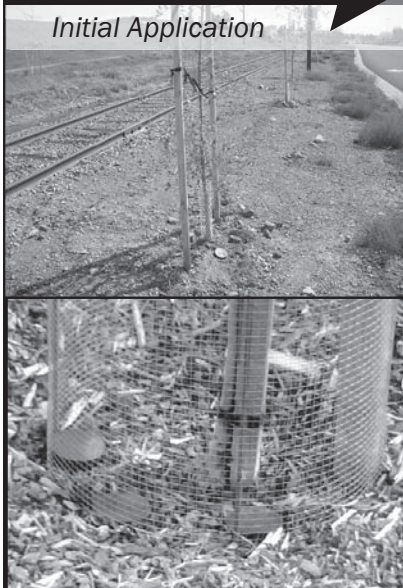
**PLUS**

TO

**THRIVE**

Initial Application

Plant Maintenance



**When irrigation is impractical,  
DriWater® can help.**

Ideal for soil erosion projects & post-fire rehab

DriWater time release water gel is an innovative approach to remote planting irrigation and long-term watering. A non-polymer that supplies plants with water for up to 90 days. Safe, 100% degradable, consisting of 98% potable water and 2% food grade ingredients.

- Increases rooting up to 190%\*
- Establishes trees in one growing season\*
- Reusable, low profile, Tube and Gel packs for areas of high visibility
- Prolongs time between watering
- Non Polymer: does not compete for moisture
- Reduces transplant shock
- Supplies plants moisture at the root
- Avoids topical moisture reducing pests & weeds

**Water where you need it.**

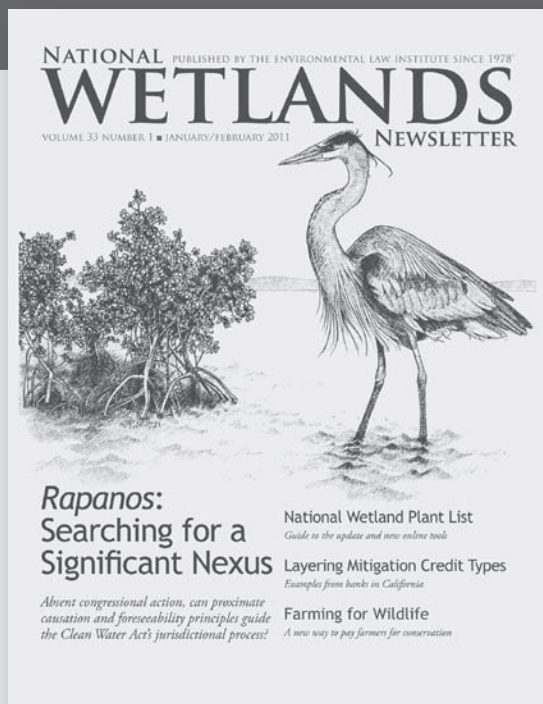


800.DRIWATER | [www.driwater.com](http://www.driwater.com)

\* Based on seasonal benefit planting study. For more information contact [driwater@driwater.com](mailto:driwater@driwater.com)

# NATIONAL WETLANDS NEWSLETTER

Your Definitive Source for Wetlands Policy, Regulation, Science, and Management



*"I rely on the National Wetlands Newsletter as a single, concise source for information on wetland policy, both regulatory and scientific. I wish there were similar high-quality journals that provide up-to-date information for other environmental programs. It is an outstanding resource for folks interested in wetland law and policy."*

Margaret N. Strand  
Venable LLP  
Washington, DC

## In-depth Analysis

Leading wetland experts provide you with analysis and insight into the range of issues affecting wetlands, from the national policy of no-net-loss to mitigation banking, and from Clean Water Act jurisdiction to ecosystem services. You get access to any wetland issue on which you need information.

## Viewpoints

Regular columnists guide you through the most current and pressing issues and debates, while offering unique insight and context for effectively understanding: law and policy; conservation; mitigation; and Interagency Review Teams.

## Courts, Congress, and News Briefs

ELI staff provides you with summaries and analysis on important court cases affecting wetlands and water regulations, updates on relevant legislation as it moves through the U.S. Congress, and news from inside the beltway and around the country.

### Subscription Rates

	U.S.	Int'l
Individual Subscription	\$54	\$61
IP Institutional Subscription 1-25 Users	\$125	\$132
IP Institutional Subscription 25+ Users	\$225	\$232

Each subscription includes 1 print copy

Order Online at:

[www.wetlandsnewsletter.org](http://www.wetlandsnewsletter.org)

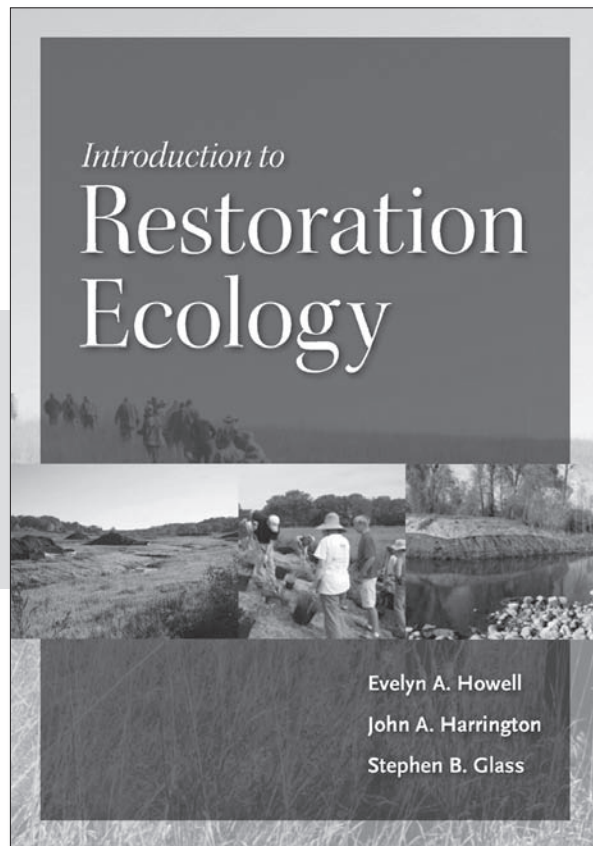
Or Call Us Toll-Free at:

1-800-433-5120



**ENVIRONMENTAL LAW INSTITUTE®**  
AN INDEPENDENT, NON-PARTISAN ENVIRONMENTAL EDUCATION AND POLICY RESEARCH CENTER

2000 L Street, N.W. | Suite 620 | Washington, D.C. 20036-4915  
Phone (Toll-Free) 1-800-433-5120 | Email: [orders@eli.org](mailto:orders@eli.org)



## A next-generation textbook for the next generation of environmental leaders

- Open and inviting design
- Color photos
- Figures, tables, and graphs
- Dedicated YouTube channel
- Instructor's Manual

Evelyn A. Howell, John A. Harrington, and Stephen B. Glass, recognized experts in the restoration community, have been teaching restoration ecology for more than 30 years.

Their classroom-tested approach, which blends methodology and problem-solving skills, gives students a strong conceptual framework that they can adapt to a variety of sites anywhere in the world. Both professors and students will appreciate the pedagogical structure, which includes

- Learning Objectives
- Food for Thought questions
- Key Concepts and Resources for Further Study
- Glossary
- Case Studies.

Restoration ecology is an emerging field and an interdisciplinary endeavor. This text will be useful for courses in landscape architecture, biology, environmental studies, ecology, botany, and planning, as well as restoration ecology.

**Electronic examination copy, instructor's manual, table of contents, and more at [www.IntroRestorationEcology.com](http://www.IntroRestorationEcology.com)**

**To order an exam copy, please visit [islandpress.org/educators](http://islandpress.org/educators)**





## Spence Restoration Nursery

- *Native Plants and Seeds for Stormwater Applications*
- *Source Identified Ohio Valley and Southern Great Lakes Genotypes*
- *Large Vigorous Plants that Establish in Deeper water*
- *Mycorrhizal Inoculation for Success on Disturbed Sites*
- *Season Long Availability*
- *Downloadable seed mixes and specifications at [www.spencenursery.com](http://www.spencenursery.com)*

### Spence Restoration Nursery

2220 East Fuson Road • Muncie, IN 47302  
(765) 286-7154 • Fax (765) 286-0264  
[www.spencenursery.com](http://www.spencenursery.com)  
[kevin@spencenursery.com](mailto:kevin@spencenursery.com)

## ZENTNER ZENTNER

*Land Planning and Restoration*

Success of environmental restoration projects is measured by their performance over time. That success is a direct reflection of the skill of the restoration team—and its ability to solve complex ecological and regulatory issues. Over the last decade, Zentner and Zentner has managed over 500 restoration projects.

Our services include:

- Wetland Delineations
- Restoration and Mitigation Planning
- Biological Assessments
- Endangered Species: Section 7 and 2081 Approvals
- Regulatory Planning and Permitting
- Construction and Post Construction Monitoring

Contact us at:  
**Oakland: (510) 622-8110**

## ERNST SEEDS

### Return to Natives!

**Specializing in species for  
uplands, wetlands, and  
stream bank stabilization.**

**Contact us today!**

**TF: 800-873-3321**

**O: 814-336-2404**

**F: 814-336-5191**

**[sales@ernstseed.com](mailto:sales@ernstseed.com)**

**[www.ernstseed.com](http://www.ernstseed.com)**



**Prairie Moon®  
Nursery**

**More than 600  
species of seeds  
and plants native  
to the midwest.**

**[www.prairiemoon.com](http://www.prairiemoon.com)  
(866) 417-8156**

**PRAIRIE • WETLAND • SAVANNA • WOODLAND**

*Free full-color catalog and native plant growing guide!*

*Where Horticulture Meets Ecology™*

## Native Plant Solutions *for* Ecological Landscapes

North Creek is proud to offer a  
broad selection of eastern US native  
perennial, ornamental grass,  
fern and vine

### Landscape Plugs™.

Our native plants are ideal for  
stormwater management,  
landscape restoration,  
soil stabilization, meadow  
& rain garden plantings.

*\*Contract growing option available upon request*



www.northcreeknurseries.com | info@northcreeknurseries.com  
388 North Creek Road | Landenberg, PA 19350 | 1.877.ECO.PLUG

# Prairie Restorations, Inc.

Restoring Prairies, Wetlands, Shorelines and Woodlands since 1977

### Services Including:

Landscape Design and Installation  
Invasive Species Control  
Prescribed Burning  
Technical and Design Consulting

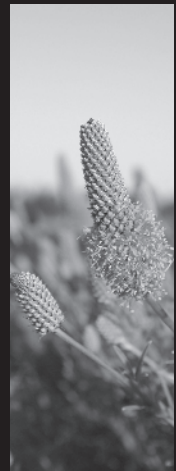
**Prairie  
Restorations, Inc.**

P.O. Box 327  
Princeton MN 55371  
(800) 837-5986

www.prairieresto.com

### Products Including:

Local Genotype Native Seed and Plant Materials  
Plugs, Four Inch Pots and One Gallon Containers  
Trees and Shrubs  
Native Sod Flats





SUPPLIER OF NURSERY AND  
WETLAND STOCK TO THE TRADE



**PIERSON**  
NURSERIES, INC.

WE CARRY A FULL LINE OF

- NATIVES
- SHRUBS
- ORNAMENTALS
- PERENNIALS
- GROUNDCOVERS
- VINES
- SHADE & ORNAMENTAL TREES
- WOODY & HERBACEOUS WETLAND PLANTS

CONTRACT GROWING AVAILABLE

CALL FOR SAMPLES OR QUOTES OF  
WETLAND & EROSION CONTROL FABRICS

24 BUZZELL ROAD

BIDDEFORD ME 04005

phone (207) 499-2994 (207) 282-7235

fax (207) 499-2912

e-mail: [sales@piersonnurseries.com](mailto:sales@piersonnurseries.com)

CALL OR WRITE FOR OUR CATALOG

ESA PWA

Joining  
Forces

Philip Williams Associates (PWA) has merged with ESA to provide clients with additional expertise in planning, science and environmental engineering. We work together to develop integrated solutions for coastal planning, fluvial restoration, flood management and sea-level rise.

[www.esassoc.com](http://www.esassoc.com)

[www.pwa-ltd.com](http://www.pwa-ltd.com)



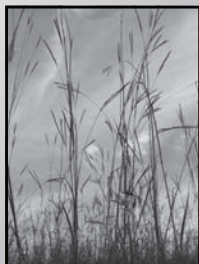
**SHOOTING STAR  
NATIVE SEEDS**

**NATIVE PRAIRIE GRASS AND WILDFLOWER SEEDS**

Production and sales of native seed

Installation and management of prairies and wetlands

Native seed mixes for CRP, CREP, DOT, BWSR,  
residential, commercial, and public projects



20740 County Road 33 • Spring Grove, MN 55974

phone: 507.498.3944

[ssns@springgrove.coop](mailto:ssns@springgrove.coop)

[www.shootingstarnativeseed.com](http://www.shootingstarnativeseed.com)

California Native Grasses,  
Wildflowers & Forbs

Site Specific & Source Identified | Seed Collection & Increase

Pacific  
Coast Seed  
INC.

Also distributing – AM 120 mycorrhizal inoculants, BioSol 7-2-1 Mix®,  
Hydrostraw™ & fertilizers, mulches & soil stabilizers

**[www.pcseed.com](http://www.pcseed.com)**

(925) 373-4417 • Fax (925) 373-6855 | 533 HAWTHORNE PLACE • LIVERMORE, CA 94550



**Call, Fax or Write for  
Free Catalog Today!**

**Toll Free  
877  
817-5325**

**23200 Hurd Road  
Tampico, IL 61283  
(815) 438-2220  
Fax: (815) 438-2222**

## **IL DBE Certified WHOLESALE MIDWESTERN NATIVE SEEDS AND PLANTS**

Native Grasses, Sedges, Wildflowers, and Wetland Shrubs.

Seeds and plants for natural landscaping, wildlife habitat, reclamation, roadsides, wetlands, and streambank stabilization.

Upper Midwest regional seed mixes based on local ecosystems.

IDOT and Illinois Tollway native mixes, and custom seed mixes available.

**Local ecotype and regionally adapted seed**

**Fax your custom seed mixes to 815-438-2222.**

*Plugs and larger materials - Contract growing available.*

***Over 20 years experience in restoring Midwest landscapes***

**granite  
SEED**  
and erosion control

**The largest selection and highest quality native seed in the western United States, custom blended to your project's unique specifications.**



**Restoration presents real challenges.  
Granite Seed is ready to help.**

**801-768-4422  
[www.graniteseed.com](http://www.graniteseed.com)**

© Granite Seed



SOUND  
NATIVE  
PLANTS

Ecological Restoration  
Wetland Delineation & Mitigation  
Shoreline Bioengineering



Environmental consulting services including wetlands, rain gardens, oak woodlands, shorelines, habitat management plans and slope stabilization

Landscape contractors specializing exclusively in restoration, licensed in Washington & Oregon

Wholesale native plant nursery with extensive selection of Pacific Northwest trees, shrubs, herbaceous perennials and emergents

PO Box 7505, Olympia, WA 98507  
PH (360) 352-4122 FAX (360) 867-0007  
[www.soundnativeplants.com](http://www.soundnativeplants.com)  
WA #SOUNDNP017BL OR LCB #8781



*"from the water ...to the woods™"*

**Wetland Species  
Storm Water Management  
Restoration and Conservation**

Herbaceous Plants, Grasses, Vines  
Grown in Deep Plugs

Visit our website for current availability:  
**[www.NewMoonNursery.com](http://www.NewMoonNursery.com)**

Contact us Toll Free:  
**phone 888-998-1951 ☀ fax 888-998-1952**  
**975 Barretts Run Road, Bridgeton, NJ 08302**



**Midwest  
Grower  
Custom Seed  
Mixes and  
Native Plants**

- DOT
- Conservation
- Stormwater Management
- Erosion Control
- Habitat

**[www.agrecol.com](http://www.agrecol.com)**

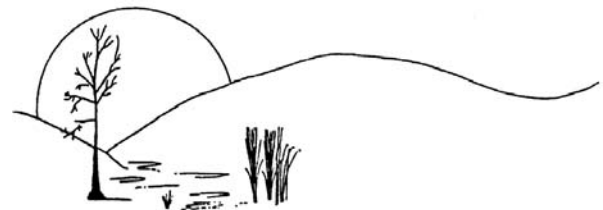


[ecosolutions@agrecol.com](mailto:ecosolutions@agrecol.com)

Agrecol LLC  
10101 N. Casey Rd.  
Evansville, WI  
53536

Call 608-223-3571  
Fax 608-884-4640

© 2010 Agrecol LLC



*Balance  
Restoration Nursery*

*"Our specialties are wetland/riparian species,  
expedited rush orders, and knowledgeable  
customer service."*

*Wholesale Bare-Root  
Wetland/Riparian*

*[balancenursery@yahoo.com](mailto:balancenursery@yahoo.com)  
Phone 541-942-5530  
Fax 541-942-7265*

*Availability on Facebook*



[www.possibilityplace.com](http://www.possibilityplace.com)

Trees ◐  
Shrubs ◐  
Perennials ◐

# Possibility Place Nursery

Purveyor of Native Plant life

**Contract Growing Available**

7548 W Monee Manhattan Road  
Monee, Illinois 60449

**708-534-3988**

Fax: 708-534-6272



**Cardno  
JFNew**

**Native Plant Nursery**

Customized Seed Mixes • Native Seed and Plugs  
Specific Genotype Propagation • Contract Growing

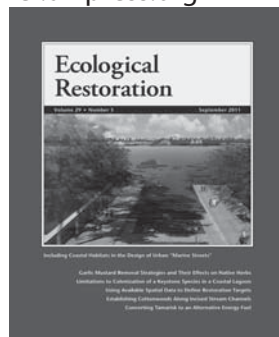
[jfnew.nursery.sales@cardno.com](mailto:jfnew.nursery.sales@cardno.com)

574 586 2412

[www.cardnojfnew.com](http://www.cardnojfnew.com)

# Environment & Land Management Journals

er.uwpress.org



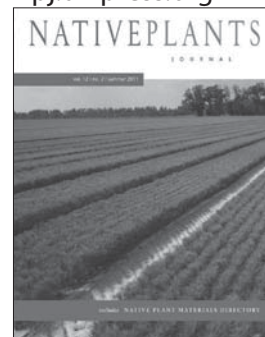
le.uwpress.org



lj.uwpress.org



npj.uwpress.org



## Ecological Restoration

*The Original Restoration Publication*

Edited by Steven N. Handel

ISSN: 1543-4060, e-ISSN: 1543-4079, 4/year

Online access includes all back issues

## Landscape Journal

*The official journal of the Council of Educators in Landscape Architecture*

Edited by Lance M. Neckar and David G. Pitt

ISSN: 0277-2426, e-ISSN: 1553-2704, 2/year

Online access includes all back issues

## Land Economics

Edited by Daniel W. Bromley

ISSN: 0023-7639, e-ISSN: 1543-8325, 4/year

Online access includes back issues, 2001–present

## Native Plants Journal

Edited by R. Kasten Dumroese

ISSN: 1522-8339, e-ISSN: 1548-4785, 3/year

Online access includes all back issues

The University of Wisconsin Press is pleased to offer a new package subscription to our environment and land management journals. The package includes both print and online editions of *Ecological Restoration*, *Land Economics*, *Landscape Journal*, and *Native Plants Journal* for a discounted rate of \$850 for institutions and \$275 for individuals. Online only subscriptions are also available, which include the entire back content of *Ecological Restoration*, *Landscape Journal*, and *Native Plants Journal*, and for *Land Economics* from 2001 to the current issue. Please visit [uwpress.wisc.edu/journals](http://uwpress.wisc.edu/journals) for more information.

Please visit us online at <http://uwpress.org> to:

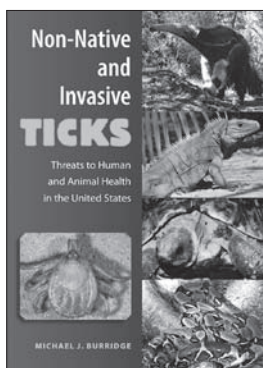
- 🔍 Search across full text, abstracts, titles, and tables of contents
- ✉ E-mail article information to a friend
- 📄 View most-cited articles list
- 📄 Sign-up for e-mail alerts
- 📄 Subscribe to the journal
- 📄 View tables of contents, abstracts, and references
- 📄 View most-read articles list
- 📄 View FREE sample issues

**THE UNIVERSITY OF WISCONSIN PRESS**  
JOURNALS DIVISION

1930 Monroe Street, 3<sup>rd</sup> Fl., Madison, WI 53711-2059 USA | [journals@uwpress.wisc.edu](mailto:journals@uwpress.wisc.edu)

Phone: (608) 263-0668 • Fax: (608) 263-1173 or (US only) (800) 258-3632 | <http://uwpress.wisc.edu/journals>



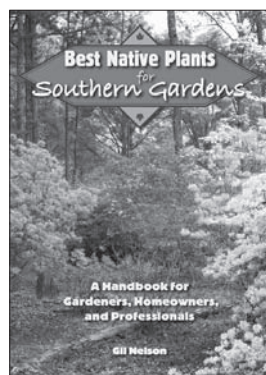


### Non-Native and Invasive Ticks

*Threats to Human and Animal Health in the United States*  
Michael J. BurrIDGE

Provides a detailed account of all non-native ticks introduced into the continental U.S., a concise review of the risks that these ticks pose to the health of humans and animals, and a list of methods for their control and eradication.

Hardcover \$125.00

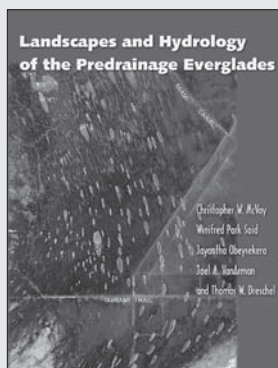


### Best Native Plants for Southern Gardens

*A Handbook for Gardeners, Homeowners, and Professionals*  
Gil Nelson

"Enough information and detail for professional landscapers and native ecosystem restorers, but it's an easy-enough read for the more casual gardener as well."  
—The Florida Native Plant Society

Paperback \$29.95



### Landscapes and Hydrology of the Predrainage Everglades

C. McVoy, W. Park Said, J. Obeysekera, J. VanArman, and T. Dreschel

*At last, a clear "original conditions" yardstick against which to measure restoration progress*

"Represents a landmark in the study of historical ecology in South Florida. It is a must-read for hydrologists, ecologists, policy makers, and managers involved in restoration ecology."—William F. Loftus, retired, Department of Interior

"A magnificent undertaking in historical detective work, or 'forensic ecology' in the authors' words. The book will totally reset our way of envisioning the Everglades."—Peter Stone, South Carolina Department of Health and Environmental Control

Hardcover \$85.00



**University Press of Florida**  
800.226.3822 | [www.upf.com](http://www.upf.com)

GAINESVILLE TALLAHASSEE TAMPA BOCA RATON PENSACOLA  
ORLANDO MIAMI JACKSONVILLE FORT MYERS SARASOTA

*Some see roots...*  
**we see performance.**

Tough sites require sure-fire success. That's why **results-driven managers depend on family-owned Forrest Keeling's RPM plants for better results in all applications...guaranteed.**

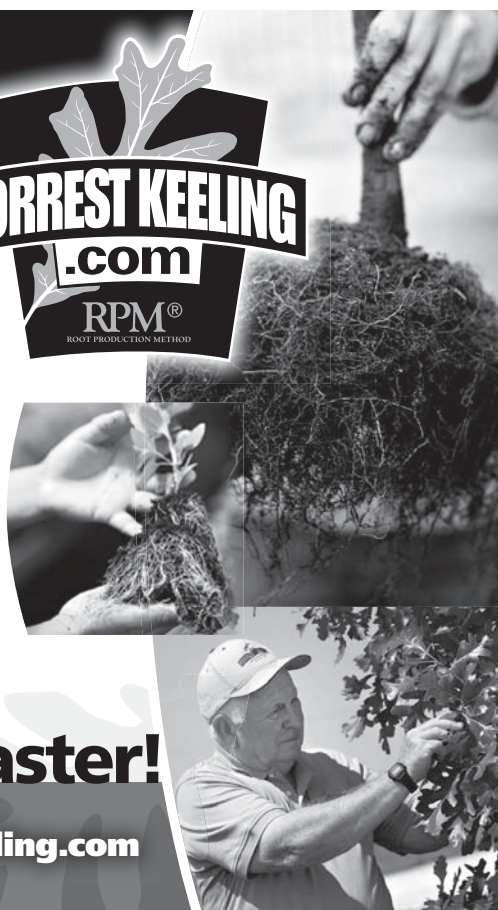
- **Superior**, appropriate seed source
- **Unrivaled root mass** and vigorous plant growth
- Over 95% survivability and faster maturation **saves time and money**
- **Broad selection** of trees, shrubs and perennials for one-stop shopping
- **Order online:** availability updated every three hours!



*from nature... to us... to you... faster!*

88 Forrest Keeling Lane • Elsberry, MO 63343  
**800-FKN-2401 • (573) 898-5571**

**[www.forrestkeeling.com](http://www.forrestkeeling.com)**

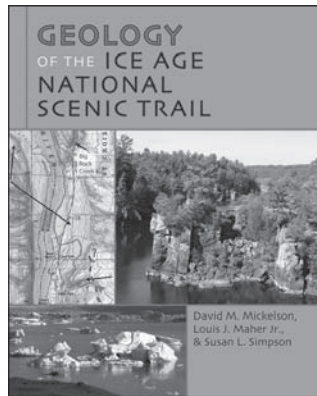




# A walk through Wisconsin's Ice Age

## Geology of the Ice Age National Scenic Trail

David M. Mickelson, Louis J. Maher Jr., and Susan L. Simpson



The nearly 1,200 mile Ice Age National Scenic Trail meanders across the state of Wisconsin through scenic glacial terrain dotted with lakes, steep hills, and long, narrow ridges. The authors bring this landscape to life by detailing geological features along each segment of the Ice Age Trail and help readers understand what Ice Age Wisconsin was like. Whatever your level of experience with hiking or knowledge of glaciers, this book will provide lively, informative, and revealing descriptions for a new understanding of the shape of the land beneath our feet.

Paper \$34.95, e-book \$19.95

At booksellers, or visit  
uwpress.wisc.edu



### UNITED STATES POSTAL SERVICE® (All Periodicals Publications Except Requester Publications)

1. Publication Title Ecological Restoration		2. Publication Number 1 5 2 2 - 4 7 4 0		3. Filing Date September 21, 2011	
4. Issue Frequency Quarterly		5. Number of Issues Published Annually Four		6. Annual Subscription Price Individual \$65, Institution \$245	
7. Complete Mailing Address of Known Office of Publication (Not printer) (Street, city, county, state, and ZIP+4®) University of Wisconsin Press, 1930 Monroe St., Madison, Dane County, WI 53711-2059				Contact Person Susan Kau Telephone (include area code) 608/263-0669	
8. Complete Mailing Address of Headquarters or General Business Office of Publisher (Not printer) Same as above.					
9. Full Names and Complete Mailing Addresses of Publisher, Editor, and Managing Editor (Do not leave blank) Publisher (Name and complete mailing address) Same as above. Editor (Name and complete mailing address) Dr. Steven N. Handel, Rutgers, The State Univ. of New Jersey, 1 College Farm Rd., New Brunswick, NJ 08901-1582 Managing Editor (Name and complete mailing address) Dr. Brooke Maslo, Rutgers, The State Univ. of New Jersey, 1 College Farm Rd., New Brunswick, NJ 08901-1582					
10. Owner (Do not leave blank. If the publication is owned by a corporation, give the name and address of the corporation immediately followed by the names and addresses of all stockholders owning or holding 1 percent or more of the total amount of stock. If not owned by a corporation, give the names and addresses of the individual owners. If owned by a partnership or other unincorporated firm, give its name and address as well as those of each individual owner. If the publication is published by a nonprofit organization, give its name and address.)					
Full Name Board of Regents		Complete Mailing Address Madison, WI 53706			
University of Wisconsin System					
11. Known Bondholders, Mortgagees, and Other Security Holders Owning or Holding 1 Percent or More of Total Amount of Bonds, Mortgages, or Other Securities. If none, check box <input checked="" type="checkbox"/> None					
Full Name		Complete Mailing Address			

12. Tax Status (For completion by nonprofit organizations authorized to mail at nonprofit rates) (Check one)

☒ Has Not Changed During Preceding 12 Months  
☐ Has Changed During Preceding 12 Months (Publisher must submit explanation of change with this statement)

PS Form 3526, September 2007 (Page 1 of 3 (Instructions Page 3)) PSN 7530-01-000-9931 PRIVACY NOTICE: See our privacy policy on www.usps.com

13. Publication Title Ecological Restoration		14. Issue Date for Circulation Data Below September, 2011	
15. Extent and Nature of Circulation		Average No. Copies Each Issue During Preceding 12 Months	No. Copies of Single Issue Published Nearest to Filing Date
a. Total Number of Copies (Net press run)		952	917
(1) Mailed Outside-County Paid Subscriptions Stated on PS Form 3541 (Include paid distribution above nominal rate, advertiser's proof copies, and exchange copies)		632	628
b. Paid Circulation (By Mail and Outside the Mail)			
(2) Mailed In-County Paid Subscriptions Stated on PS Form 3541 (Include paid distribution above nominal rate, advertiser's proof copies, and exchange copies)		0	0
(3) Paid Distribution Outside the Mails Including Sales Through Dealers and Carriers, Street Vendors, Counter Sales, and Other Paid Distribution Outside USPS®		0	0
(4) Paid Distribution by Other Classes of Mail Through the USPS (e.g. First-Class Mail®)		79	83
c. Total Paid Distribution (Sum of 15b (1), (2), (3), and (4))		711	711
d. Free or Nominal Rate Distribution (By Mail and Outside the Mail)			
(1) Free or Nominal Rate Outside-County Copies included on PS Form 3541		0	0
(2) Free or Nominal Rate In-County Copies Included on PS Form 3541		0	0
(3) Free or Nominal Rate Copies Mailed at Other Classes Through the USPS (e.g. First-Class Mail)		0	0
(4) Free or Nominal Rate Distribution Outside the Mail (Carriers or other means)		0	0
e. Total Free or Nominal Rate Distribution (Sum of 15d (1), (2), (3), and (4))		0	0
f. Total Distribution (Sum of 15c and 15e)		711	711
g. Copies not Distributed (See Instructions to Publishers #4 (page #3))		241	206
h. Total (Sum of 15f and g)		952	917
i. Percent Paid (15c divided by 15f times 100)		100	100
16. Publication of Statement of Ownership <input checked="" type="checkbox"/> If the publication is a general publication, publication of this statement is required. Will be printed in the December, 2011 issue of this publication. <input type="checkbox"/> Publication not required.			
17. Signature and Title of Editor, Publisher, Business Manager, or Owner <i>Susan Kau</i> Assistant Manager		Date September 21, 2011	

I certify that all information furnished on this form is true and complete. I understand that anyone who furnishes false or misleading information on this form or who omits material or information requested on the form may be subject to criminal sanctions (including fines and imprisonment) and/or civil sanctions (including civil penalties).

PS Form 3526, September 2007 (Page 2 of 3)



## Ecological Restoration, Inc.

- Wildlife Habitat Construction
- Wetland Construction
- Specialty Environmental Contracting
- Passive Wastewater Treatment
- Streambank Stabilization
- Stream Restoration/Relocation

194 Goodview Drive • Apollo, PA 15613

Phone: 724-727-3771 • Fax: 724-727-3778

Providing specialty contracting and subcontracting for:

- Wetland Construction
- Wildlife Habitat Construction
- Passive Wastewater Treatment
- Stream Reconstruction/Bank Stabilization
- Reforestation
- Pond Construction
- Erosion Control
- Environmental Remediation



194 Goodview Dr.  
Apollo, PA 15613  
Phone: 724-727-3772  
Fax: 724-727-3778

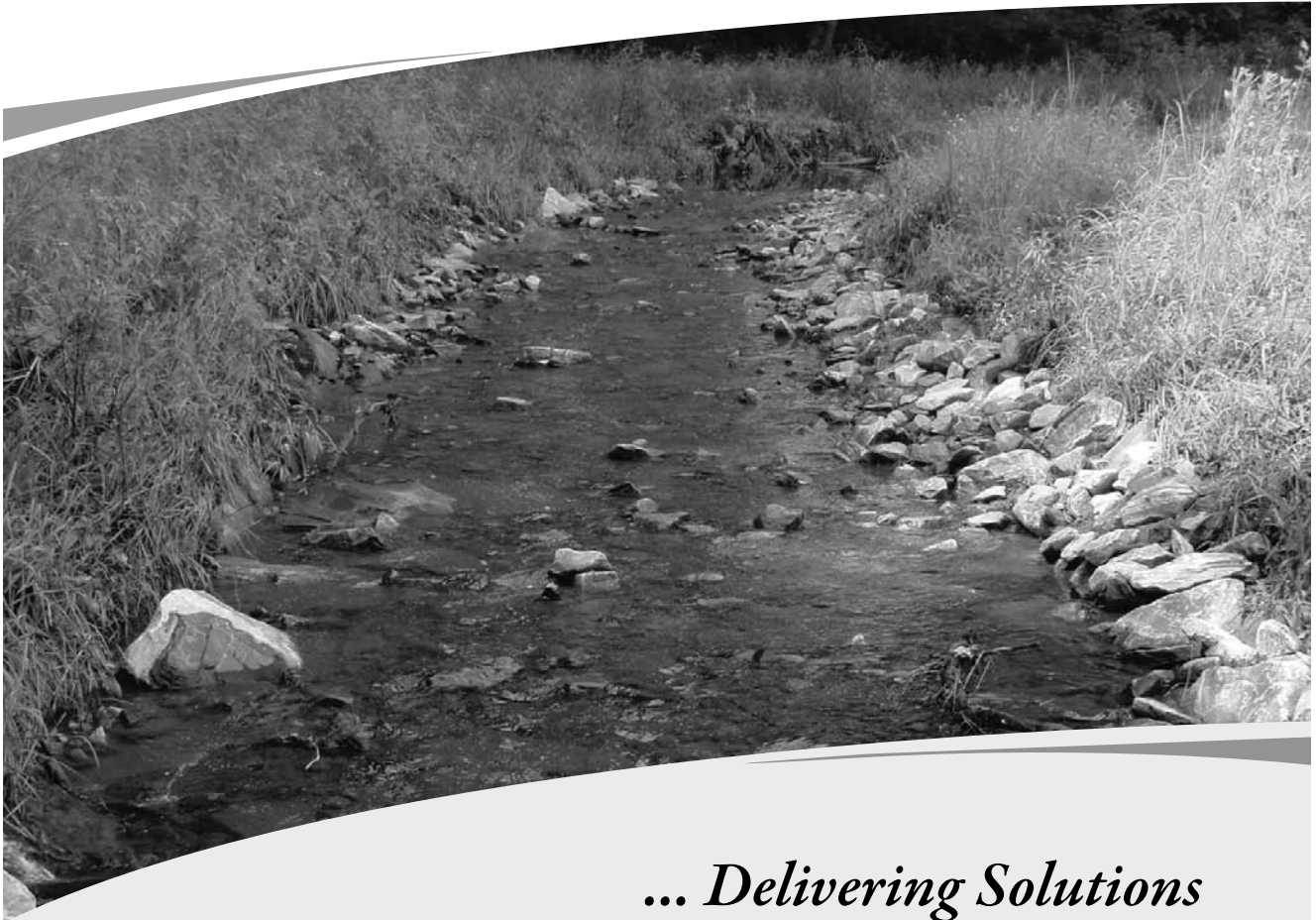
Your source for:

- Native Seed
- Quality Construction Materials
- Bioengineering Materials
- Erosion Control Supplies
- Native Restoration Plants
- Native Tree/Shrub Seedlings
- Native Wildflowers
- Landscaping Supplies
- Containerized Native Plants

## *Creating Value ...*

Abuse of valuable water resources comes in varying forms—runoff from agriculture and urban areas, damage from livestock and logging, and much more.

Baker's ecosystem restoration experts come face-to-face with these impacts and have achieved documented success in restoring waterways and improving water quality.



## *... Delivering Solutions*

Stream and Wetland Restoration • Mitigation Banking • Monitoring  
Watershed Management • Stormwater Management • Permitting

*Creating value by delivering  
innovative and sustainable solutions  
for infrastructure and the environment.*

**Baker**

To learn more about Baker's comprehensive services, visit [www.mbakercorp.com](http://www.mbakercorp.com) or contact Kevin Tweedy, P.E., at 919.463.5488 or [ktweedy@mbakercorp.com](mailto:ktweedy@mbakercorp.com).