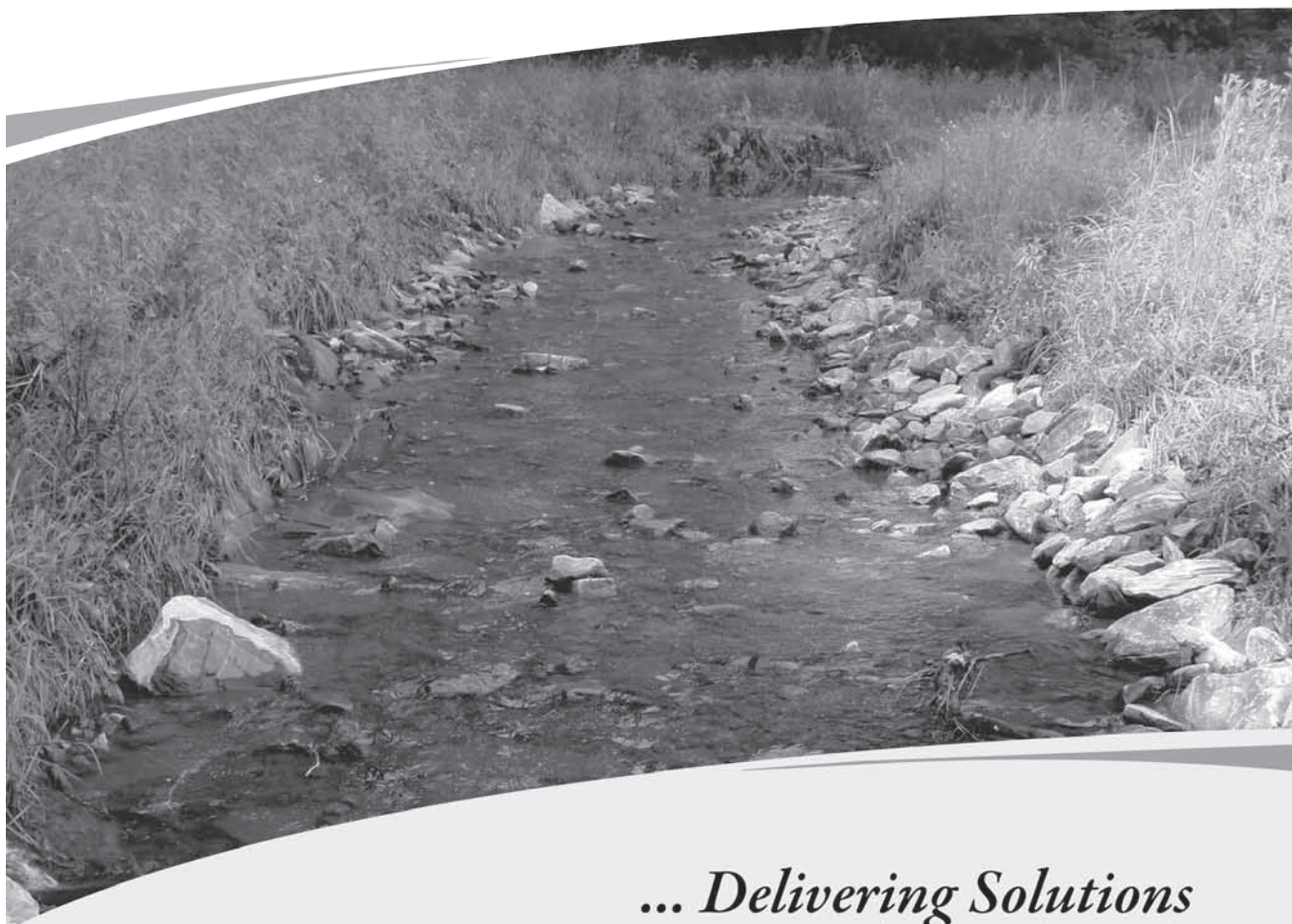


Creating Value ...

Abuse of valuable water resources comes in varying forms—runoff from agriculture and urban areas, damage from livestock and logging, and much more.

Baker's ecosystem restoration experts come face-to-face with these impacts and have achieved documented success in restoring waterways and improving water quality.



... Delivering Solutions

Stream and Wetland Restoration • Mitigation Banking • Monitoring
Watershed Management • Stormwater Management • Permitting

*Creating value by delivering
innovative and sustainable solutions
for infrastructure and the environment.*

Baker

To learn more about Baker's comprehensive services, visit www.mbakercorp.com or contact Kevin Tweedy, P.E., at 919.463.5488 or ktweedy@mbakercorp.com.

www.possibilityplace.com

Trees

Shrubs

Perennials

Possibility Place Nursery

Purveyor of Native Plant life

Contract Growing Available

7548 W Monee Manhattan Road
Monee, Illinois 60449

708-534-3988

Fax: 708-534-6272

*Some see roots...
we see performance.*

Tough sites require sure-fire success. That's why **results-driven managers depend on family-owned Forrest Keeling's RPM plants for better results in all applications...guaranteed.**

- **Superior**, appropriate seed source
- **Unrivaled root mass** and vigorous plant growth
- Over 95% survivability and faster maturation **saves time and money**
- **Broad selection** of trees, shrubs and perennials for one-stop shopping
- **Order online:** availability updated every three hours!



from nature...to us...to you... faster!

88 Forrest Keeling Lane • Elsberry, MO 63343
800-FKN-2401 • (573) 898-5571

www.forrestkeeling.com

DRIWATER

TIME RELEASE WATER

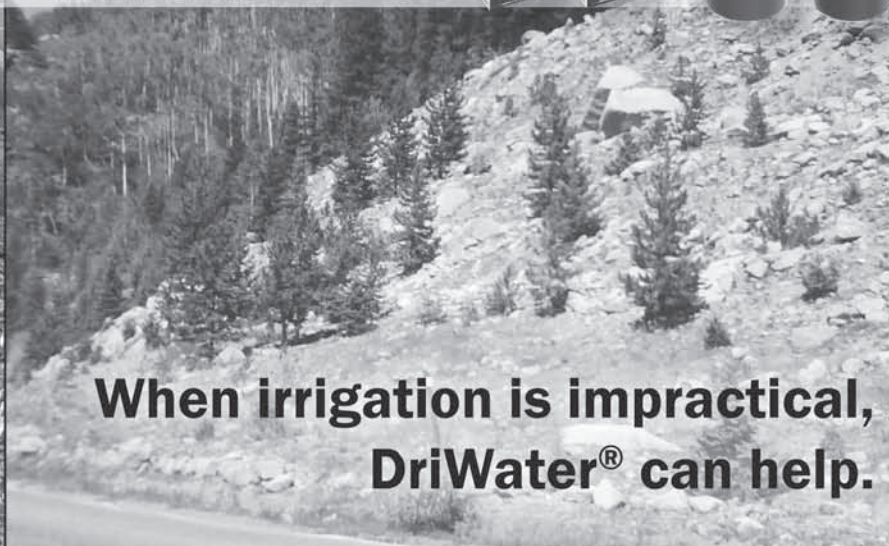
PLUS

TO

THRIVE

Initial Application

Plant Maintenance



**When irrigation is impractical,
DriWater® can help.**

Ideal for soil erosion projects & post-fire rehab

DriWater time release water gel is an innovative approach to remote planting irrigation and long-term watering. A non-polymer that supplies plants with water for up to 90 days. Safe, 100% degradable, consisting of 98% potable water and 2% food grade ingredients.

- Increases rooting up to 190%*
- Establishes trees in one growing season*
- Reusable, low profile, Tube and Gel packs for areas of high visibility
- Prolongs time between watering
- Non Polymer: does not compete for moisture
- Reduces transplant shock
- Supplies plants moisture at the root
- Avoids topical moisture reducing pests & weeds

Water where you need it.



800.DRIWATER | www.driwater.com

* Based on seasonal benefit planting study. For more information contact driwater@driwater.com



Spence Restoration Nursery

- *Native Plants and Seeds for Stormwater Applications*
- *Source Identified Ohio Valley and Southern Great Lakes Genotypes*
- *Large Vigorous Plants that Establish in Deeper water*
- *Mycorrhizal Inoculation for Success on Disturbed Sites*
- *Season Long Availability*
- *Downloadable seed mixes and specifications at www.spencenursery.com*

Spence Restoration Nursery

2220 East Fuson Road • Muncie, IN 47302

(765) 286-7154 • Fax (765) 286-0264

www.spencenursery.com

kevin@spencenursery.com

ZENTNER  ZENTNER

Land Planning and Restoration

Success of environmental restoration projects is measured by their performance over time. That success is a direct reflection of the skill of the restoration team—and its ability to solve complex ecological and regulatory issues. Over the last decade, Zentner and Zentner has managed over 500 restoration projects.

Our services include:

- Wetland Delineations
- Restoration and Mitigation Planning
- Biological Assessments
- Endangered Species: Section 7 and 2081 Approvals
- Regulatory Planning and Permitting
- Construction and Post Construction Monitoring

Contact us at:

Oakland: (510) 622-8110

ERNST SEEDS

Return to Natives!

Specializing in species for
uplands, wetlands, and
stream bank stabilization.

Contact us today!

TF: 800-873-3321

O: 814-336-2404

F: 814-336-5191

sales@ernstseed.com

www.ernstseed.com



Prairie Moon®
Nursery

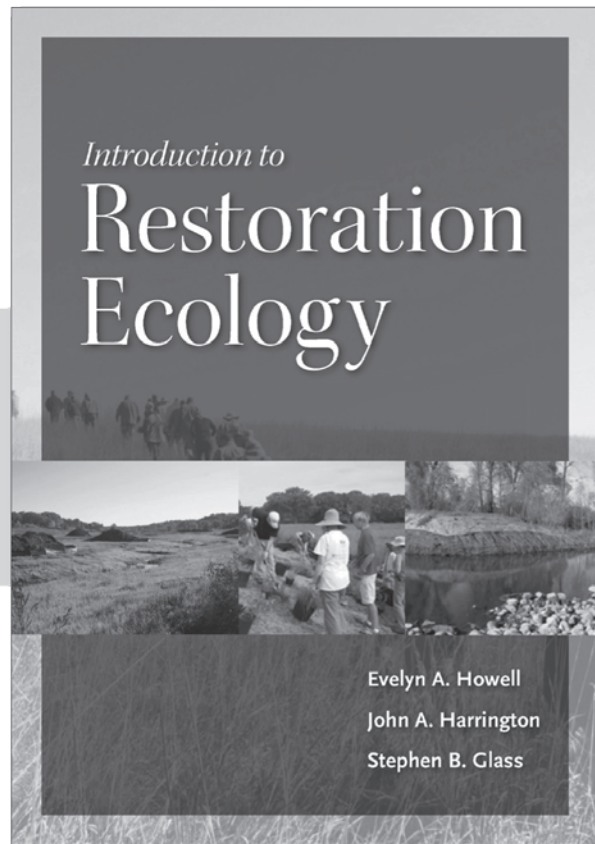
More than 600
*species of seeds
and plants native
to the midwest.*

www.prairiemoon.com

(866) 417-8156

PRAIRIE • WETLAND • SAVANNA • WOODLAND

Free full-color catalog and native plant growing guide!



A next-generation textbook for the next generation of environmental leaders

- Open and inviting design
- Color photos
- Figures, tables, and graphs
- Dedicated YouTube channel
- Instructor's Manual

Evelyn A. Howell, John A. Harrington, and Stephen B. Glass, recognized experts in the restoration community, have been teaching restoration ecology for more than 30 years.

Their classroom-tested approach, which blends methodology and problem-solving skills, gives students a strong conceptual framework that they can adapt to a variety of sites anywhere in the world. Both professors and students will appreciate the pedagogical structure, which includes

- Learning Objectives
- Food for Thought questions
- Key Concepts and Resources for Further Study
- Glossary
- Case Studies.

Restoration ecology is an emerging field and an interdisciplinary endeavor. This text will be useful for courses in landscape architecture, biology, environmental studies, ecology, botany, and planning, as well as restoration ecology.

Electronic examination copy, instructor's manual, table of contents, and more at www.IntroRestorationEcology.com

To order an exam copy, please visit islandpress.org/educators

SUPPLIER OF NURSERY AND
WETLAND STOCK TO THE TRADE



PIERSON NURSERIES, INC.

WE CARRY A FULL LINE OF

- NATIVES
- ORNAMENTALS
- GROUNDCOVERS
- SHADE & ORNAMENTAL TREES
- WOODY & HERBACEOUS WETLAND PLANTS
- SHRUBS
- PERENNIALS
- VINES

CONTRACT GROWING AVAILABLE

CALL FOR SAMPLES OR QUOTES OF
WETLAND & EROSION CONTROL FABRICS

24 BUZZELL ROAD
BIDDEFORD ME 04005
phone (207) 499-2994 (207) 282-7235
fax (207) 499-2912
e-mail: sales@piersonnurseries.com

CALL OR WRITE FOR OUR CATALOG



Joining Forces



Philip Williams Associates (PWA) has merged with ESA to provide clients with additional expertise in planning, science and environmental engineering. We work together to develop integrated solutions for coastal planning, fluvial restoration, flood management and sea-level rise.

www.esassoc.com
www.pwa-ltd.com

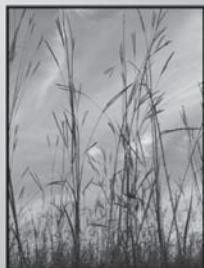


SHOOTING STAR NATIVE SEEDS

NATIVE PRAIRIE GRASS AND WILDFLOWER SEEDS

Production and sales of native seed
Installation and management of prairies and wetlands

Native seed mixes for CRP, CREP, DOT, BWSR,
residential, commercial, and public projects



20740 County Road 33 • Spring Grove, MN 55974
phone: 507.498.3944

ssns@springgrove.coop
www.shootingstarnativeseed.com

California Native Grasses, Wildflowers & Forbs

Site Specific & Source Identified | Seed Collection & Increase

Pacific Coast Seed INC.

Also distributing – AM 120 mycorrhizal inoculants, BioSol 7-2-1 Mix®,
Hydrostraw™ & fertilizers, mulches & soil stabilizers

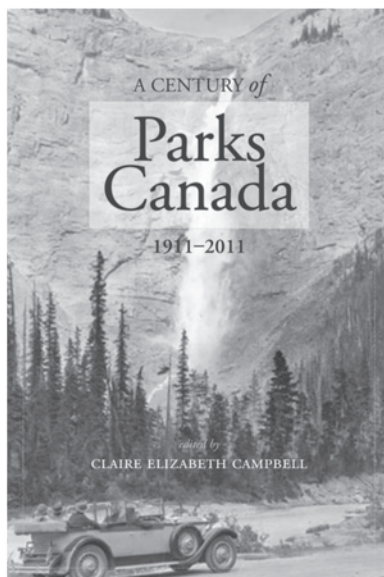
www.pcseed.com

(925) 373-4417 • Fax (925) 373-6855 | 533 HAWTHORNE PLACE • LIVERMORE, CA 94550



**Making a difference.
Making you think.**

**ENERGY, ECOLOGY
AND ENVIRONMENT
SERIES**



A Century of Parks Canada 1911-2011

edited by Claire Campbell

Publication Date: March 2011

When Canada created a Dominion Parks Branch in 1911, it became the first country in the world to establish an agency devoted to managing its national parks. Over the past century this agency, now Parks Canada, has been at the centre of important debates about the place of nature in Canadian nationhood, and relationships between Canada's diverse ecosystems and its communities. Today, Parks Canada manages over forty parks and reserves totalling over 200,000 square kilometres and featuring a dazzling variety of landscapes, profoundly affecting the way we, and the world, see our country.

In time to celebrate the centennial of Parks Canada, this vibrant new collection brings together academic and public historians from across the country, representing a host of different disciplines, including archaeology, cultural studies, environmental studies, and aboriginal history. Contributors address Parks Canada's long-standing struggles to encompass both preservation and use in places created for "benefit, education and enjoyment" of Canadians. These colourful, place-based accounts trace how the agency has designed, managed, and promoted national parks in response to public demand, political strategy, scientific debate, and environmental concern. As it navigated contests of territory, extraordinary geographical diversity, and the changing landscape of the modern Canadian state, Parks Canada has gradually defined national parks as both cultural landscapes and sites of ecological integrity.

Today Parks Canada is recognized as a global leader in the environmental challenges of protected places. Its history is a rich repository of experience, of lessons learned - critical for making informed decisions about how to sustain the environmental and social health of our national parks. By recognizing the relationship between human history and ecological sustainability, this collection represents the next generation of Canadian environmental history.

SERIES:
Energy, Ecology, and
Environment, No. 4
(ISSN 1919-7144)

6 x 9 | paper | **\$34.95**
35 b/w and colour photos
10 maps | bibliography
index

ISBN 978-1-55238-526-5

ALSO AVAILABLE IN THIS SERIES:

PLACES: Linking Nature, Culture and Planning

by Gordon Nelson and
Patrick Lawrence

ISBN 978-1-55238-254-7

\$44.95



Published in partnership with NiCHE
(Network in Canadian History and
Environment) <http://niche-canada.org/>

For order information visit us on-line at
www.uofcpress.com



"from the water ... to the woods"™

**Wetland Species
Storm Water Management
Restoration and Conservation**

Herbaceous Plants, Grasses, Vines
Grown in Deep Plugs

Visit our website for current availability:
www.NewMoonNursery.com

Contact us Toll Free:
phone 888-998-1951 ☀ fax 888-998-1952
975 Barretts Run Road, Bridgeton, NJ 08302



**SOUND
NATIVE
PLANTS**

**Ecological Restoration
Wetland Delineation & Mitigation
Shoreline Bioengineering**



Environmental consulting services including
wetlands, rain gardens, oak woodlands, shorelines,
habitat management plans and slope stabilization

Landscape contractors specializing exclusively in
restoration, licensed in Washington & Oregon

Wholesale native plant nursery with extensive
selection of Pacific Northwest trees, shrubs,
herbaceous perennials and emergents

PO Box 7505, Olympia, WA 98507
PH (360) 352-4122 FAX (360) 867-0007
www.soundnativeplants.com
WA #SOUNDNP017BL OR LCB #8781



**Midwest
Grower**
**Custom Seed
Mixes and
Native Plants**
• DOT
• Conservation
• Stormwater
Management
• Erosion
Control
• Habitat

www.agrecol.com



ecosolutions@agrecol.com

Agrecol LLC
10101 N. Casey Rd.
Evansville, WI
53536

Call 608-223-3571
Fax 608-884-4640

© 2010 Agrecol LLC



Customized Seed Mixes • Native Seed and Plugs
Specific Genotype Propagation • Contract Growing

jfnew.nursery.sales@cardno.com 574 586 2412 www.cardnojfnew.com

Where Horticulture Meets Ecology™

Native Plant Solutions for Ecological Landscapes

North Creek is proud to offer a broad selection of eastern US native perennial, ornamental grass, fern and vine

Landscape Plugs™.

Our native plants are ideal for stormwater management, landscape restoration, soil stabilization, meadow & rain garden plantings.

**Contract growing option available upon request*



www.northcreeknurseries.com | info@northcreeknurseries.com
388 North Creek Road | Landenberg, PA 19350 | 1.877.ECO.PLUG

Prairie Restorations, Inc.

Restoring Prairies, Wetlands, Shorelines and Woodlands since 1977

Services Including:

Landscape Design and Installation
Invasive Species Control
Prescribed Burning
Technical and Design Consulting

Prairie Restorations, Inc.

P.O. Box 327
Princeton MN 55371
(800) 837-5986

www.prairieresto.com

Products Including:

Local Genotype Native Seed and Plant Materials
Plugs, Four Inch Pots and One Gallon Containers
Trees and Shrubs
Native Sod Flats





Balance Restoration Nursery

*"Our specialties are wetland/riparian species,
expedited rush orders, and knowledgeable
customer service."*

*Wholesale Bare-Root
Wetland/Riparian*

balancenursery@yahoo.com

Phone 541-942-5530

Fax 541-942-7265

Availability on Facebook



**Louisiana
Forest Seed
Company, Inc.**



TREE & SHRUB SEEDS

CALL FOR OUR FREE BROCHURE!

303 Forestry Rd. • Lecompte LA 71346

Voice: 318-443-5026 • fax: 318-487-0316

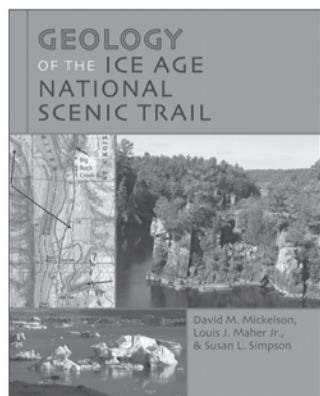
E-mail: info@lfsco.com

Photos: Chuck Meyers, Dept of Interior, Office of Surface Mining; USFS

A walk through Wisconsin's Ice Age

Geology of the Ice Age National Scenic Trail

David M. Mickelson, Louis J. Maher Jr., and Susan L. Simpson



The nearly 1,200 mile Ice Age National Scenic Trail meanders across the state of Wisconsin through scenic glacial terrain dotted with lakes, steep hills, and long, narrow ridges. The authors bring this landscape to life by detailing geological features along each segment of the Ice Age Trail and help readers understand what Ice Age Wisconsin was like. Whatever your level of experience with hiking or knowledge of glaciers, this book will provide lively, informative, and revealing descriptions for a new understanding of the shape of the land beneath our feet.

Paper \$34.95, e-book \$19.95

At booksellers, or visit
uwpress.wisc.edu

UNIVERSITY OF
WISCONSIN
PRESS

— 1936 – 2011 —

Celebrating 75 Years



**Call, Fax or Write for
Free Catalog Today!**

**Toll Free
877
817-5325**

**23200 Hurd Road
Tampico, IL 61283
(815) 438-2220
Fax: (815) 438-2222**

IL DBE Certified
**WHOLESALE
MIDWESTERN NATIVE
SEEDS AND PLANTS**

Native Grasses, Sedges, Wildflowers, and Wetland Shrubs.

Seeds and plants for natural landscaping, wildlife habitat,
reclamation, roadsides, wetlands, and
streambank stabilization.

Upper Midwest regional seed mixes
based on local ecosystems.

IDOT and Illinois Tollway native mixes,
and custom seed mixes available.

Local ecotype and regionally adapted seed

Fax your custom seed mixes to 815-438-2222.

Plugs and larger materials - Contract growing available.

Over 20 years experience in restoring Midwest landscapes

**granite
SEED**
and erosion control

**The largest selection and highest quality native seed in the western
United States, custom blended to your project's unique specifications.**



**Restoration presents real challenges.
Granite Seed is ready to help.**

**801-768-4422
www.graniteseed.com**

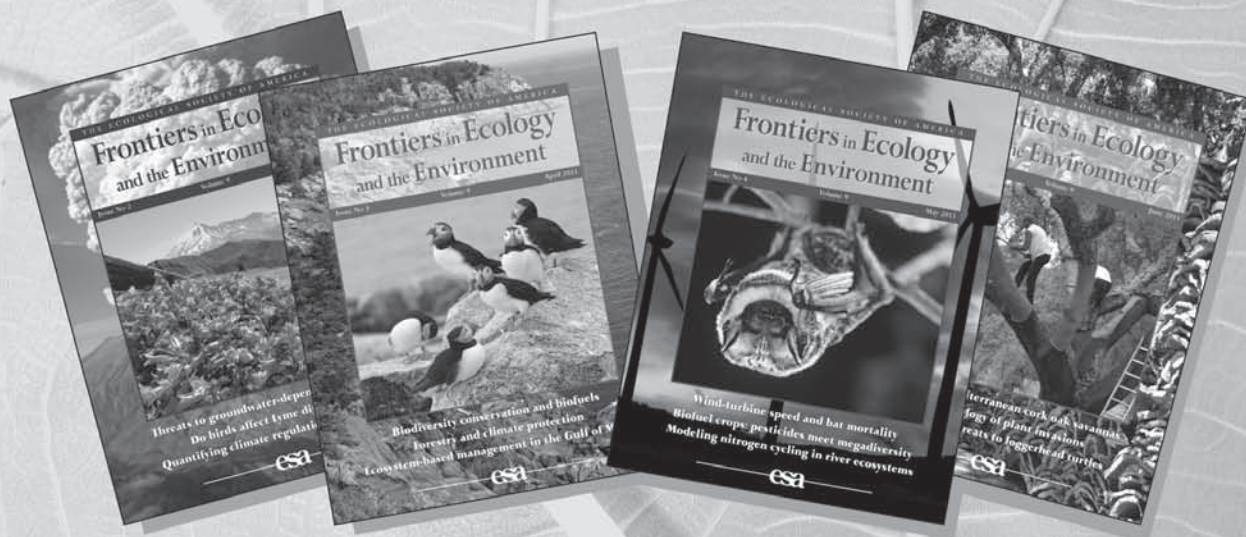
© Granite Seed

MAKING A BIG IMPACT

Frontiers in Ecology and the Environment

With its timely, cross-disciplinary science, accessible writing style, four-color graphics and visually appealing format, *Frontiers in Ecology and the Environment* is read by scientists from a wide range of disciplines, as well as by policy makers, resource managers, educators, and students.

Impact factor: 6.922



**Visit: www.frontiersinecology.org
and see for yourself.**

Frontiers is different from other scientific journals, but delivers the same high-quality, peer-reviewed literature as the best of them.

Frontiers is a benefit of membership of the Ecological Society of America. Membership fees range from \$27–\$104.

And at only \$256–\$287 for a US institutional subscription, it's great value for your money.

For more information go to

**http://www.esa.org/member_services/join_renew.php
to join ESA and receive *Frontiers***



1990 M Street NW, Suite 700, Washington, DC 20036

Telephone: +1 202 833 8773 Fax: +1 202-833-8775