

Bibliography of Repeat Photography Evaluating Landscape Change

Compiled and Annotated, with an Introduction by Garry F. Rogers, Harold E. Malde, and Raymond M. Turner

Repeat photography is the practice of finding the site of a previous photograph, reoccupying the original camera position, and making a new photograph of the same scene in order to evaluate landscape change over a period of time. Rogers, Malde, and Turner have compiled published contributions in repeat photography to provide a perspective on the ways in which it has been used and to make this body of knowledge available to others. Since no other such published bibliography is known to exist, this work will be of immense value to a variety of research scientists.

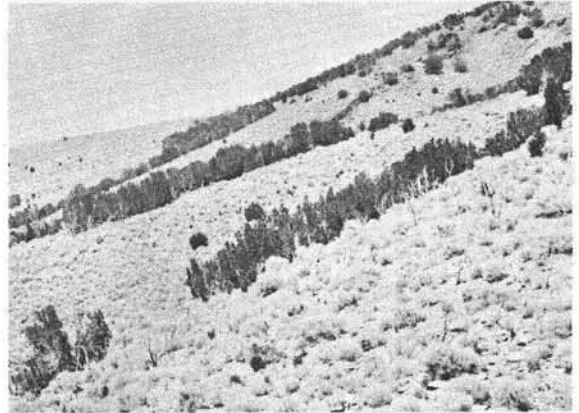
This bibliography, with more than 400 entries, is a compilation of all published material up through 1981, with some 1982 and 1983 publications included. The focus is on publications in the English language that mainly refer to research in the western United States. As an aid to newcomers in this research field, a list of selected photographic archives in the United States that have large collections of landscape photographs appears in the Introduction. The annotations provide information on the general subject of the cited report, location, number of matched photographs, and the dates or time span for the photographs. An index provides a comprehensive list of subjects covered by the entries and give the names of photographers who have been credited in a report when the photographer is not one of the authors.

ISBN 0-87480-239-3

176 pages, photographs, notes, index. \$12.50

SPECIAL 20% DISCOUNT

when you clip or photocopy this advertisement and send it with your order. (Bibliography, \$10.00; Then and Now, \$8.00)



Also of Interest

Then and Now

A Photographic History of Vegetation Change in the Central Great Basin Desert

By Garry F. Rogers

159 pages, photos, refs. ISBN 0-87480-206-7
Paper, \$10.00s



University of Utah Press

Dept. 125M Salt Lake City, Utah 84112



north american

prairie

J. E. WEAVER

North American Prairie tells the story of the variety of prairie inhabitants; the composition of its communities; the internal struggles for domination; the extensive and intricate root systems; and the battles of the prairie as a whole against the changing factors of the environment.

This is **not** a reprint. This is a unique opportunity to own the first edition (1954), unused, and with the original dust cover. Due to extremely limited quantities, please order only one book per customer. Send \$25 plus \$1 for shipping to:

Kelly Roberts
610 No. 35th
Lincoln, Nebraska 68503

Steven I. Apfelbaum, M.S.
Research and Consulting Ecologist

Aquatic, Wetland, and Terrestrial System Ecological Studies, assessments, monitoring, management, and restoration and reclamation. Environmental Impact studies, statements; permitting, project evaluations and design; legal discovery.

Applied Ecological Services
Rural Route 1, Box 130
Juda, Wisconsin 53550
(608) 897-8547

FREE CATALOG

TREES, SHRUBS & GROUND COVERS

A complete listing of Evergreen and Hardwood Seedlings and Transplants, Landscape Ornamentals, Rooted Cuttings, Ground Covers, Container-Grown Plants, plus money-saving Special Offers.

**BUY DIRECT
from GROWER**

Please send **FREE CATALOG** to:

NAME _____

ADDRESS _____

CITY _____

STATE _____ ZIP _____



MUSSER

Box 12X-A, Indiana, Pa. 15701

Prairie Ridge Nursery

Joyce Ann Powers, Owner

Native Plants and Seeds

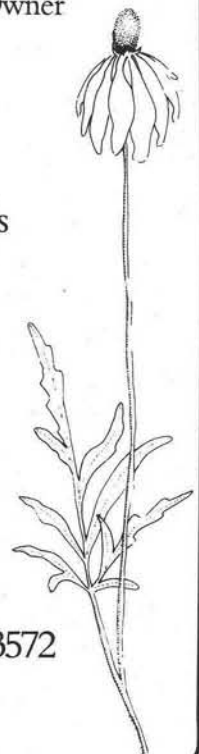
Consulting Service

Prairie Restorations

RR2 9738 Overland Road

Mt. Horeb, Wisconsin 53572

Phone: (608) 437-5245



*For those who
love and wish to
preserve our
natural heritage...*



When the Water Smokes *A Peltier Creek Chronicle*
by **BOB SIMPSON**

"... too few people think of the back rivers, of the little bays and estuaries, as parts of our real wilderness system. Not formally designated, not even legally recognized, they are still equally—perhaps even more—valuable to man, besides being more accessible than what we commonly think of as wilderness..."

"The pearly grayness of dusk faded to black. Overhead the Big Dipper Handle stood pointing to the southern sky, its summer stance. Gradually it would swing more and more to the west, and a new season would replace summer. Perhaps in the long history of the earth it doesn't matter, as archaeologists uncover the remains of our systems in a few thousand years. Will they laugh, or will they wish that they, too, could have lived in this century? It depends mainly on us, and which philosophy we express when we refer to GNP. Do we mean Gross National Product or Glacier National Park?" —from *When the Water Smokes*

Bob and Mary Simpson live at the edge of Peltier Creek in coastal North Carolina. *When the Water Smokes* is an account of a year ashore and afloat, exploring the intricate wonders of creeks and waterways, wetlands and beaches. Close observation of nature and its creatures, the restoration and fitting-out of an old wooden fishing boat, shrewd comments on nature's delicate ecological balance and the need to cherish our environmental heritage—these have earned Bob Simpson's book the praise of readers everywhere.

The naturalist, the environmental scientist, the boatman, the fisherman, all who enjoy the outdoors will draw delight and wisdom from this remarkable chronicle.

"Some of the best nature writing you will read in a long time." —*Sports Illustrated*

"Will appeal to everyone who enjoys fishing, wildlife and the great outdoors." —*Publishers Weekly*

"The best nature writing I've ever read. It's a small and funny and sometimes sad masterpiece of one average Joe's life on the coast, the comings and goings of the seasons and friends human, mammal, fish and fowl, and the sad saga of man's endless assault on the natural world." —*St. Petersburg (Fla.) Times*

SECOND PRINTING

\$15.95 from your bookseller or order directly from
ALGONQUIN BOOKS
Box 2225N
Chapel Hill, N.C. 27515

Please send _____ copies of *When the Water Smokes*
at \$15.95 each plus \$1.50 postage.

Check or money order for \$ _____ enclosed.

Charge my VISA MasterCard account # _____.

Exp. Date _____

Signature _____

N.C. residents add 4% sales tax

Name: _____

Address: _____

Native Plants and Seeds

Prairie Nursery



P.O. Box 365

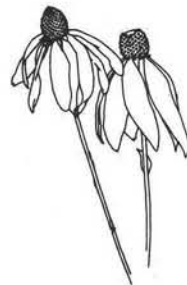
Westfield, WI 53964

(608)-296-3679

Restoration & Management Notes

Founded: 1981

Editor: William R. Jordan, III



... restoration and management of prairies, forests, wetlands and other plant and animal communities. This journal, founded in 1981, is edited at the University of Wisconsin Arboretum.

ISSN 0733-0707

RATES

Individuals: \$10/yr.

(must prepay)

Institutions: \$20/yr.

Foreign subscribers add \$3

for regular postage, or \$7

for Airmail delivery

REPLY TO

Journal Division

The University of Wisconsin Press

114 North Murray Street

Madison, Wisconsin 53715

USA

(608) 262-4952

Prairie Seed Source



Specialists in Prairie Restoration

P.O. Box 83 R

North Lake, Wisconsin 53064

Prairie Seed Source is dedicated to the preservation and proliferation of southeastern Wisconsin prairie genotype and related ecosystem members.

We offer over 140 species by seed only. Our catalog lists genus and species, common name, color of bloom, moisture preference(s), time of bloom, mature height and an outline sketch of each species.

We also offer slide presentations, prairie management and a selection of merchandise related to prairie.

We sell bulk seed in our region only. Packets of seed (for garden plots) and merchandise, anywhere.



CATALOGS: \$1.00.



Full-color cover
105 line drawings with
lavender borders, suitable
for hand painting
256 pages, 7" x 10"
Hardcover
\$16.95

Wildflower Folklore will bring years of
pleasure to everyone who loves nature.
A wonderful gift . . . a lasting keepsake!

• A Selection of Organic Gardening Book Club

Here are 105 favorite wildflowers, each illustrated with a botanically accurate drawing. You'll find both the common and scientific names, information on where and when the flowers grow and instructions on how to grow them. Discover the wonderfully particular details that make up each flower's personality . . . how it got its name; what medicinal value it has; its romantic language; pioneer and Indian uses; superstitions, legends and stories about it . . . and much more!

W WHITE FLOWERS

cells to rise and condense and on long growing stems produce a great number of seeds each year.

The chickweed is regarded as a nuisance in Europe, because it is a very good substitute for starch. When gathered in early spring before flowering it is more tender than any other wild green and is a good source of vitamins A and C.

Many ancient herbals listed chickweed as a remedy for both and attributed its effectiveness to England or was used to reduce fever.

COMMON NAME dairy
FAMILY Compositae (Daisy)
GENUS *Chrysanthemum*
SPECIES *leucanthemum*

DESCRIPTION The stem of the daisy is upright or slightly branched and smooth or slightly hairy. The leaves at the base are round-shaped and deeply notched. The flower heads are at the end of the stem and on stalks. There are one to two inches across and have centers to thirty white ray flowers and bright yellow disks or centers.

HERBICIDAL common in fields, meadows, waste places, and roadsides.
PERIOD April through August

The English had several common names for this plant. The name daisy comes from "day's eye" because the flowers close up at night. Other old English names include

DAISY W

Chickweed has the habit and predicting the weather. If the chickweed blooms fully and holds the seeds long, there will be no rain for at least five hours. If the flowers that get no rain remain.

For positive identification of the plant, look through a magnifying glass at the base of the stem. A row of four pairs of opposite leaves and then another row and give up the other side of the stem to the next pair of leaves and so on.

Laura C. Martin has long been interested in nature. With a degree in botany, she has taught high school science and been a teacher/naturalist at Georgia's Callaway Gardens. She lectures and conducts workshops for garden clubs and societies throughout the Southeast, writes articles for newspapers and magazines, and is very active in conservation and restoration projects.

Please send me _____ copy(ies) of *Wildflower Folklore* @\$16.95 each.
My check for _____ is enclosed.
Charge my Visa _____; MasterCard _____.
Card # _____, Exp. date _____.
Send to: _____

I understand my money is totally refundable if I am not entirely satisfied.

Retail discounts and information available from Pat McCulloch, The East Woods Press, 429 East Blvd., Charlotte, NC 28203, (704) 334-0897. For orders only, call toll free (800) 438-1212; in NC (800) 532-0476.

THE EAST WOODS PRESS
429 East Boulevard, Charlotte, NC 28203

