

# ISLAND PRESS

## EXPANDING PARTNERSHIPS IN CONSERVATION



EDITED BY JEFFREY A. MCNEELY

**Expanding Partnerships in Conservation**  
*Edited by Jeffrey A. McNeely*  
 IUCN—The World Conservation Union

Expanding Partnerships in Conservation explores how new and stronger partnerships can be formed between managers of protected areas and other

sectors of society. It describes a range of activities currently underway in many parts of the world that are intended to improve conservation efforts at the international, national, and local level.

368 pages • figures, tables, index • 1995  
 Paperback: \$34.95 ISBN: 1-55963-351-4

## Collaborative Planning for Wetlands and Wildlife

—KENNETH A. SALVESSEN



Edited by Douglas R. Porter and David A. Salvesen  
 Foreword by John De Grove

## Collaborative Planning for Wetlands and Wildlife Issues and Examples

*Edited by Douglas R. Porter and David A. Salvesen*  
 Foreword by John De Grove

Collaborative Planning for Wetlands and Wildlife builds on past experience to propose guidelines for more effective planning, and presents numerous case studies

that demonstrate how different communities have creatively reconciled problems between developers and environmentalists.

352 pages • photos, maps, figures, tables, index • 1995  
 Paperback: \$29.50 ISBN: 1-55963-287-9

## The Grizzly Bears of Yellowstone



John J. Craighead, Jay S. Sumner, and John A. Mitchell

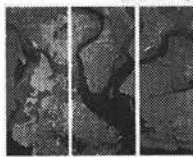
**The Grizzly Bears of Yellowstone Their Ecology in the Yellowstone Ecosystem, 1959-1992**  
 John J. Craighead, Jay S. Sumner, and John A. Mitchell  
 Craighead Wildlife-Wildlands Institute

The culmination of the research conducted by the elite team led by the Craighead brothers, the book brings together years of data detailing the natural history, reproductive biology, social behavior, population dynamics, and habitat use patterns of the grizzly bear population in the Yellowstone ecosystem from 1959 through 1992, as well as the results of complementary studies conducted by John Craighead in wilderness areas of Montana and Alaska.

560 pages • 1995 • 88 figures, 6 color figures, 202 tables, 146 b&w photos, 69 color photos, 448 references, over 1,800 index entries

## Forest Patches in Tropical Landscapes

EDITED BY JOHN SCHELHAS AND RUSSELL GREENBERG



**Forest Patches in Tropical Landscapes**  
*Edited by John Schelhas and Russell Greenberg*

This volume brings together world-renowned scientists and conservationists to address the biological and socioeconomic value of forest remnants and to examine practical efforts to conserve those remnants. An outgrowth of a year-long

study by the policy program at the Smithsonian Migratory Bird Center.

375 pages • tables, figures, maps, photos, satellite images, index • February 1996

Hardcover: \$50.00 ISBN: 1-55963-425-1  
 Paperback: \$30.00 ISBN: 1-55963-426-X

## Restoring Diversity

—REED F. NOSS

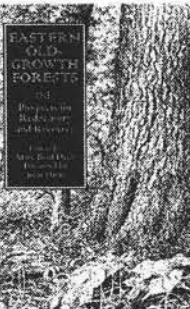


**Restoring Diversity Strategies for Reintroduction of Endangered Plants**  
*Edited by Donald A. Falk, Constance I. Millar, and Margaret Olwell*  
 Foreword by Reed F. Noss  
 Center for Plant Conservation

Restoring Diversity examines such topics as the strategic and legal context for rare plant restoration; the

biology of restoration; and the use (and misuse) of mitigation in rare plant conservation. It presents model guidelines for the reintroduction of endangered plants along with case studies from across the United States.

400 pages • tables, figures, photos, index • March 1996  
 Hardcover: \$39.95 ISBN: 1-55963-296-8  
 Paperback: \$27.50 ISBN: 1-55963-297-6



**Eastern Old-Growth Forests Prospects for Rediscovery and Recovery**  
*Edited by Mary Byrd Davis*  
 Foreword by John Davis

Authoritative essays from leading experts examine the ecology and characteristics of eastern old growth, explore its history and value—both ecological and cultural—and make

recommendations for its preservation. Also included is a discussion of the importance of ongoing research of these valuable ecosystems.

420 pages • tables, figures, photos, illustrations, maps, index • February 1996  
 Hardcover: \$50.00 ISBN: 1-55963-408-1  
 Paperback: \$24.95 ISBN: 1-55963-409-X

CALL 1-800-828-1302

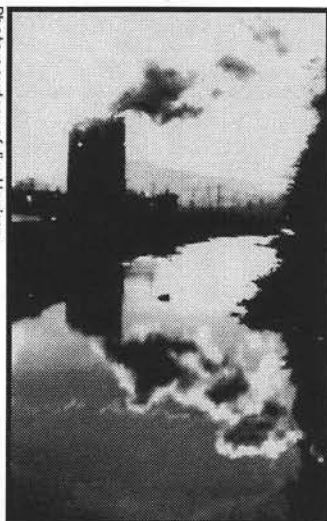
Island Press • Box 7, Dept. 4RMN2, Covelo, CA 95428 • 707/983-6432

# Troubled Waters

CHAMPION INTERNATIONAL AND  
THE PIGEON RIVER CONTROVERSY

*Richard A. Bartlett*

Photo courtesy of Jim Harrison



In dispassionate yet disturbing detail, this book chronicles the saga of an Appalachian stream, the paper company that polluted it, and the citizens who have struggled to force its cleanup.

Richard A. Bartlett recounts the full history of the Pigeon River controversy, which began in 1908 when the corporate giant now known as Champion International opened a pulp and paper mill near Canton, North Carolina. He pays special attention to the years since 1985, during which grass-roots environmental activists have mounted a sustained drive against the ongoing pollution.

376 pages, illustrations  
ISBN 0-87049-887-8, \$35.00 cloth  
ISBN 0-87049-888-6, \$17.95 paper



**The University of Tennessee Press**

KNOXVILLE 37996-0325

## Also of Interest

### Conscience of a Conservationist

SELECTED ESSAYS  
*Michael Frome*  
296 pages, illustrations  
ISBN 0-87049-602-6, \$29.95

### Promised Land

ADVENTURES AND ENCOUNTERS  
IN WILD AMERICA  
REVISED EDITION  
*Michael Frome*  
360 pages, illustrations  
ISBN 0-87049-851-7, \$19.95 paper

### Strangers in High Places

THE STORY OF THE GREAT  
SMOKY MOUNTAINS  
EXPANDED EDITION  
*Michael Frome*  
496 pages, illustrations  
ISBN 0-87049-806-1, \$16.50 paper

Shipping and handling: \$3.50 for first book;  
\$.75 for each additional book

## Now Available...

### DISEASES OF TURFGRASSES

*by Houston B. Couch*

3rd Ed. 1995

ISBN 0-89874-211-0

434 pp.

\$84.50

Long recognized as the basic reference on turfgrass pathology, *Diseases of Turfgrasses* has been updated for the first time in twenty years. The new edition contains the most recent comprehensive treatment of diseases of turfgrass and is the most complete reference currently available. The book has been designed as a practical manual for all those engaged in turfgrass management and is specifically directed to plant pathologists and agronomists. It can be used both as a thorough text and scientific reference manual. Over 250 photographs, including 180 in color, illustrate the full range of symptoms for all major diseases. The new format gives a step-by-step understanding of the nature and control of senectopathic disorders, anaerobiosis, and root dysfunctions. It also contains a profile of each fungicide currently available for use in turfgrass disease control programs. The most valuable reference available to anyone with an interest in turfgrass.

### MANAGEMENT OF LAKES AND PONDS

*by George W. Bennett*

2nd Ed. 1970, Reprint 1983

ISBN 0-89874-626-4

398 pp.

\$46.50

### INVISIBLE NETWORKS: Exploring the History of Local Utilities and Public Works

*by Ann Durkin Keating*

Orig. Ed. 1994 (Exploring Community History Series)

ISBN 0-89464-871-3

180 pp.

\$24.50

**COMPLETELY REVISED  
FOR THE FIRST TIME  
IN 20 YEARS!**

### ORNAMENTAL GRASSES AND GRASSLIKE PLANTS

*by A. J. Oakes*

Orig. Ed. 1990, Reprint 1993 w/corrections

ISBN 0-89464-826-8

624 pp.

\$77.50

Call or write for more information  
on these and other titles or to receive our  
**FREE** catalog.



**KRIEGER PUBLISHING COMPANY**

P.O. Box 9542 • Melbourne, FL 32902-9542

(407) 724-9542 • Direct Order Line (407) 727-7270 • FAX (407) 951-3671



# An Important New Book on Protecting the Environment Against the Effects of Mining

**JUST  
PUBLISHED**

## ENVIRONMENTAL EFFECTS OF MINING

By E.A. Ripley, R.E. Redmann, and A.A. Crowder

Research funded by the Centre for Resource Studies, Queen's University, Kingston, Ontario, Canada

### Key Features:

- Authoritative and up-to-date, with expert information fully peer reviewed.
- Presents a clear and readable outline of techniques for the extraction and processing of non-petroleum minerals and a basic understanding of ecosystems, their structure, elements, and classification.
- Provides a clear description of the chemical and physical processes by which the environment and the activities of mineral producers interact and offers contemporary perspectives on how mining/mineral processing and ecosystems can co-exist.
- Explains how every mining operation can tailor its environmental management program to local conditions.
- Describes contemporary methods for damage prevention and restoration for both new, older, and abandoned sites.

---

This important new book contributes to a growing understanding of the practical matters of protecting the environment in the course of activities that are intrinsically harmful.

---

### 11 Comprehensive Chapters

- Mineral Extraction
- Ecosystems
- Environmental Impact
- Prevention, Reclamation, and Rehabilitation
- Sulphides
- Gold and Silver
- Uranium
- Ore
- Carbon Products: Coal, Peat, Graphite, and Diamonds
- Potash and Other Salts
- Industrial Minerals

\$65.00, plus \$7.95 s/h  
Aug. 1995, ISBN 1-884015-76-X

MAIL, FAX, OR PHONE YOUR ORDER TO:

**S<sup>t</sup>  
L**

**St. Lucie Press**

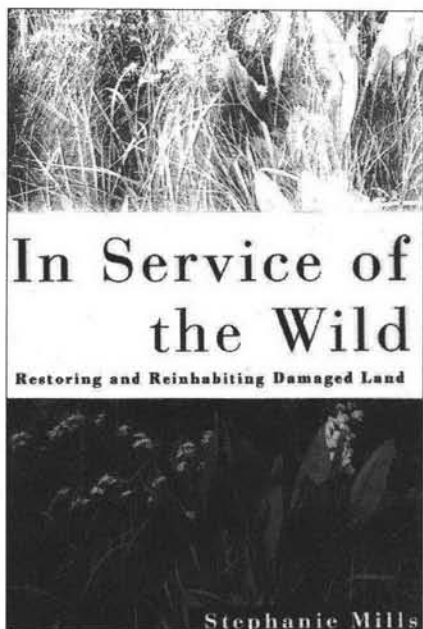
100 E. Linton Blvd, Suite 403B, Delray Beach, FL 33483

TEL: (407) 274-9906 FAX: (407) 274-9927

RMN95



# THE BEACON APPROACH



## IN SERVICE OF THE WILD

### Restoring and Reinhabiting Damaged Land

*Stephanie Mills*

"An uncommonly clear, commonsensical argument for rehabilitating damaged landscapes and moving toward what the author calls the 'future primitive.' ... Good writing and good thinking make this book fuel for long reflection."

—*Kirkus Reviews*

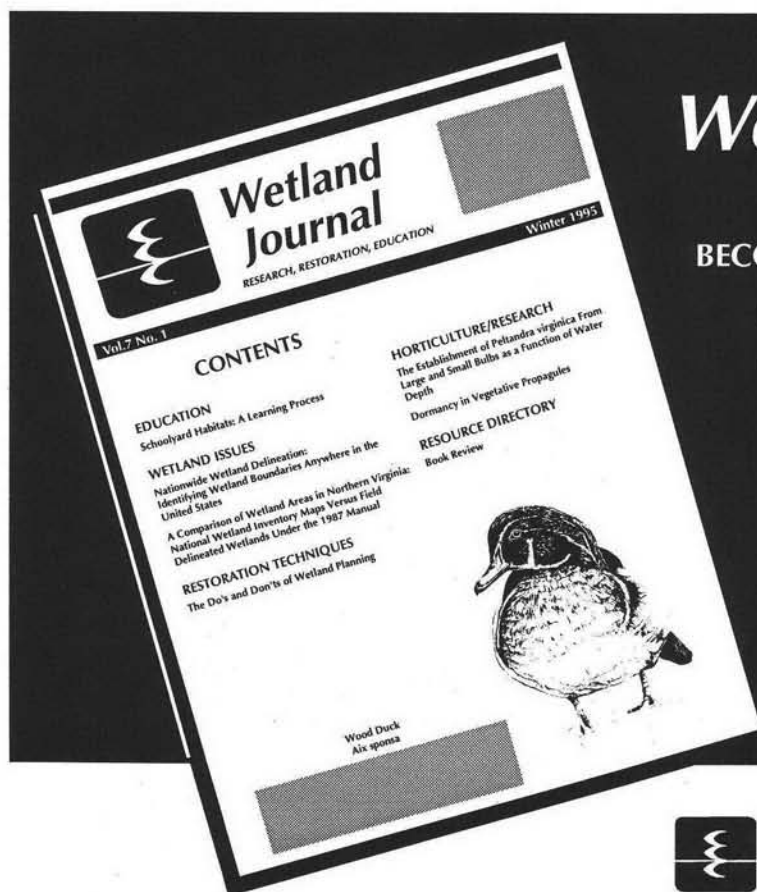
"An inspired, exquisite syllabus of hope."—Paul Hawken, author of *The Ecology of Commerce*

\$25.00 hardcover

INDEPENDENT PUBLISHING SINCE 1854  
25 BEACON STREET / BOSTON, MA 02108



BEACON



Environmental Concern Inc.

## Wetland Journal

### BECOME A 1995 ANNUAL MEMBER!

Receive all four 1995 issues, featuring:

- *Wetland Education*
- *Wetland Issues*
- *Wetland Resources*
- *Wetland Soils*
- *Dynamics of Wetlands*
- *Horticulture/Research*
- *Restoration Techniques*

#### MEMBERSHIP BENEFITS

Send your \$30.00 tax-deductible check, payable to Environmental Concern Inc.

Visa and Mastercard accepted.



Environmental Concern Inc.

P.O. Box P, Dept. RMN St. Michaels, MD 21663  
(410) 745-9620 or FAX (410) 745-3517

# Restoring Our Forests

## Forest Dreams, Forest Nightmares

*The Paradox of Old Growth in the Inland West*

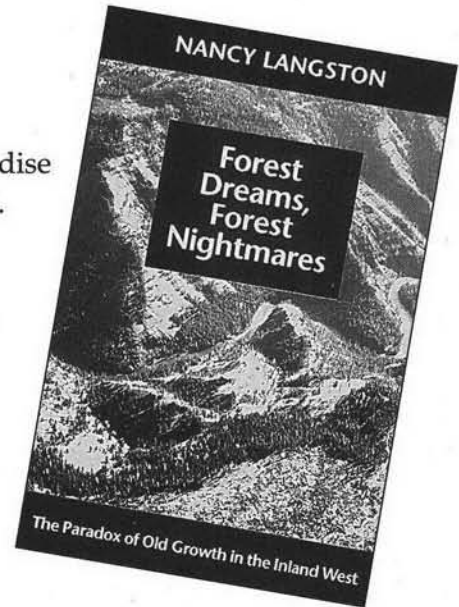
Nancy Langston

*Foreword by William Cronon*

Across the inland West, forests that once seemed like paradise are now threatened by fires, insect epidemics, and disease. Focusing on the Blue Mountains of northeastern Oregon and southeastern Washington, ecologist Nancy Langston unravels the disturbing history of what went wrong with the western forests, despite the best intentions of those involved.

"Unburdened by ideology, armed with science, and blessed with an abundance of common sense and uncommon literary skill, Langston leads us unerringly to an intelligent understanding of what the forest is to us—and we to it."—T. H. Watkins, editor of *Wilderness* magazine

A Weyerhaeuser Environmental Book  
Clothbound, \$24.95



## Urban Forest Landscapes

*Integrating Multidisciplinary Perspectives*

*Edited by Gordon A. Bradley*

With contributions by twenty specialists, this volume presents a critical look at the current state of knowledge and research in the field of urban forestry.

Clothbound, \$40.00  
Paperback, \$20.00

Available from your local bookstore or call 1-800-441-4115



UNIVERSITY OF WASHINGTON PRESS

P.O. Box 50096, Seattle, WA 98145-5096

## Natural Science Conservation Biology Books

Also  
Domestic & Foreign  
Field Guides



Patricia Ledlie Bookseller, Inc.

One Bean Road  
Post Office Box 90  
Buckfield, Maine 04220  
Phone/Fax (207) 336-2778

Free Catalogues • Telephone Inquiries Welcomed

## Restoration & Management Notes

Editor:  
Dr. William R. Jordan III

Published: 2 / yr.  
ISSN: 0733-0707

... the first and major journal in field of restoration ecology. Restoration and management of prairies, forests, wetlands and other plant and animal communities. Edited at the University of Wisconsin Arboretum. **Founded 1982.**

### Rates:

Individuals: \$22 / yr.  
(must prepay)  
Institutions: \$60 / yr.  
Foreign postage: \$ 8 / yr.  
Airmail: \$11 / yr.

We accept MasterCard  
and VISA. Canadian  
customers please remit  
7% Goods and Serv-  
ices Tax.

Please write for a free back issue list:  
**Journal Division, University of Wisconsin Press,**  
114 North Murray Street, Madison, WI 53715 USA  
Or call, 608-262-4952, FAX 608-265-5277

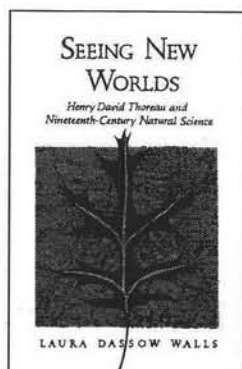
## THE SCIENCE OF THOREAU

### SEEING NEW WORLDS

Henry David Thoreau and  
Nineteenth-Century  
Natural Science

LAURA DASSOW WALLS

The first book to consider Thoreau as a serious and committed scientist, *Seeing New Worlds* changes our understanding of this major American literary figure and of the place of science in our culture. Walls shows how, just when literature and science were splitting into the "two cultures" we know today, Thoreau was attempting to heal the growing rift. paper \$22.95, cloth \$42.00



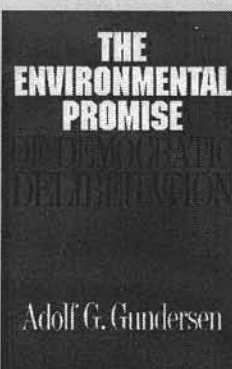
## THE PROMISE OF DEMOCRACY

### THE ENVIRONMENTAL PROMISE OF DEMOCRATIC DELIBERATION

ADOLF G. GUNDERSEN

The environmental crisis, Gundersen suggests, is political rather than moral, and he proposes an expansion of citizen deliberation as our best hope for addressing our environmental ills. Through

interviews with a broad range of citizens, he shows us how public deliberation can teach us to think more intelligently—and more collectively—about an issue that demands collective action. paper \$19.95, cloth \$45.50



**THE UNIVERSITY OF WISCONSIN PRESS** 114 N. Murray St., Madison, WI 53715 (800)829-9559 fax: (608)262-7560



## Effective, Ecological, Smart Erosion Control

Nature's own products for streambank stabilization, shoreline protection and habitat improvement

**Let plants do all the work for you.**

Creative Habitat Corporation sells the successful FIBER SCHINE™ System of Coir-based products used in erosion control. For more information about erosion control blankets, pillows & logs, call:

Creative Habitat  
Corporation



914-948-4389  
253 Old Tarrytown Road, White Plains, NY 10603

## Louis Berger & Associates, Inc.



Environmental and Engineering Consultants Since 1953

*"American Consulting Engineers Council  
National Excellence Award Winner-  
Wetland Design"*

- ✳ Environmental Impact Studies
- ✳ Wetland Design and Restoration
- ✳ Landscape Specification
- ✳ Habitat Management Plan
- ✳ Endangered Species Surveys
- ✳ Aquatic Ecology Studies

**For more information or a brochure please  
contact: Mark Renna 201-678-1960 ext. 485**

Headquarters: 100 Halsted Street, East Orange, NJ 07019

Offices in: Arizona, Connecticut, District of Columbia, Illinois, Iowa, Louisiana, Maryland, Massachusetts, Mississippi, Nevada, New York, New Mexico, North Carolina, Pennsylvania, Rhode Island, Virginia, Washington, West Virginia



*Building a*

*Bridge Between*

*Natural Sciences,*

*Engineering and*

*Landscape*

*Architecture to*

*Create and Restore*

*Streams, Lakes,*

*and Wetlands.*

## INTER•FLUVE, INC.

Streams, Lakes & Wetlands • Design, Construction & Restoration

- RIVER CHANNEL RESTORATION
- STREAM BANK & SLOPE STABILIZATION
- BIOENGINEERING ALTERNATIVES
- FISHERIES ENHANCEMENT
- WETLAND RESTORATION & CREATION
- LAKE & POND DESIGN & RESTORATION

### PROVIDING AWARD WINNING SERVICES FOR:

- ENGINEERS
- LANDSCAPE ARCHITECTS
- LAND PLANNERS & DEVELOPERS
- ENVIRONMENTAL REMEDIATION
- STATE, LOCAL AND FEDERAL AGENCIES

**P**roviding cutting edge technology, our multi-disciplinary staff of experts delivers timely and innovative solutions throughout the U.S. and Internationally.

**Please call  
or write to:**

25 N. Willson Ave, Ste 5,  
Bozeman, MT 59715  
406-586-6926 FAX: 406-586-8445

1020 Wasco St, Ste I,  
Hood River, OR 97031  
503-386-9003 FAX: 503-386-9241

RESTORATION EXCELLENCE SINCE 1983



Conserve Water & Chemicals

★ TOPGUN

PVP



★ PLAINS

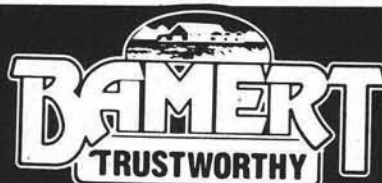
Treated or Dehulled



Low Maintenance

★ TEXOKA

We also produce many other native grass seed.

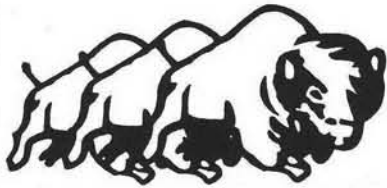


**BAMERT SEED CO.**

Route 3, Box 1120 Muleshoe, TX 79347  
1-800-262-9892 806-272-5506



# Habitat Planters



**truax** COMPANY, INC.

3609 Vera Cruz Ave. • Minneapolis, MN 55422 • (612) 537-6639

- *native grass & wildflower planters*
- *no-till interseeders*
- *tree seed planters*

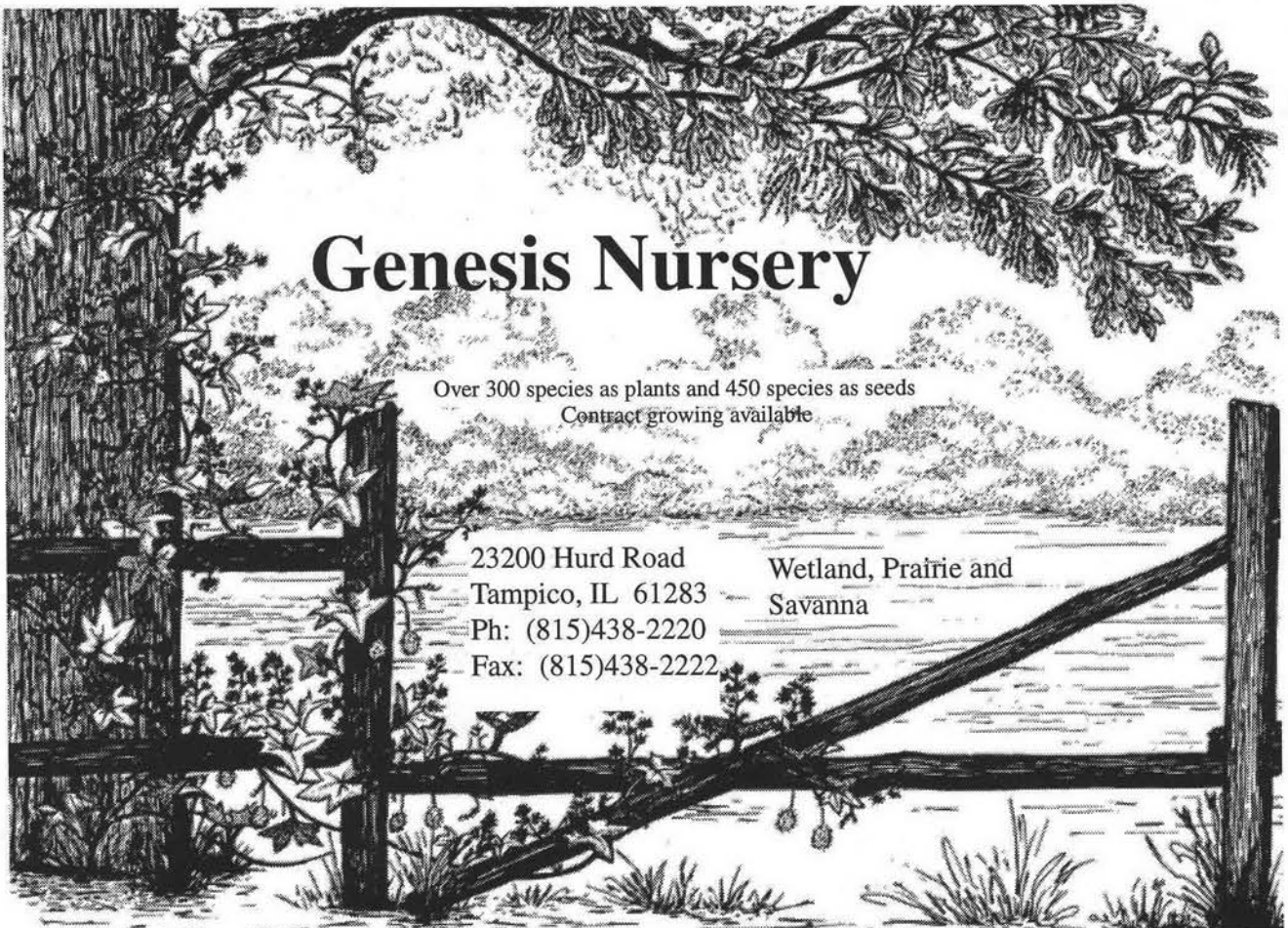
**Designers and Manufacturers of the TRUAX NATIVE GRASS DRILL**

## Genesis Nursery

Over 300 species as plants and 450 species as seeds  
Contract growing available

23200 Hurd Road  
Tampico, IL 61283  
Ph: (815)438-2220  
Fax: (815)438-2222

Wetland, Prairie and  
Savanna



# S&S SEEDS

Specializing in top quality seeds,  
site-specific custom collecting, and an  
extensive inventory for fast delivery.

## SEED SPECIES

Over 900 species available in stock:

- ♦ Wildflowers
- ♦ Native Plants
- ♦ Drought-Tolerant Plants
- ♦ Reclamation Grasses
- ♦ Ground Covers
- ♦ Seed Mixes
- ♦ Erosion Control
- ♦ Revegetation

## EROSION CONTROL PRODUCTS

- ♦ Ecology Controls M-Binder
- ♦ DSS-40 Acrylic Polymer
- ♦ Soil Guard™ Bonded Fiber Matrix

Call or Fax for Prices and Availability

P.O. BOX 1275  
CARPINTERIA, CA 93014-1275  
PHONE: 805-684-0436  
FAX: 805-684-2798

*Melica imperfecta*

# Roadsides Wetlands Wildlife Reclamation



R.D.5, Box 806 Meadville PA 16335  
1-800-873-3321 • Fax: 1-814-425-2228



# Frosty Hollow Ecological Restoration




*Project Planning & Design  
Pioneers In Plant Salvage*

## PACIFIC NORTHWEST NATIVE SEEDS

- ♦ Contract Collection
- ♦ Preliminary Site Surveys
- ♦ Site Specific Seed Collection
- ♦ Scoping Reports & Estimates

Steve Erickson & Marianne Edain  
Box 53 Langley, WA USA 98260  
(360) 579-2332 / 579-6456 Message/fax)

# Wetland Permitting and Restoration

-  Mitigation Design and Monitoring
-  Section 404 of the Clean Water Act
-  Section 10 of the Rivers and Harbors Act
-  Section 7 of the Endangered Species Act
-  National Environmental Policy Act

GLENN LUKOS ASSOCIATES

Regulatory Services



23441 South Pointe Dr. ■ Suite 150 ■ Laguna Hills, CA 92653  
Telephone: (714) 837-0404 ■ Facsimile: (714) 837-5834

**Project Mitigation Plans  
and Permits**

**Resource Management Plans**

**Erosion Control Plans**

**Custom Seed Collection and  
Plant Propagation**

**Preservation and Propagation of  
Endangered Plant Species**

**Plant and Irrigation Installation**

**Project Nursery Design**

**Mitigation Maintenance  
and Monitoring**

# LSA

## **ECOLOGICAL RESTORATION**

**LSA Associates, Inc.**

157 Park Place  
Pt. Richmond, CA 94801  
510 236 6810

1 Park Place, Suite 500  
Irvine, CA 92714  
714 553 0666

3403 10th Street, Suite 520  
Riverside, CA 92501  
714 781 9310

2485 Natomas Park Drive #250  
Sacramento, CA 95833  
916 920 1265



### **Prairie Restorations, Inc.**

- Reconstructions modeled after natural plant communities.
- Planning, specification writing, materials, construction services, management and management planning.
- We strive for excellence and authenticity in our projects.

For further information  
please write or call:

**Prairie Restorations, Inc.**  
P.O. Box 327  
Princeton, Minnesota 55371  
(612)-389-4342



# TREE OF LIFE

## **N U R S E R Y**

33201 Ortega Highway  
P.O. Box 736  
San Juan Capistrano, CA 92693

**Tel. (714) 728-0685**  
**Fax (714) 728-0509**

### ***Growers of Fine California Native Plants***

- Ecological restoration • Revegetation • Contract growing • Authentic landscapes • Site specific provenance • Mycorrhizal plant program • Rare & endangered species recovery

**PLANTS OF  
EL CAMINO REAL**



## Western Native Seed

**SPECIALIZING** in native plant seed for the Western Great Plains and the Rocky Mountain Bioregion. Quality, source identified seed at reasonable prices. Many difficult to locate species available including:

Wetlands and Riparian Species  
Native Wildflowers and Forbs  
Grasses, Shrub and Tree Seed

Call or FAX for a current seedlist.

### **WESTERN NATIVE SEED**

P.O. Box 1463-R, Salida, Colorado 81201  
(719) 539-1071 FAX (719) 539-6755

## Country Wetlands Nursery & Consulting Ltd.

- \* Wetland, woodland and prairie restoration installation, management and enhancement
- \* Provision of native seed and plant materials
- \* Certified wetland delineation and assessment, and site evaluations
- \* Seed bank analysis

We work with ecologists, engineers, administrative agency representatives and environmental advocates to create cost-effective and functional landscapes.

Country Wetlands Nursery  
& Consulting Ltd.  
S75 W20755 Field Dr.  
P.O. Box 337  
Muskego, WI 53150  
414-679-1268  
FAX 414-679-1279

## INTRODUCING

### ***MycorTree***<sup>™</sup>

#### **MYCORRHIZAL ROOT DIP**

*25 years of USDA research proves  
that mycorrhizae improves:*

Stem and root growth  
Survival rate  
Disease resistance  
Drought tolerance

*Formulas for 99% of  
all trees and shrubs.*

Call today for information on ***MycorTree***<sup>™</sup>  
and **TREE PRO** Tree Protectors.

**800-875-8071**

### **TREE PRO**

3180 W 250 N  
W. Lafayette, IN 47906

## BESTMANN GREEN SYSTEMS, INC.

**Bioengineering for erosion  
control, water quality,  
and habitat restoration.**

#### **CONSULTING**

Bioengineering design team with over two decades of experience.

#### **MATERIALS**

Coconut fiber products designed and proven for streambank and lakeshore erosion control and habitat restoration.

#### **NATIVE WETLAND NURSERY**

Offering plants for bioengineering applications.



53 Mason Street  
Salem, MA 01970  
Tel: 508/741-1166  
Fax: 508/741-3780

We invite collaboration  
with planners, engineers,  
and other professionals.  
Please contact us for  
literature on our products  
and services.



## MEAD & HUNT

Environmental Services

*"Applied Conservation Biology  
For A Better Environment"*

Wetland restoration  
Endangered resources surveys  
Wildlife surveys & management plans  
Water quality & fisheries studies  
Environmental planning & analyses



A division of the Redwood City Seed Co.,  
P.O. Box 609, Redwood City, Ca. 94064

**Craig C. Dremann**

**Tel (415) 325-7333**

**Fax (415) 321-8333**

**Mine tailings? Desert soils?  
No "A" horizon?**

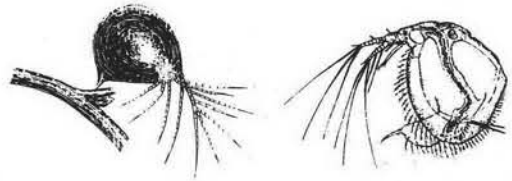
*"We thrive on revegetation cases  
that others deem hopeless™"*

**Decomposed granite, serpentine  
and roadcuts my specialty!**

The Reveg Edge™ uses local  
native grass ecotypes for  
successful revegetation.

**Systematic methods since 1971.**

## Munro Ecological Services, Inc.



Full range of wetland services  
20+ years, Eastern US regional experience  
Ecological restoration design  
Reedbed water filter system design  
Stabilization with vegetation and bioengineering  
Terrestrial and waterways consulting  
Professional certification, ESA, SWS  
Specialized salvage and restoration accessories  
PA native seeds, wetland mixes, and plants

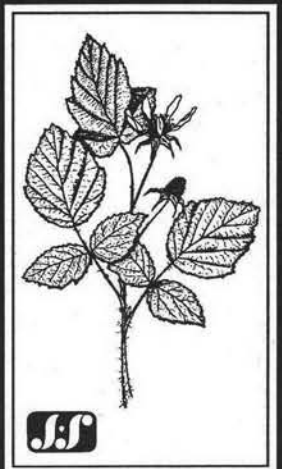
**990 OLD SUMNEYTOWN PIKE  
HARLEYSVILLE, PA. 19438-1215**

**PHONE 610-287-0671 FAX 610-287-0672**

## Jones & Stokes Associates

*Environmental Planning and  
Natural Resource Sciences*

- ◆ Stream and Wetland Restoration
- ◆ Native Habitat Revegetation
- ◆ CAD/GIS Services
- ◆ Environmental Impact Studies
- ◆ Mitigation Plans and Specifications



2600 V Street  
Sacramento, California 95818 • 916/737-3000

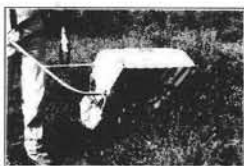
Bellevue, Washington  
206/822-1077

Phoenix, Arizona  
602/241-8566

Irvine, California  
714/260-1080

## Portable Seed Strippers

- Collect your own seed for restoration & landscaping
- grasses, wildflowers, shrubs & wetland plants to 6' high
- ideal for roadsides, ecological areas & nursery plots
- low impact, portable, durable & inexpensive
- in use across North America & Australia



18" Wide Hand Held Model



4' Wide Pull Type Model

## PRAIRIE HABITATS

Box 1, Argyle, MB Canada ROC OBO  
Phone (204)467-9371 Fax (204)467-5004

*"Giving Nature  
A Helping Hand"*



**Spence Nursery, Inc.**

Landscaping &

- **Plants for Prairie, Sedge Meadow & Emergent Communities**
- Truax Native Grass & Wildflower Drill Services
- Consultation & Design
- Wetland Restorations
- Erosion Control
- Hydro-Seeding

*P.O. Box 546*

*Muncie, IN 47308*

*Nursery Location: 2220 E. Fuson Rd.*

*Phone (317) 286-1740*

*FAX (317) 286-0264*

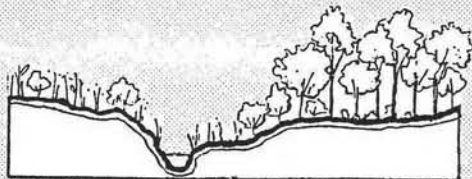


## SYLVA NATIVE

*Nursery & Seed Company*

*Offering a wide selection of native trees,  
shrubs, and wildflowers of the Northeast and  
mid-Atlantic States for:*

- Reforestation
- Wetland mitigation
- Mine reclamation
- Streambank and riparian restoration



*Please contact us for a plant list*

*R.D. #2, Box 1033*

*New Freedom, PA 17349*

*(717) 227-0486 • Fax (717) 227-0484*

## F.W. SCHUMACHER CO., INC.



SEEDS for the nurseryman and forester. Ask for our free catalog of seed items.

F.W. SCHUMACHER CO., INC.  
HORTICULTURIST

Sandwich, MA 02563-1023  
(508) 888-0659 Fax (508) 833-0322



**CIRCUIT RIDER PRODUCTIONS, INC.**  
*Native Plant Nursery*

- ☐ Dedicated exclusively to growing California native plants
- ☐ Site specific seed collection
- ☐ Salt and fresh water marsh plants
- ☐ Mitigation plans, planting, maintenance and monitoring services also available

9619 Old Redwood Highway  
Windsor, CA 95492  
(707) 838-6641  
FAX 838-4503



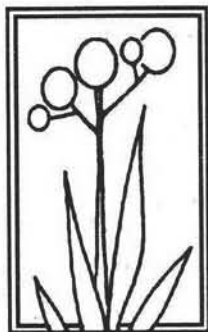
## ION EXCHANGE

- Prairies & Wetlands
- Native Seed & Plants



**Howard & Donna Bright**

1878 Old Mission Drive  
Harpers Ferry, IA 52146  
Ph: (319) 535-7231  
Fax: (319) 535-7362  
800 291-2143



RESTORATION

DESIGN AND  
MASTERPLANNING

BOTANICAL  
INVENTORY

## NATIVE LANDSCAPE

DESIGN AND RESTORATION, LTD.

C. Colston Burrell, President  
407 Second Street N.E., Minneapolis, MN 55413  
(612) 379-3106

*"Environmentally Appropriate  
Design for People and Plants"*

PRAIRIE SPECIES

## Successful revegetation or restoration starts with quality native seed

Call the  
**North Coast Seed Bank**

A regional source for wetland &  
riparian native seed/plants

**\*Offering Wildland Seed\***

- Site specific collection
- Good inventory on hand



5851 Myrtle Avenue  
Eureka, California 95503  
(800) 200-8969

Run your (horizontal) business card and reach the most influential people in the field. Black/white preferred. Cards with colored paper or ink will be made into contact prints for an additional charge. Do not staple, paper clip or write on card. **Rate: \$70 per insertion.** A 10% discount given for four consecutive insertions. Summer '96 issue closes April 15 and will be mailed July 1996. Send order to: **Restoration & Management Notes, University of Wisconsin Press, 114 N. Murray Street, Madison, WI 53715.** Phone: 608/262-5839. Fax: 608/265-5277. Please call for quarter page or larger size ad rates.

## EAST

### B & C ASSOCIATES INC.

ENVIRONMENTAL CONSULTANTS

SPECIALISTS IN

- WETLAND DELINEATIONS
- WILDLIFE EVALUATIONS
- WETLAND REPLICATIONS

DAVID CROSSMAN  
508/568-0135

2 RICE ST.  
HUDSON, MA 01749

Wholesale - Natural Landscape Design - Restoration

### ARROWWOOD NURSERY INC.



"Growers of Native Plants"

870 W Malaga Road  
Williamstown, NJ 08094

Joe & Cathy Arsenault  
Ted & Dawn Sowers

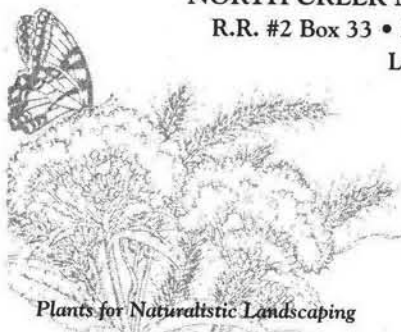
Office 609-697-6044  
Fax 609-697-6050  
Nursery 609-875-4889

### NORTH CREEK NURSERIES, INC.

R.R. #2 Box 33 • 33 North Creek Road  
Landenberg, PA 19350

C. Dale Hendricks

(610) 255-0100  
Fax (610) 255-4762



### SCHMID & COMPANY INC. CONSULTING ECOLOGISTS

Wetland Mapping  
Mitigation Analysis  
Site Planning  
Habitat Restoration

Permit Coordination  
Environmental Inventory  
Impact Statements  
Expert Testimony

James A. Schmid, Ph.D.  
Certified Senior Ecologist (ESA)  
President

1201 Cedar Grove Road  
Media, Pennsylvania 19063

610-356-1416  
FAX 610-356-3629

Growers of Quality Nursery Stock for 35 Years

### SEEDLINGS AND TRANSPLANTS



NOW SUPPLYING PLANT MATERIAL  
TO OVER 100 SOIL AND WATER  
CONSERVATION DISTRICTS  
WRITE OR CALL FOR CURRENT LISTINGS



### CARINO NURSERIES

P.O. BOX 558 INDIANA, PENNSYLVANIA 15701  
PHONE 1-800-225-7075



### RETTEW Associates, Inc.

5010 Ritter Road, Suite 102  
Mechanicsburg, PA 17055  
(717) 697-3551  
FAX (717) 697-6953

James G. Kooser  
Ecologist

- Rare Plant Surveys
- Natural Area Restoration
- Natural Areas Management
- Wetland Delineation & Permitting
- Wetland Mitigation, Design, Planting & Monitoring

ENGINEERS • LANDSCAPE ARCHITECTS • SURVEYORS  
PLANNERS • ENVIRONMENTAL CONSULTANTS



# JJR/

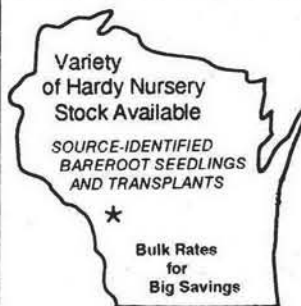
**Landscape Architecture  
Landscape Ecology  
Civil Engineering  
Environmental Services**

110 Miller  
Ann Arbor, Michigan 48104  
313 662 4457 313 662 7520 FAX

2828 Routh Street, Suite 600  
Dallas, Texas 75201  
214 871 9220 214 871 7643 FAX

30 West Monroe Street  
Suite 1010  
Chicago, Illinois 60603-2405  
312 641 0770 312 641 6728 FAX

One North Pinckney Street  
Madison, Wisconsin 53703  
608 251 1177 608 251 6147 FAX



**NURSERY & CHRISTMAS TREES**

Route 4, Box 141 • Sparta, WI 54656

**1-800-458-7275**

(608) 272-3171

FAX: (608) 272-3605



## **Bluestem Farm** *Native Wildflowers & Grasses*

*Nursery grown Wisconsin  
ecotypes available all season*

Martha Barrett  
Scott Weber

S5920 Lehman Rd.  
Baraboo, WI 53913

call for appointment

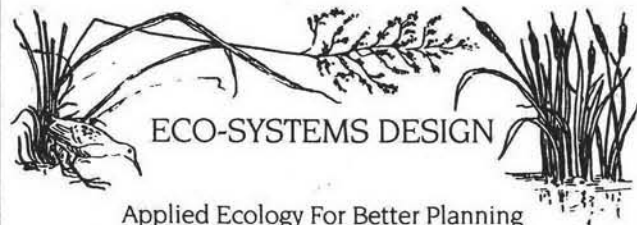
608-356-0179



**20 Years Native  
Restoration Experience...  
In Prairies, Wetlands,  
and Woodlands**

*Catalog of Available  
Plant Materials \$3.00*

9738 OVERLAND ROAD • MT. HOREB, WI 53572-2832  
608/437-5245 • FAX 608/437-8982



ECO-SYSTEMS DESIGN

Applied Ecology For Better Planning

Consulting Ecologist and Restorationist

122 Nygard Street

R. R. 1, Box 125

Madison, WI 53713-2020

Hokah, MN 55941-9715

(608) 256-4401

(507) 894-4940

## **Prairie Moon Nursery**

**Native Plants and Seeds**

**Wetland - Prairie - Woodland**

Genotypes for use in Southern

Minnesota - Wisconsin and

Northern Illinois - Iowa



Route 3 Box 163  
Winona, MN 55987  
(507) 452-1362

*Catalog & Cultural Guide \$2*



**PRESCRIBED  
FIRE  
CONSULTING**

SPECIALISTS IN ECOLOGICAL MANAGEMENT BURNING

**BOB STANTON**

3605 SPRING ROAD • OAKBROOK, ILLINOIS 60521

(708) 323-6359



**G.E.  
POGUE  
SEED CO.  
INC.**

KENEDY, TEXAS 78119

WHOLESALE DISTRIBUTORS  
GRASS AND FIELD SEEDS

GARY E. POGUE

P. O. Drawer 389

PHONE

210 - 583-3456

## PHILLIPS SEEDING and RECLAMATION, INC.

*Revegetation Specialists*  
*Seeding of Native Grasses, Forbes and Shrubs*

11843 Billings  
Lafayette, Colorado 80026  
(303) 665-2618



## inside passage

seeds and native plant services

- ✿ on-site *consultation* & design document review
- ✿ site-specific *seed harvest*
- ✿ *workshops* on aspects of native plants
- ✿ *wholesale prices* for over 150 species of northwest native plant seeds



p.o. box 639, port townsend, wa 98368 usa  
(360) 781-3575 e-mail: [inspass@whidbey.net](mailto:inspass@whidbey.net)  
forest shomer, owner

FORESTRY CONSULTING  
REFORESTATION SERVICES

TREE SEED  
CONTAINER SEEDLINGS  
TRANSPLANT SERVICE  
STYROBLOCK CONTAINERS

## SILVASEED COMPANY

SALES AND CUSTOM COLLECTION FOREST TREE SEED

MICHAEL GERDES  
VICE PRESIDENT - FORESTER

BUSINESS  
P.O. BOX 118  
ROY, WASHINGTON 98580  
PHONE (206) 843-2246  
FAX (206) 843-2239

HOME  
13007 - 75th AVE. CT. E.  
PUYALLUP, WA 98373  
PHONE (206) 536-8993



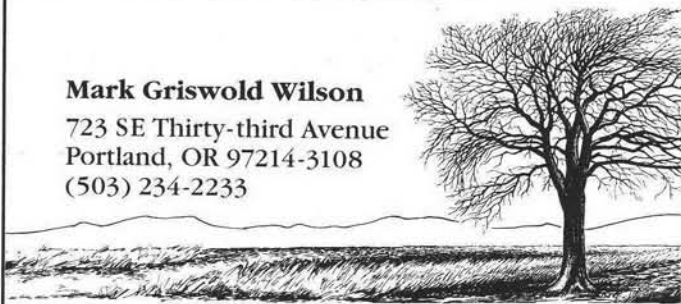
Marc Boulé, Shapiro and Associates, Inc.  
Seattle, WA 206.624.9190

Stan Geiger, SRI/Shapiro, Inc.  
Portland, OR 503.274.9000

## SHAPIRO

- Wetland creation and restoration
- Stream enhancement and bioengineering
- Lake diagnostics and restoration

Mark Griswold Wilson  
723 SE Thirty-third Avenue  
Portland, OR 97214-3108  
(503) 234-2233



*Environmental Restoration and Horticulture*

## FUGRO WEST, INC.



Biological and Wetland Studies • Environmental Impact Assessment • Habitat Restoration • Biotechnical Bank Stabilization • Water Resources • Land Use Planning • Geotechnical / Geoenvironmental Engineering • Erosion Control

Richard Meredith  
ROSEVILLE  
1050 Melody Lane, Suite 160  
Roseville, CA 95678  
(916) 782-2110

David Magne  
VENTURA  
5855 Olivas Park Drive  
Ventura, CA 93003-7672  
(805) 650-7000

954 Risa Road, Suite B  
Lafayette  
California 94596  
(510) 947 - 6888

2627 J Street  
Sacramento  
California 95816  
(916) 442 - 5620

ZENTNER   
and ZENTNER

Wetland Planning and Restoration



## Scott J. Stewart

Post Office Box 455  
Rio Vista, California 94571  
Business (916) 775-1676  
775-1646  
Mobile (916) 425-5839  
Pager (916) 954-4491

# ATTRACT WILDLIFE



## IMPROVE OUR ENVIRONMENT

Over 100 Varieties of Plants & Shrubs  
Available for Natural Landscaping

- Wetlands
- Woodlands
- Prairies
- Water Gardens
- Mini Refuge
- Reclamation Areas

For instant service & best results,  
please send \$2.00 for our 32-page illustrated catalog

**J & J TRANZPLANT AQUATIC NURSERY INC.**  
**P.O. Box 227-R&M, Wild Rose, WI 54984-0227**